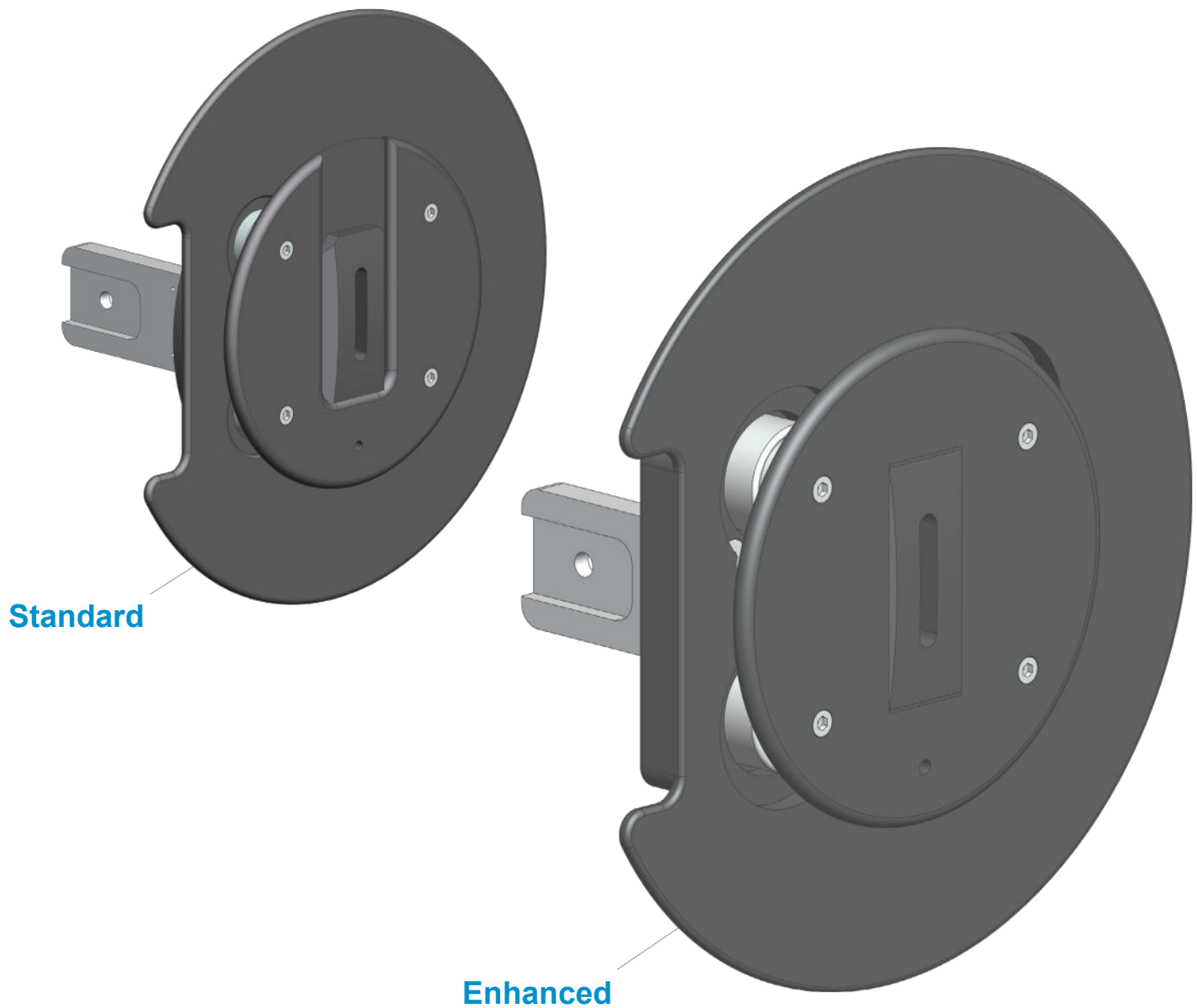


Varian® E500 Implanters

Extraction Electrodes



512.259.0320
800.621.9598



glemco.com
sales@glemco.com

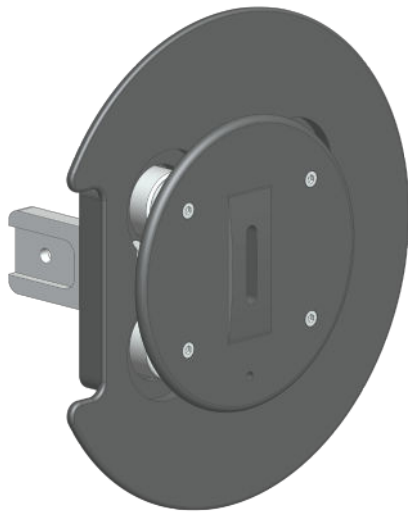


PO Box 217
Leander, TX 78646

Glemco® - Any unauthorized use and or duplication of any material from this media without express and written permission from Glemco is strictly prohibited.

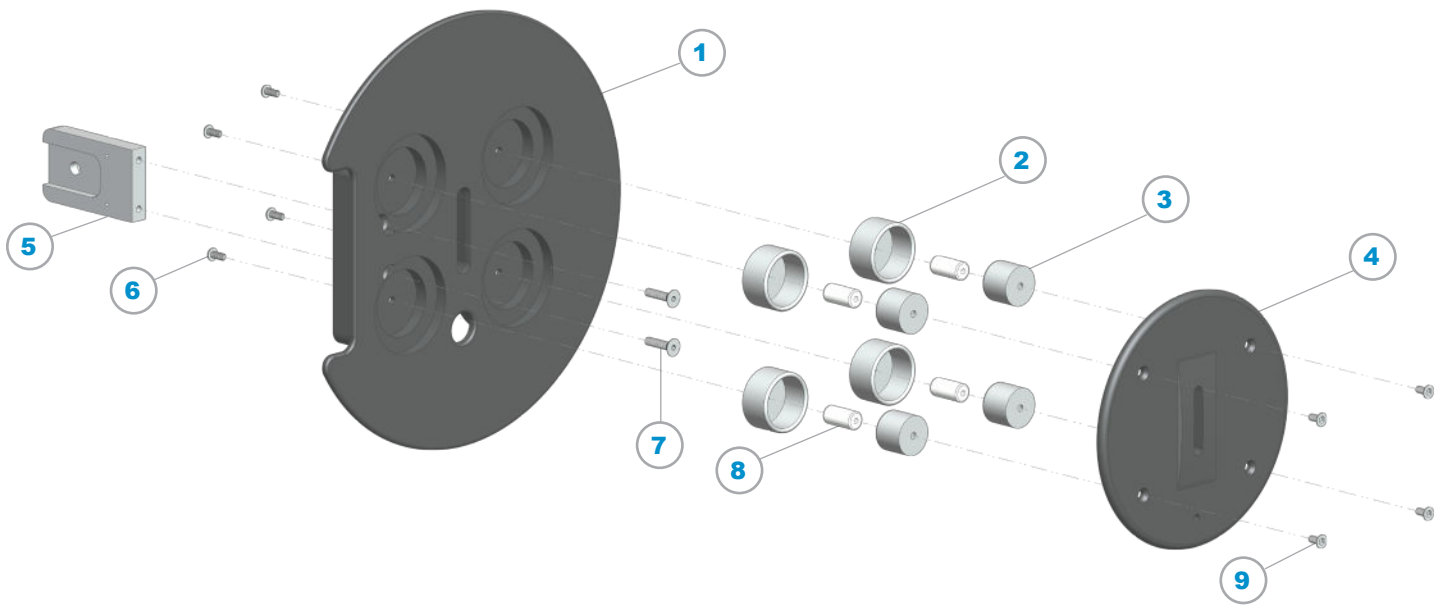
G-30-120E500 Rev 02

Enhanced Extraction Electrode



Design Benefits:

- 1pc Suppression Plate delivers precision beam optics.
- Thicker ground plate incorporates longer standoffs and shields to improve electrical isolation.

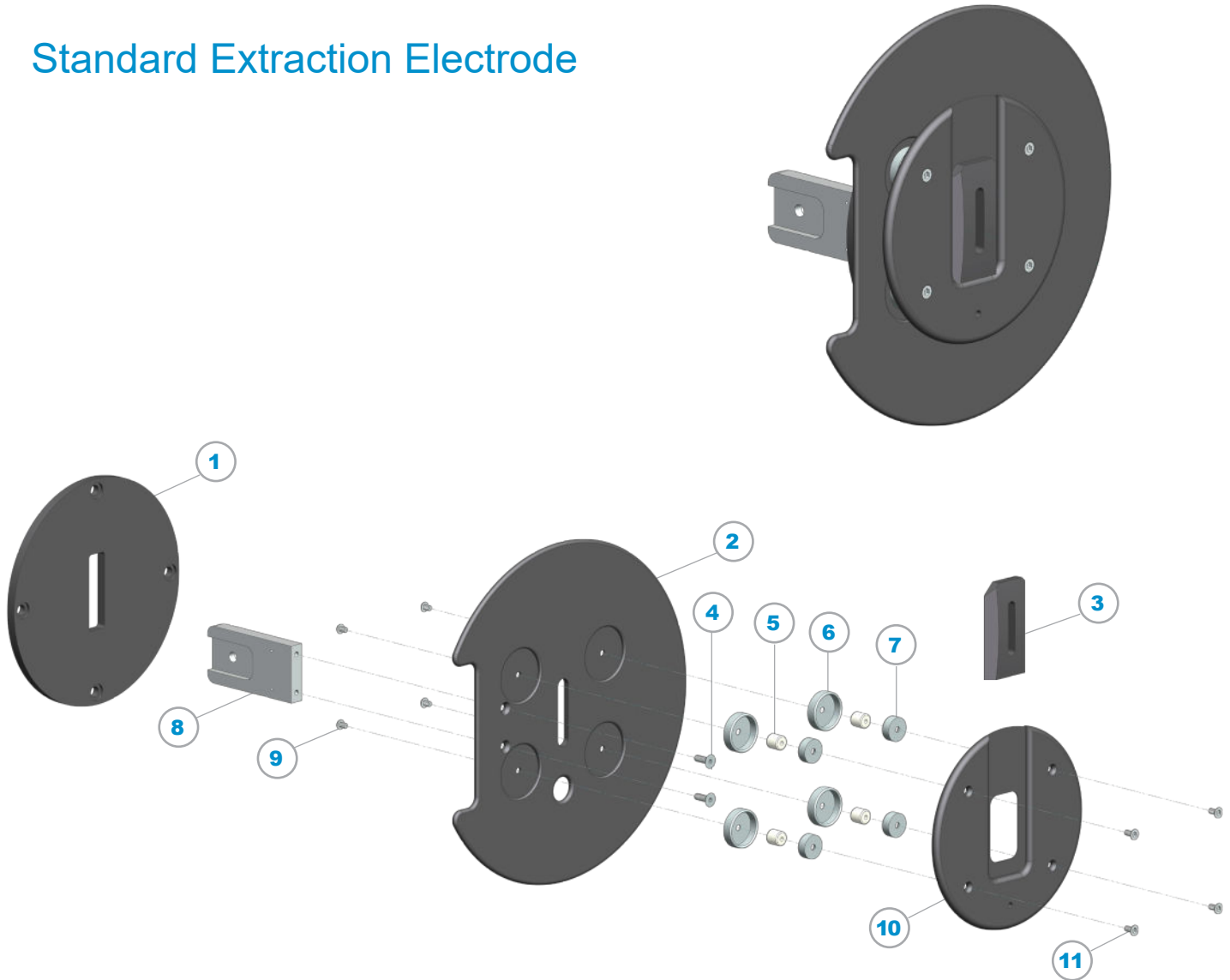


ITEM	P/N	DESCRIPTION	QTY
1	55063A	Ground Electrode, Graphite, Custom	1
2	99139A	Large Cup, SS, Extended	4
3	99138C	Small Cup, SS, Extended	4
4	55108A	Manipulator/Suppression Mounting Plate, 1pc, Graphite	1
5	55328A	Electrode Mounting Bracket, SS, Short	1
6	8A444	6-32 x 5/16", SS, BHSS, Vented	4
7	8A085	8-32 x 3/4", 82°, SS, FHS-H	2
8	30680	6-32 x 3/8" Ø x 3/4", Standoff	4
9	8A327	6-32 x 5/16", 82°, SS, FHS-H, Vented	4

K55000

Extraction Upgrade Kit, *contains all items required for a single assembly upgrade.*

Standard Extraction Electrode



ITEM	P/N	DESCRIPTION	QTY
1	55107	Exit Aperture	1
2	55063	Ground Electrode	1
3	55073	Suppression Electrode, Graphite	1
4	82589	8-32 x 1/2", 82°, SS, FHS-H	2
5	99054	6-32 x 3/8" Ø x 3/8", Ceramic, Standoff	4
6	55067	Outer Shield Cup	4
7	55066	Inner Shield Cup	4
8	55328	Electrode Mounting Bracket, SS	1
9	8A317	6-32 x 3/16", SS, BHSS, Vented	4
10	55108	Mounting Plate	1
11	8A327	6-32 x 5/16", SS, FHS-H, Vented	4

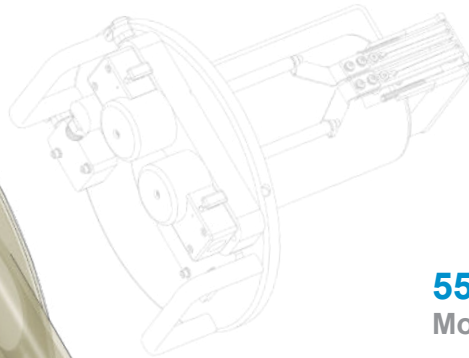
Varian® E500 Implanters

Source Flange & Shroud

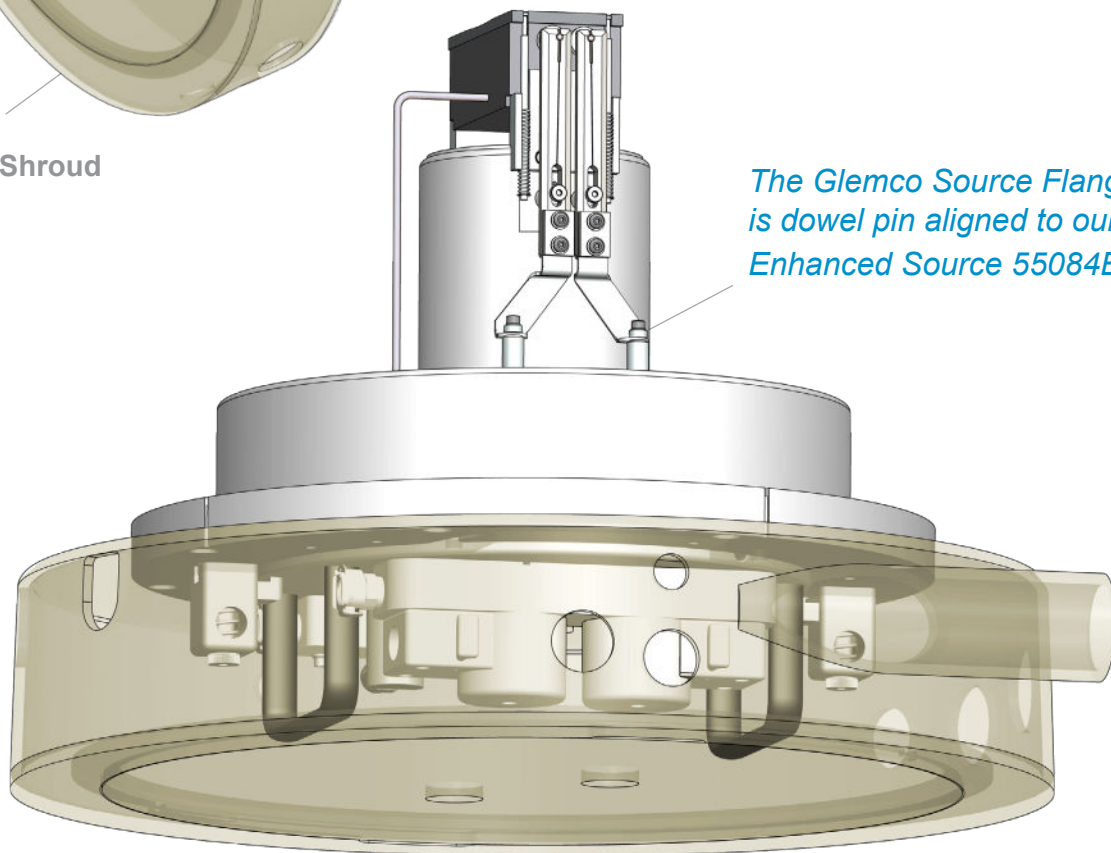
Toe clamps are used to hold the flange in place during vacuum roughing.



55329
Source Shroud



55327A
Modified Source Flange



The Glemco Source Flange is dowel pin aligned to our Enhanced Source 55084B.



512.259.0320
800.621.9598



glemco.com
sales@glemco.com

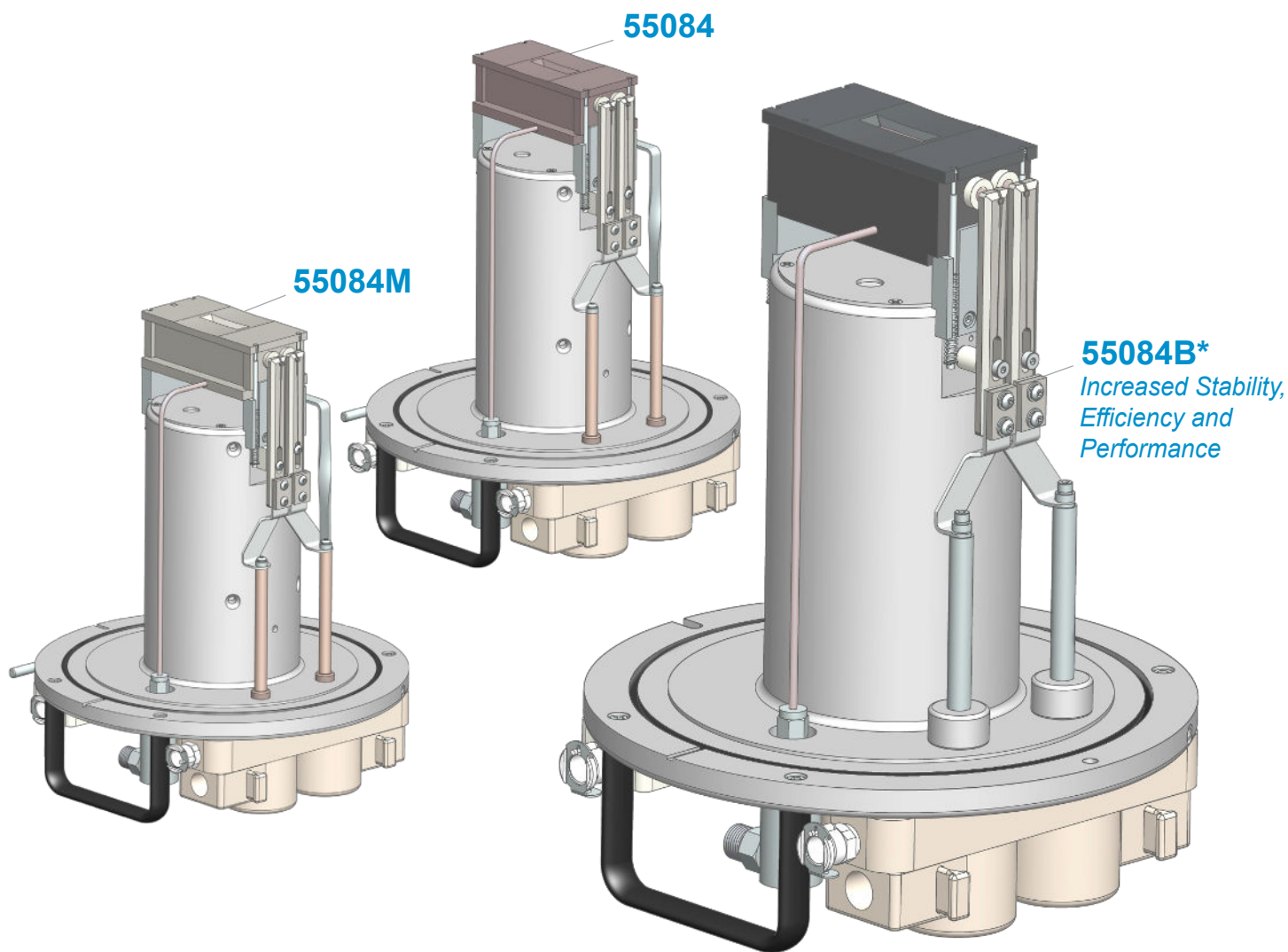


PO Box 217
Leander, TX 78646



E500 Non Vaporizer Sources

Enhanced and Standard



512.259.0320
800.621.9598



glemco.com
sales@glemco.com

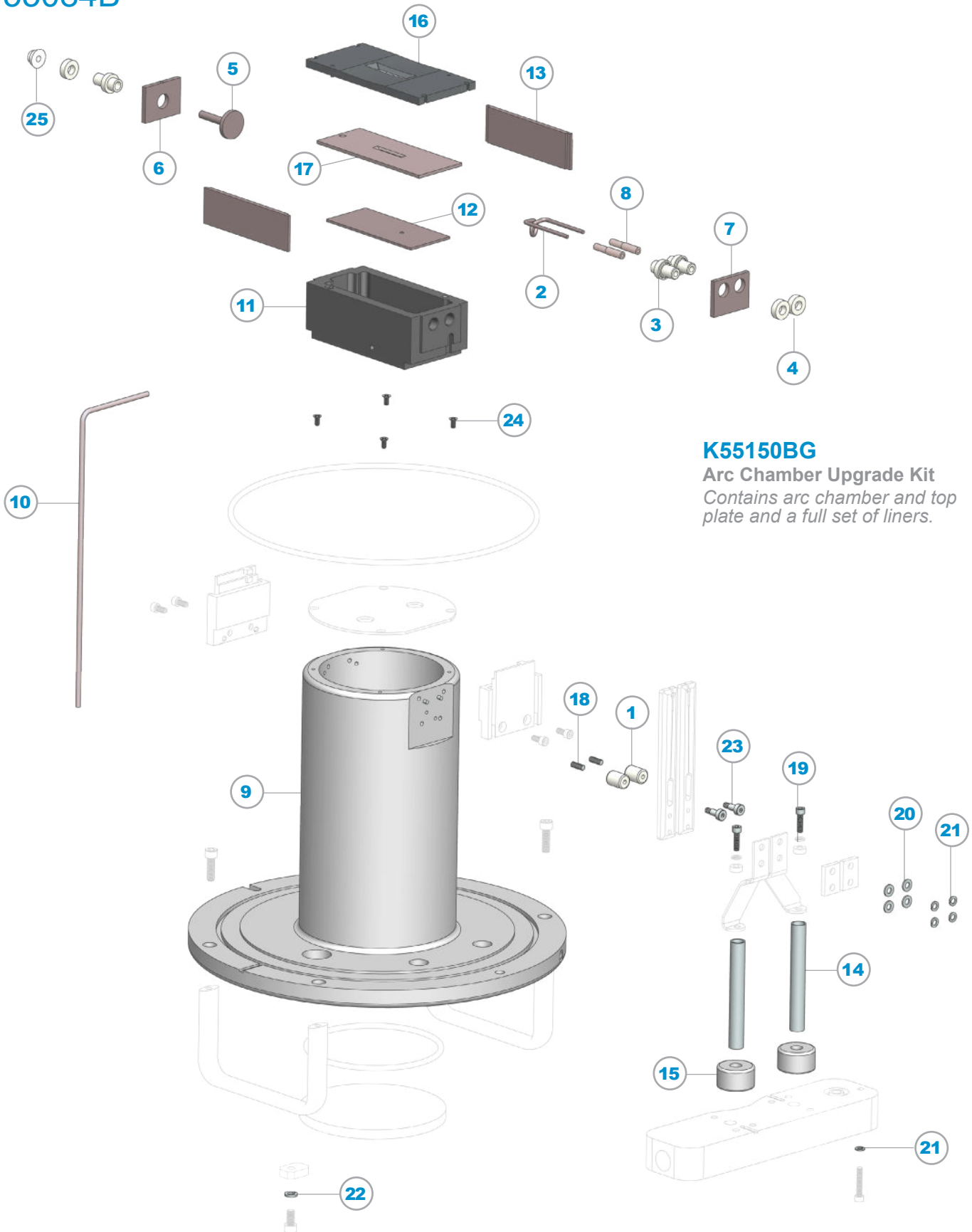


PO Box 217
Leander, TX 78646

Glemco® - Any unauthorized use and or duplication of any material from this media without express and written permission from Glemco is strictly prohibited.

G-30-100E500 Rev 09

Enhanced Source Configuration 55084B*





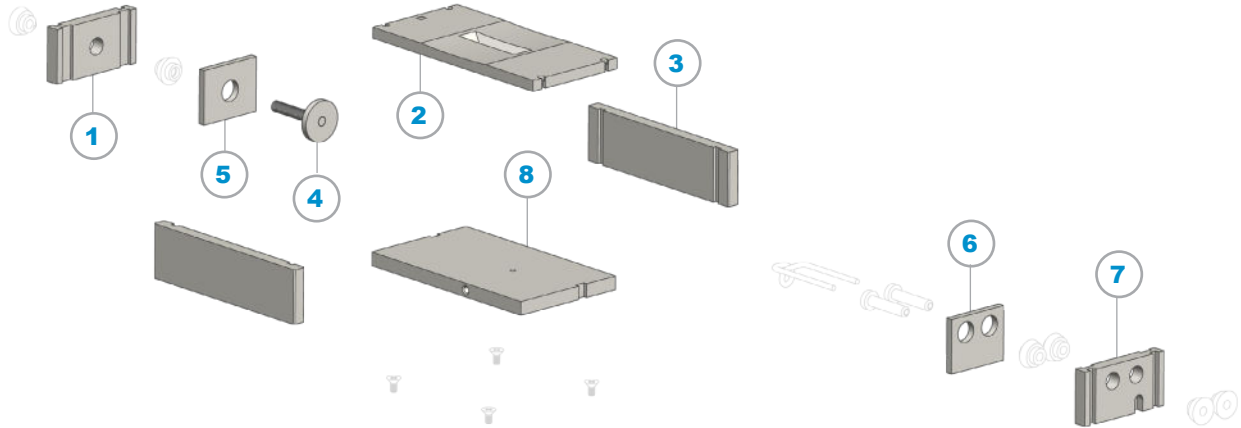
Enhanced Source Configuration 55084B*

Design Benefits:

- Increased Stability and Efficiency over OEM system.
- Consistent and repeatable by design.
- Average lifetime increase is 3x.
- Box liner system reduces gas consumption by up to 50%.
- Alignment features improve stability and repeatability.
- Vacuum tight and ready for roughing at install.
- Up to 50% gas reduction.

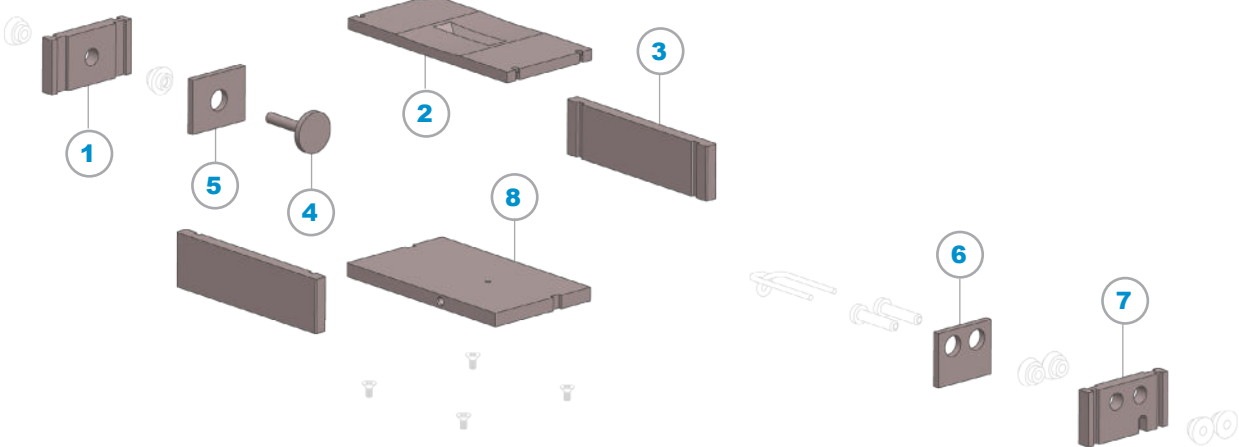
ITEM	P/N	DESCRIPTION	QTY
1	30681	6-32 x 3/8" Ø x 1/2", Ceramic Standoff	2
2	51068D	Pigtail Filament, Ø.09, W	1
3	51109A	Filament, Repeller Insulator, BN-HBC	3
4	51110	Insulator Nut	3
5	55074W	Repeller, W	1
6	55079AW	Repeller Shield, Mod, W	1
7	55080AW	Filament Shield, Mod, W	1
8	55101A	Filament Insert, Headless, Ta	2
9	55105A	Source Body, Enhanced	1
10	55109T	Gas Tube, Ta	1
11	55150BG	Arc Chamber, Graphite	1
12	55160AW	Liner, Base Plate, Mod, W	1
13	55163AW	Liner Side Plate, Mod, W	2
14	55330	Feed-Thru Shield A, Custom	2
15	55331	Filament Feed-Thru Shld Custom	2
16	55409G	Top Plate Assy, Grph W Pins	1
17	55410W	Top Plate Liner, .080" Thk, W	1
18	82118	6-32 x 3/8", SS, Set Screw	2
19	82415	6-32 x 1/2", SS, SHCS	5
20	82472	#6, .156" ID x .312" OD, SS, Washer, Flat	4
21	82606	#6, .148" ID, .250" OD, SS, Washer, Split, Lock	5
22	82608	#10, .220" ID x .334 OD, SS, Washer, Split, Lock	1
23	8B336	6-32 x 5/32" x 9/32", SS, SHSS	2
24	8B373	4-40 x 1/4", SS, FHPS	4
25	99022	Filament Insulator, Ceramic	1

Standard Source Configuration – Molybdenum 55084M



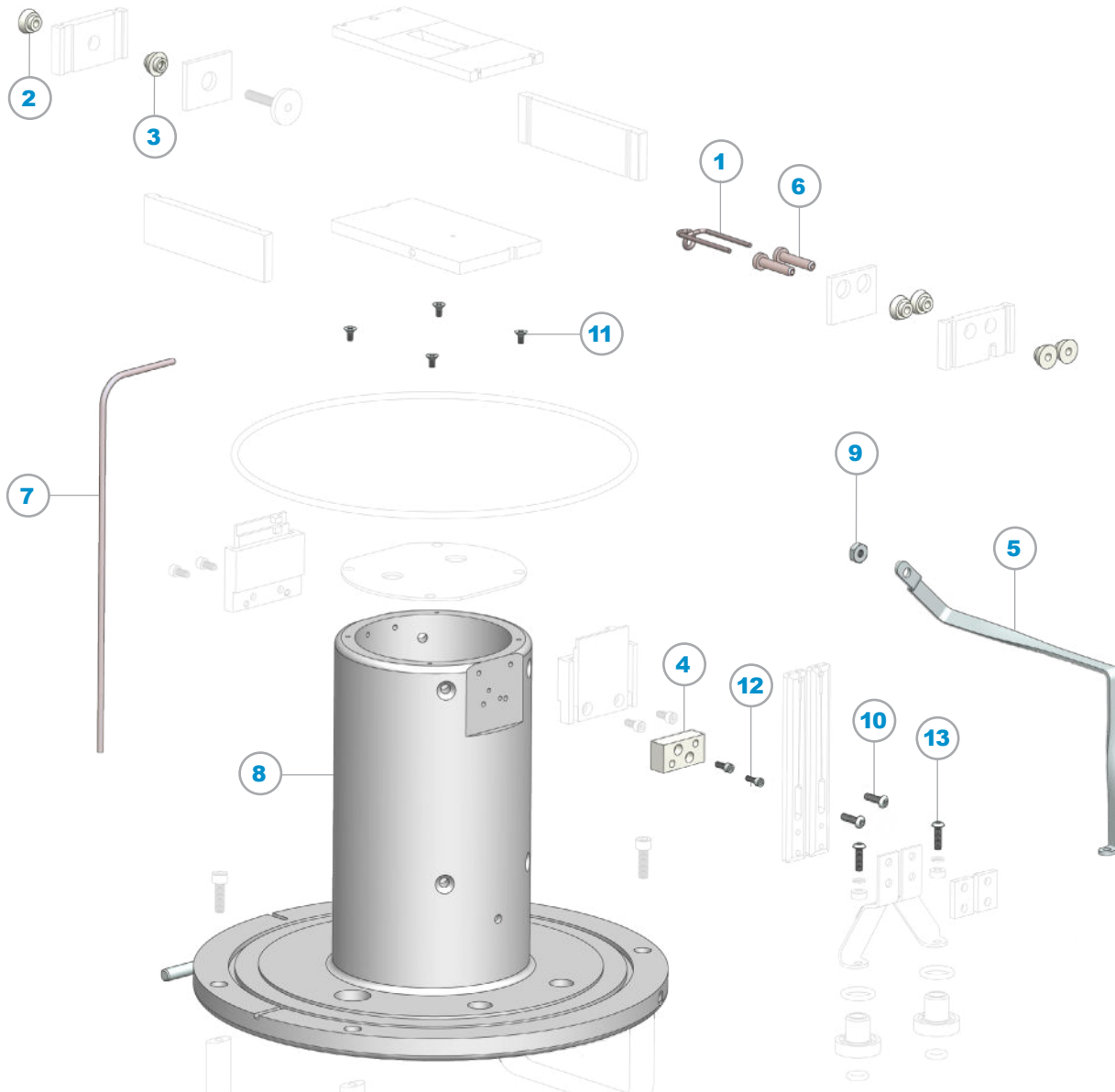
ITEM	P/N	DESCRIPTION	QTY
1	55061	Reflector End Plate, Mo	1
2	55064	Top Plate, Mo	1
3	55065	Side Plate, Mo	2
4	55074	Repeller, Mo	1
5	55079	Repeller Shield, Mo	1
6	55080	Filament Shield, Mo	1
7	55082	End Plate, Filament, Mo	1
8	55083	Base Plate, Mo	1

Standard Source Configuration – Tungsten 55084



ITEM	P/N	DESCRIPTION	QTY
1	55061W	Reflector, End Plate, W	1
2	55064W	Top Plate, W	1
3	55065W	Side Plate, W	2
4	55074W	Repeller, W	1
5	55079W	Repeller Shield, W	1
6	55080W	Filament Shield, W	1
7	55082W	End Plate, Filament, W	1
8	55083W	Base Plate, W	1

Standard Source Configuration



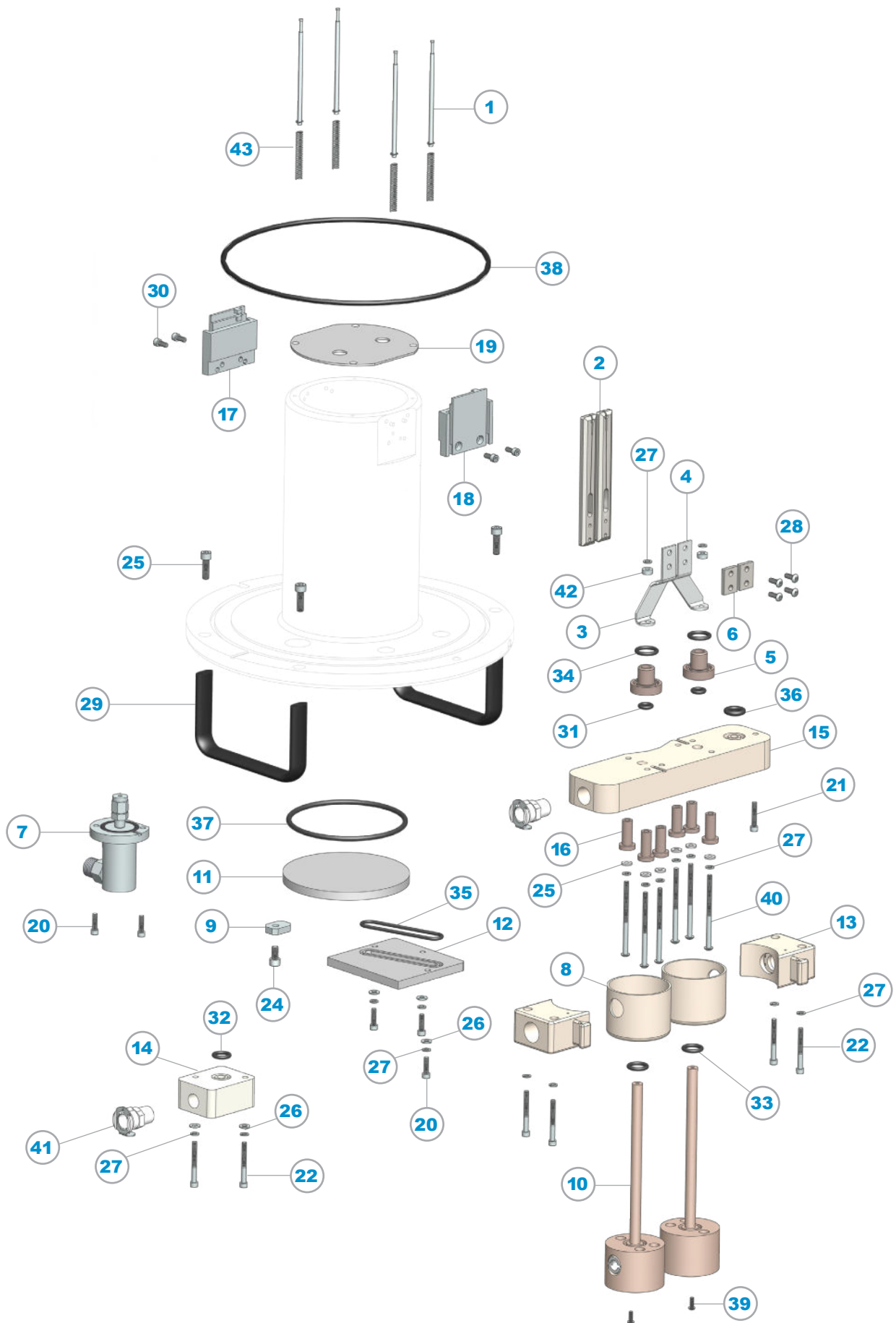
ITEM	P/N	DESCRIPTION	QTY
1	51068	Pigtail Filament, Ø.09, W	1
2	55031	Filament Insulator	3
3	55032	Filament Insulator	3
4	55033	Insulator	1
5	55075	Reflector Strap	1
6	55101	Filament Screw, Ta	2
7	55103	Gas Tube, Ta	1
8	55105	Source Body	1
9	82299	10-32 x 3/8", SS, Hex Nut	1
10	82629	6-32 x 1/2", SS, BHSS	2
11	82714	4-40 x 1/4", SS, PFHS, Vented	4
12	82717	4-40 x 5/16", SS, SHCS, Vented	2
13	8A445	6-32 x 1/2", SS, BHSS, Vented	2

Glemco® - Any unauthorized use and or duplication of any material from this media without express and written permission from Glemco is strictly prohibited.



Universal Source Components

ITEM	P/N	DESCRIPTION	QTY
1	55068A	Retaining Rod, Short	4
2	55071	Filament Clamp, Mo	2
3	55076	Filament Feed Strap, Right	1
4	55077	Filament Feed Strap, Left	1
5	55078	Feed-Thru Insulator	2
6	55081	Clamp, Filament Feed Strap	2
7	55085	Gas Manifold Assembly	1
8	55086	Feed-Thru Insulator Shield	2
9	55087	Clamp, Vaporizer Blank-Off Plt	1
10	55090	Feed-Thru	2
11	55091	Vaporizer Blank-Off Plate	1
12	55092	Source Body Water Manifold	1
13	55093	Feed-Thru Connector	2
14	55094	Sub-Block Manifold	1
15	55095	Feed-Thru Manifold	1
16	55096	Feed-Thru Insulator	6
17	55099	Mounting Bracket, Repeller	1
18	55100	Mounting Bracket, Filament	1
19	55106	Vaporizer Heat Shield	1
20	82415	6-32 x 1/2", SS, SHCS	5
21	82421	6-32 x 3/4", SS, SHCS	1
22	82424	6-32 x 1 1/4", SS, SHCS	6
23	82436	10-32 x 5/8", SS, SHCS	4
24	82439	10-32 x 3/8", SS, SHCS	1
25	82466	#6, .140" ID x .312" OD, Nylon, Washer, Flat	6
26	82472	#6, .156" ID x .312" OD, SS, Washer, Flat	5
27	82606	#6, .148" ID, .250" OD, SS, Washer, Split, Lock	17
28	82627	6-32 x 3/8", SS, BHSS	4
29	82700	Handle, Al, Black Anodized	2
30	82730	6-32 x 5/16", SS, SHCS, Vented	4
31	83009V	-109, Viton, O-Ring	2
32	83010V	-110, Viton, O-Ring	1
33	83012V	-112, Viton, O-Ring	2
34	83013V	-113, Viton, O-Ring	2
35	83031V	-131, Viton, O-Ring	1
36	83104V	-204, Viton, O-Ring	1
37	83137V	-237, Viton, O-Ring	1
38	83165V	-265, Viton, O-Ring	1
39	83627	4-40 x 5/16", Nylon, SPHS	2
40	83640	6-32 x 2-1/4", SS, PPHS	6
41	83694	1/4" Flow x 1/4" NPTM Quick Disconnect Coupling	2
42	83750	Spacer	2
43	99035	Retainer Pin, Spring	4





GSD Flange & Liner Components

Floating Clamp Ring Setup



Water and non-water cooled source flanges are available.



512.259.0320
800.621.9598



glemco.com
sales@glemco.com



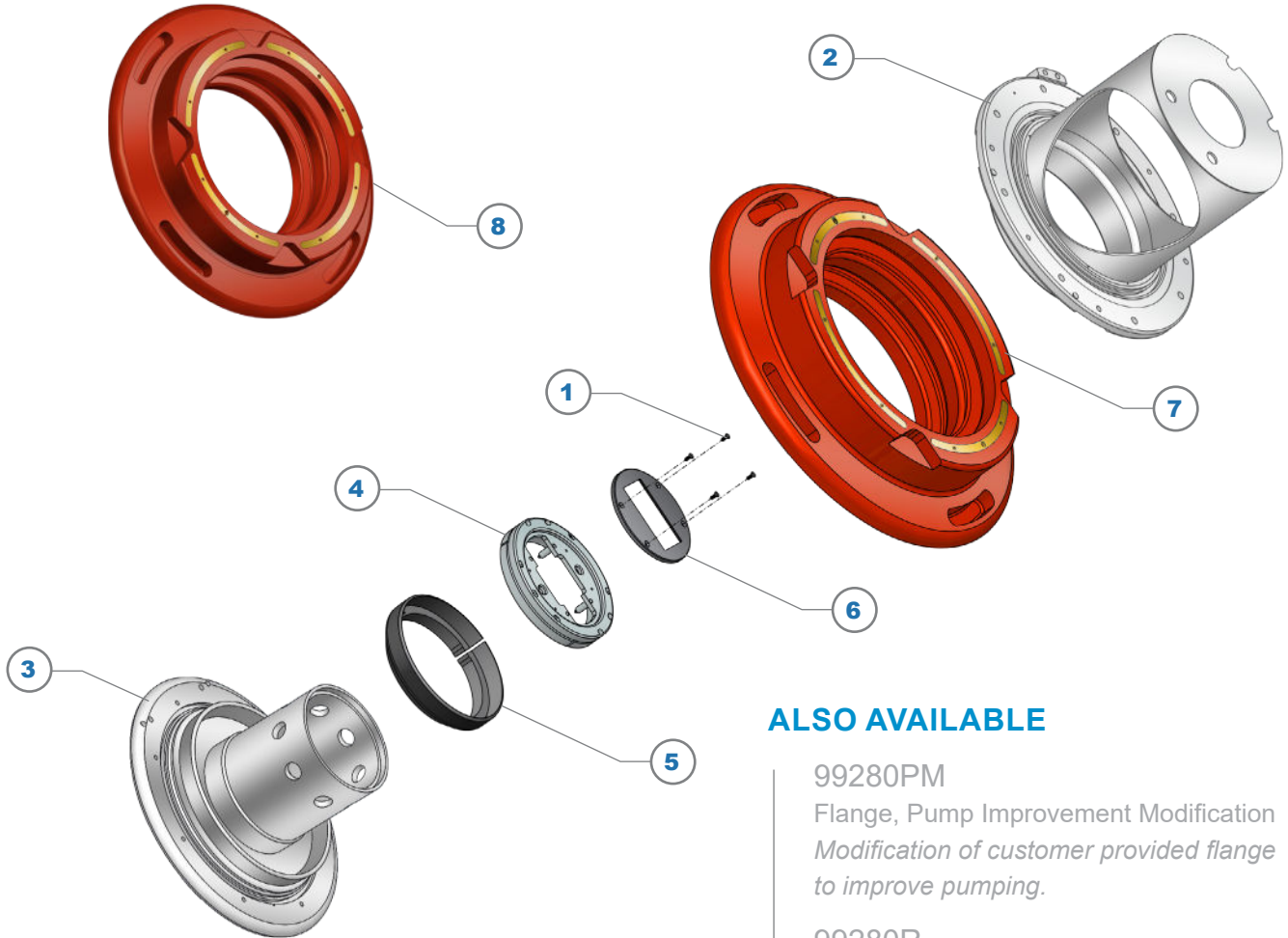
PO Box 217
Leander, TX 78646

Glemco® - Any unauthorized use and or duplication of any material from this media without express and written permission from Glemco is strictly prohibited.

G-30-110GSD Rev 01

99196 | 99280A

Water Cooled Source Liner & Flange



ALSO AVAILABLE

99280PM

Flange, Pump Improvement Modification
Modification of customer provided flange to improve pumping.

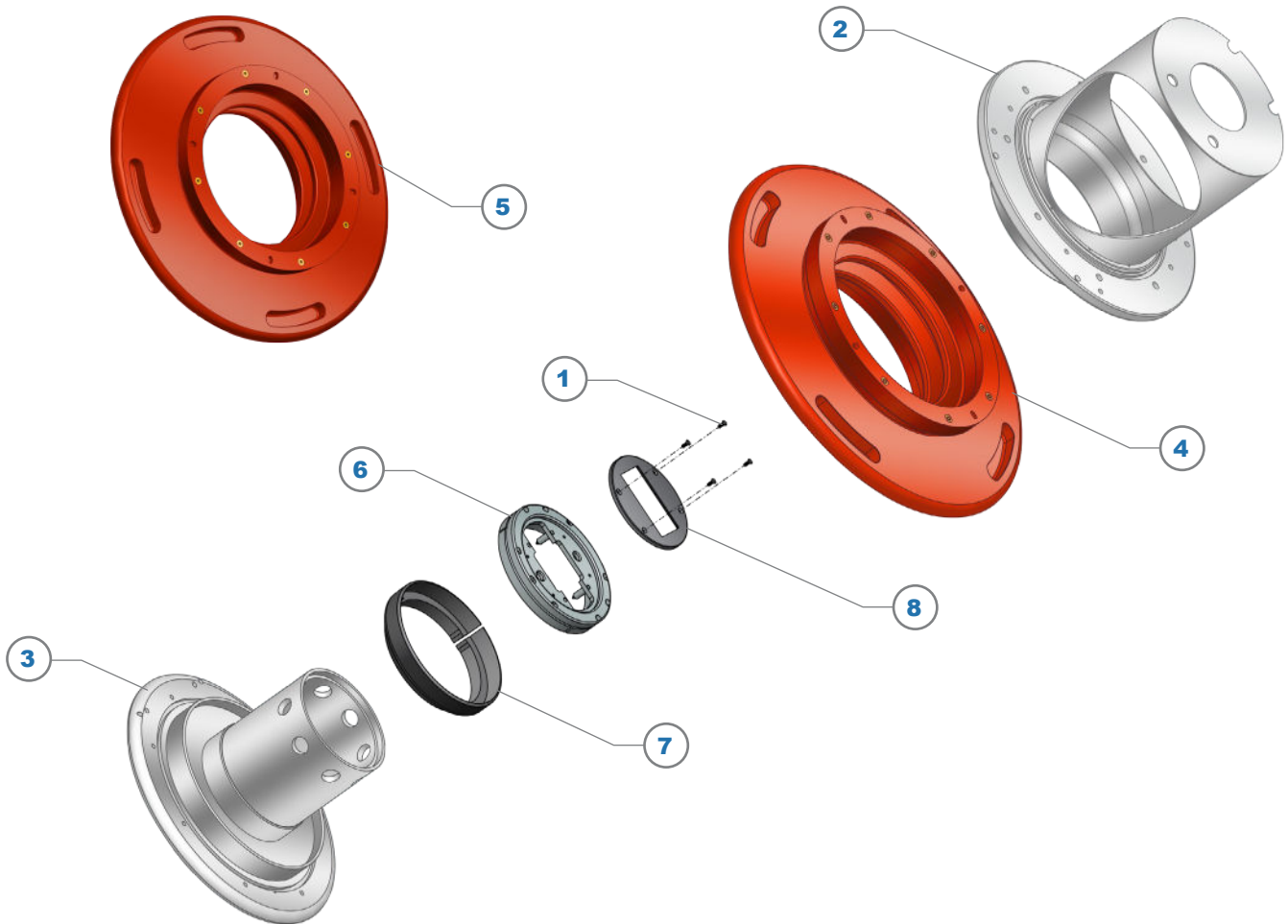
99280R

Flange, Repair, Custom
Quote provided after evaluation of repair.

ITEM	P/N	DESCRIPTION	QTY
1	8B330	8-32 x 7/16", SS, FHSS	4
2	99196	Liner	1
3	99280A	Flange, Floating Clamp, Shielded	1
4	99462	Source Collar	1
5	99463	Source Clamp Ring	1
6	99548	Source Shield	1
7	99636-WC	Bushing, Red	1
8	99636B-WC	Bushing, Tile Red	

99196A | 99280D

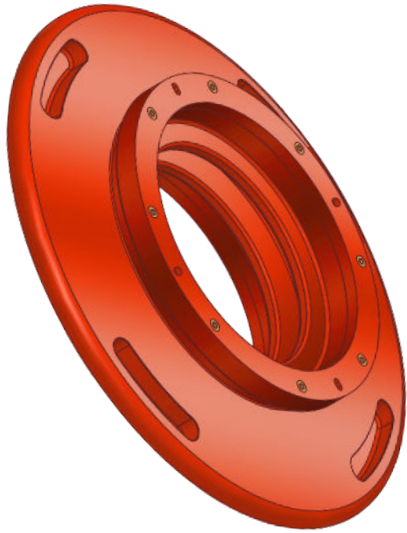
Non-Water Cooled Source Liner & Flange



ITEM	P/N	DESCRIPTION	QTY
1	8B330	8-32 x 7/16", SS, FHSS	4
2	99196A	Liner	1
3	99280D	Flange, Floating Clamp, Shielded, Non-Water Cooled	1
4	99454B-WC	Bushing, Red	1
5	99454BB-WC	Bushing, Tile Red	
6	99462	Source Collar	1
7	99463	Source Clamp Ring	1
8	99548	Source Shield	1

99454B-WC | 99454BB-WC

Bushing Options



99454B-WC
Bushing, Red

RoHS Compliant, Track Resistant RS-2272, Non-Leaded, Shielded, not compatible with GSD HC. Track resistant filled epoxy resin specifically designed for high temperature, high voltage insulator applications. This material provides excellent electrical grade insulation properties and chemical resistance, and will not char when exposed to a high voltage arc. This updated bushing has improved durability over previous materials. Suitable for use in GSD HE and VHE implanters ONLY. Provided with crate.

99454BB-WC
Bushing, Tile Red

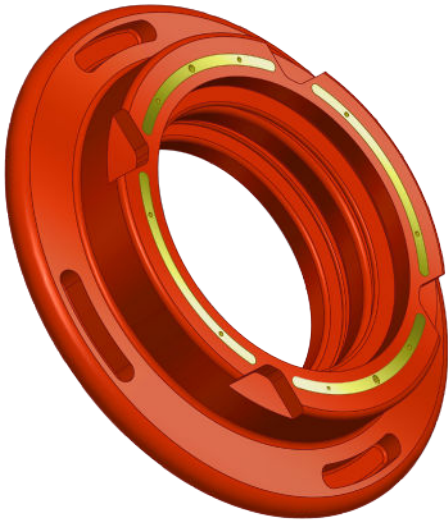
RoHS Compliant, Multi-Compound, Track Resistant I.D. with Shielded Epoxy Resin O.D., Red Multi-layer bushing with inner walls made of same track resistant material used in 99454B, with a special outer layer made of castable, lead free insulating grade, filled epoxy resin specifically designed for high voltage insulator applications requiring X-Ray shielding.

This material provides good electrical grade insulation properties, high mechanical properties, and superior arc resistance to any lead oxide filled epoxy. This material has equal x-ray shielding to a 25% lead oxide filled epoxy. This material is non-flammable and meets UL94V-0 requirements. This updated bushing has improved durability over previous materials. Provided with crate.



99636-WC | 99636B-WC

Bushing Options



99636-WC
Bushing, Red

RoHS Compliant, Track Resistant, Non-Leaded, Shielded. Track resistant filled epoxy resin specifically designed for high temperature, high voltage insulator applications. This material provides excellent electrical grade insulation properties and chemical resistance, and will not char when exposed to a high voltage arc. This updated bushing has improved durability over previous materials. Provided with crate.

99636B-WC
Bushing, Tile Red

RoHS Compliant, with X-Ray Shielding, the only RoHS compliant bushing that is compatible with GSD HC (X-Ray Shielded). Multi-layer bushing with inner walls made of same track resistant material used in 99636, with a special outer layer made of castable, lead free insulating grade, filled epoxy resin specifically designed for high voltage insulator applications requiring X-Ray shielding. This material provides good electrical grade insulation properties, high mechanical properties, and superior arc resistance to any lead oxide filled epoxy. This material has equal x-ray shielding to a 25% lead oxide filled epoxy. This material is non-flammable and meets UL94V-0 requirements. This updated bushing has improved durability over previous materials. Provided with crate.

