



Novellus 200mm Concept Two Speed

Significantly improve tool performance throughout entire PM cycle!

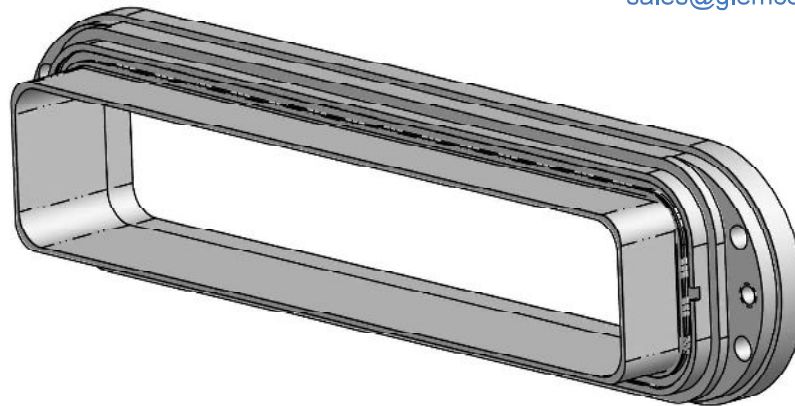
In process, the MESC flange seal is attacked by the plasma, and begins to leak. The leak can cause a slight drop in vacuum pressure resulting in process drifts and slowing production.

The innovative Glemco MESC flange insert fully protects the seal from the RF plasma. The result is significantly improved tool performance throughout the entire PM cycle*.

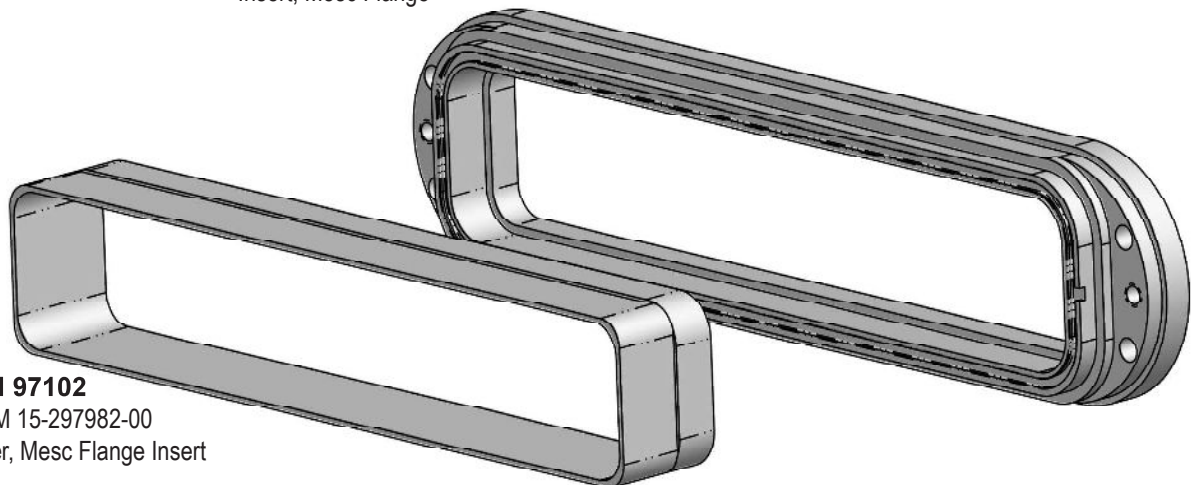
- **PM cycles improved from 90 to 365 days**
- **No evidence of erosion, leakage, mechanical damage or compression after 120 days of service.**

*represents actual data collected from end users

Interested Customers Contact:
sales@glemco.com



P/N 97099C
OEM 22-251953-00
Insert, Mesc Flange



P/N 97102
OEM 15-297982-00
Liner, Mesc Flange Insert