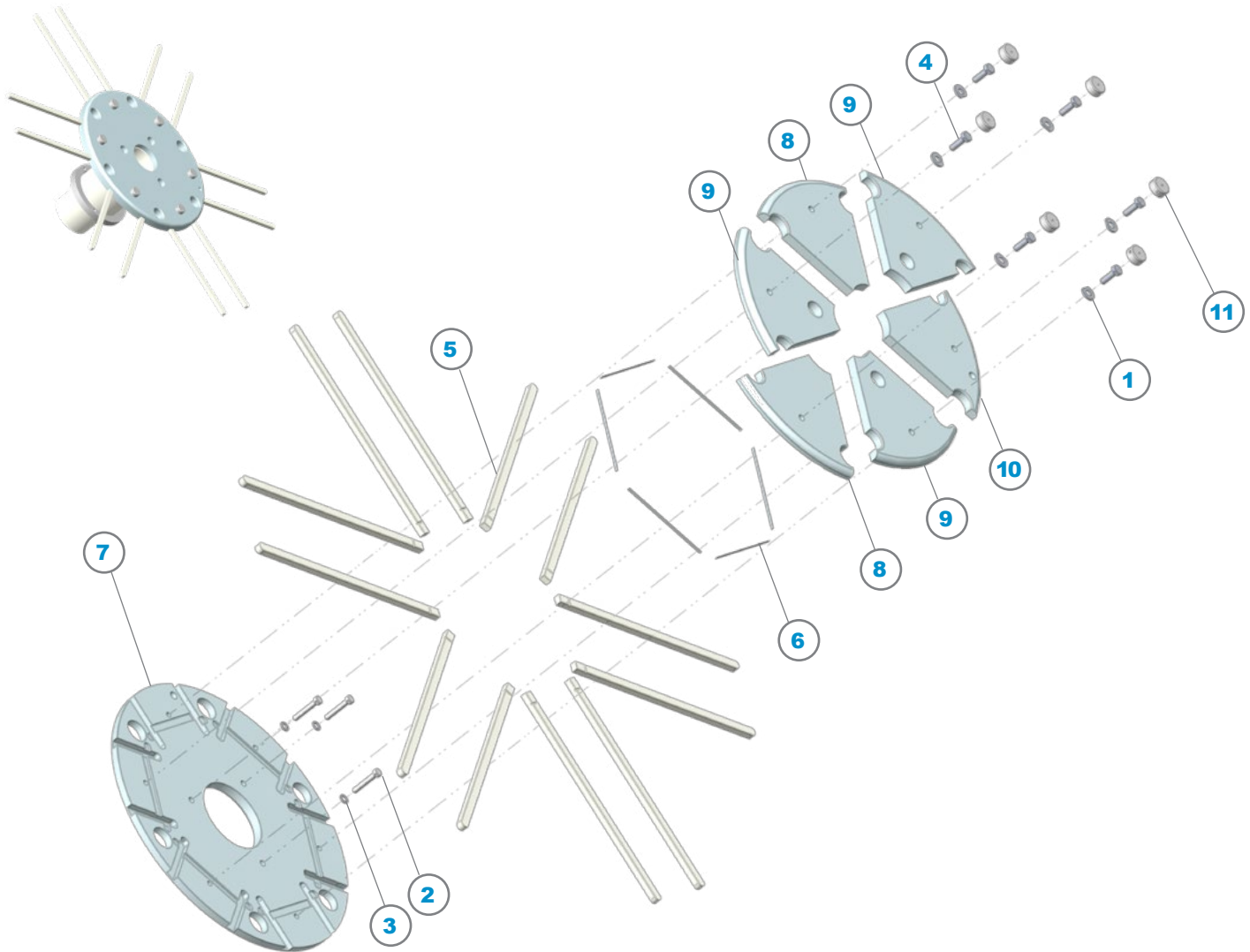


Sequel Spindle Components

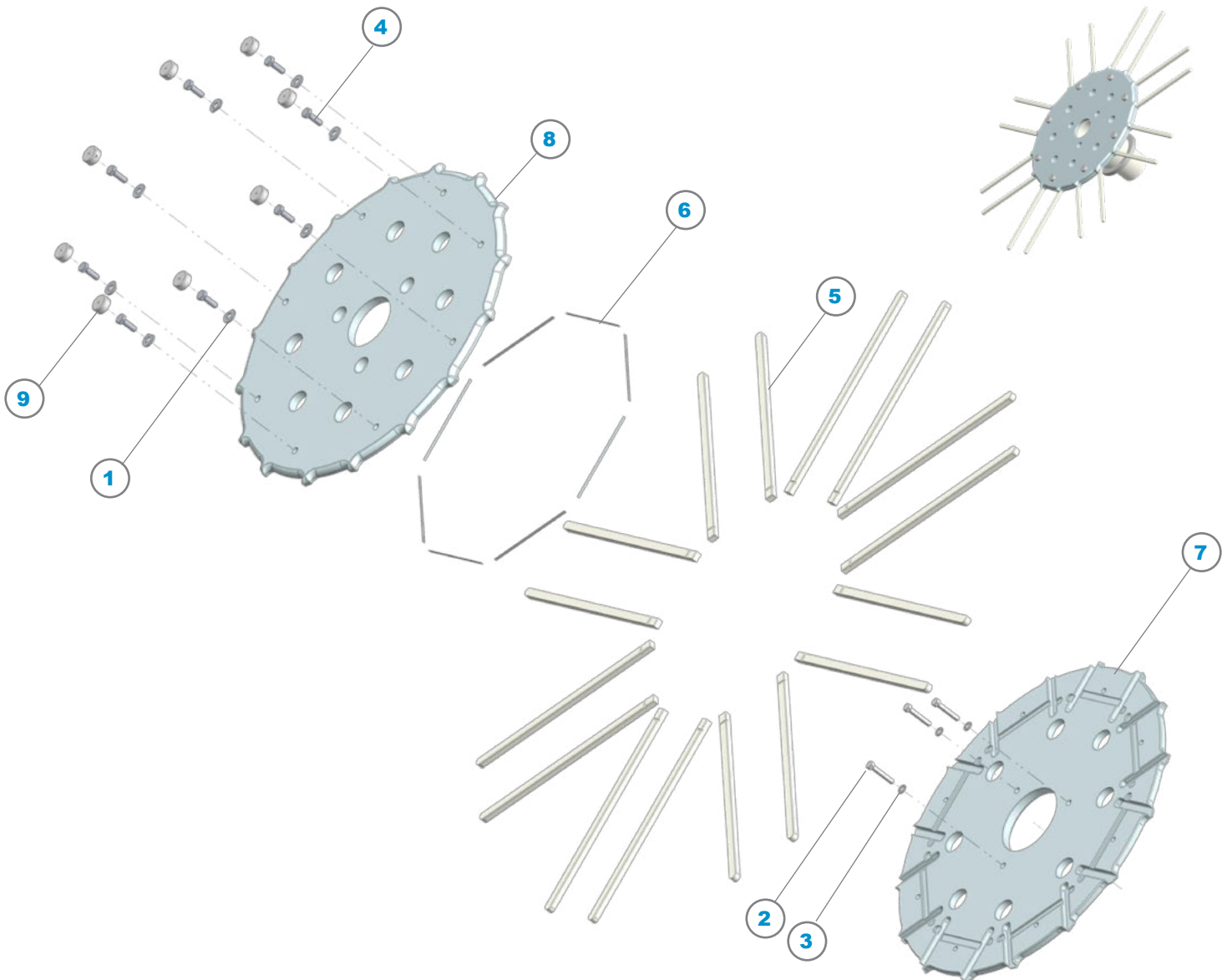
200mm



ITEM	P/N	DESCRIPTION	QTY
1	97010	#10, with Flat, Nickel, Washer, Flat	6
2	97040	Hex Head Bolt, 8-32, Nickel	3
3	97041	#8, Nickel, Washer, Flat	3
4	97043	Hex Head Bolt, 10-32, Nickel	6
5	97044	Fork Finger, Alumina	12
6	97058	Fork Retainer	6
7	97060	Bottom Plate, 200mm	1
8	97061	Top Plate A, Anti-Deflect	2
9	97062	Top Plate B, Anti-Deflect	3
10	97063	Top Plate C, Anti-Deflect	1
11	97068	Cup, Screw Cover	6

Sequel Spindle Components

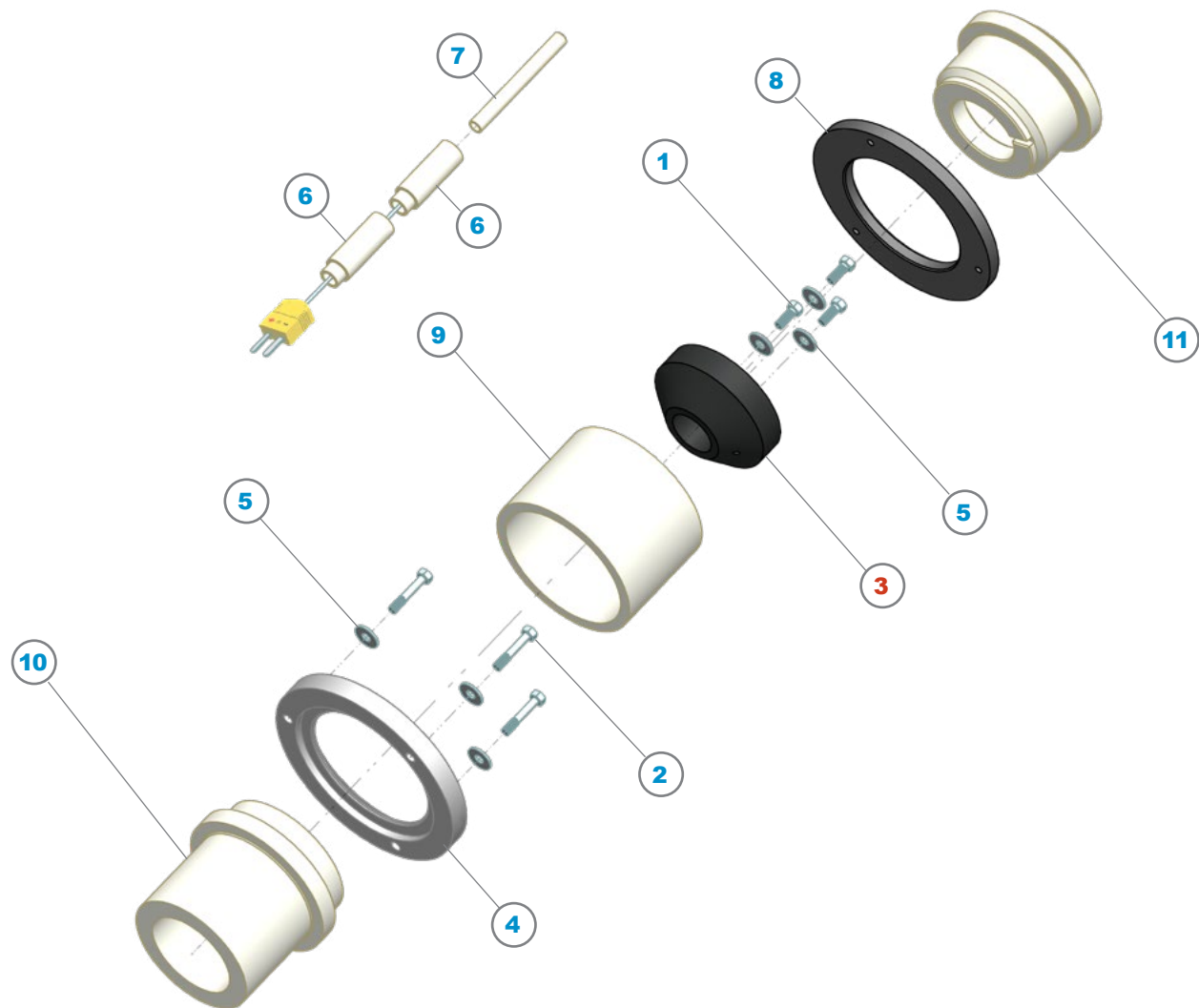
150mm



ITEM	P/N	DESCRIPTION	QTY
1	97010	#10, with Flat, Nickel, Washer, Flat	8
2	97040	Hex Head Bolt, 8-32, Nickel	3
3	97041	#8, Nickel, Washer, Flat	3
4	97043	Hex Head Bolt, 10-32, Nickel	8
5	97044	Fork Finger, Alumina	16
6	97058	Fork Retainer	8
7	97060B	Bottom Plate, 150mm	1
8	97060C	Top Plate, 150mm	1
9	97068	Cup, Screw Cover	8

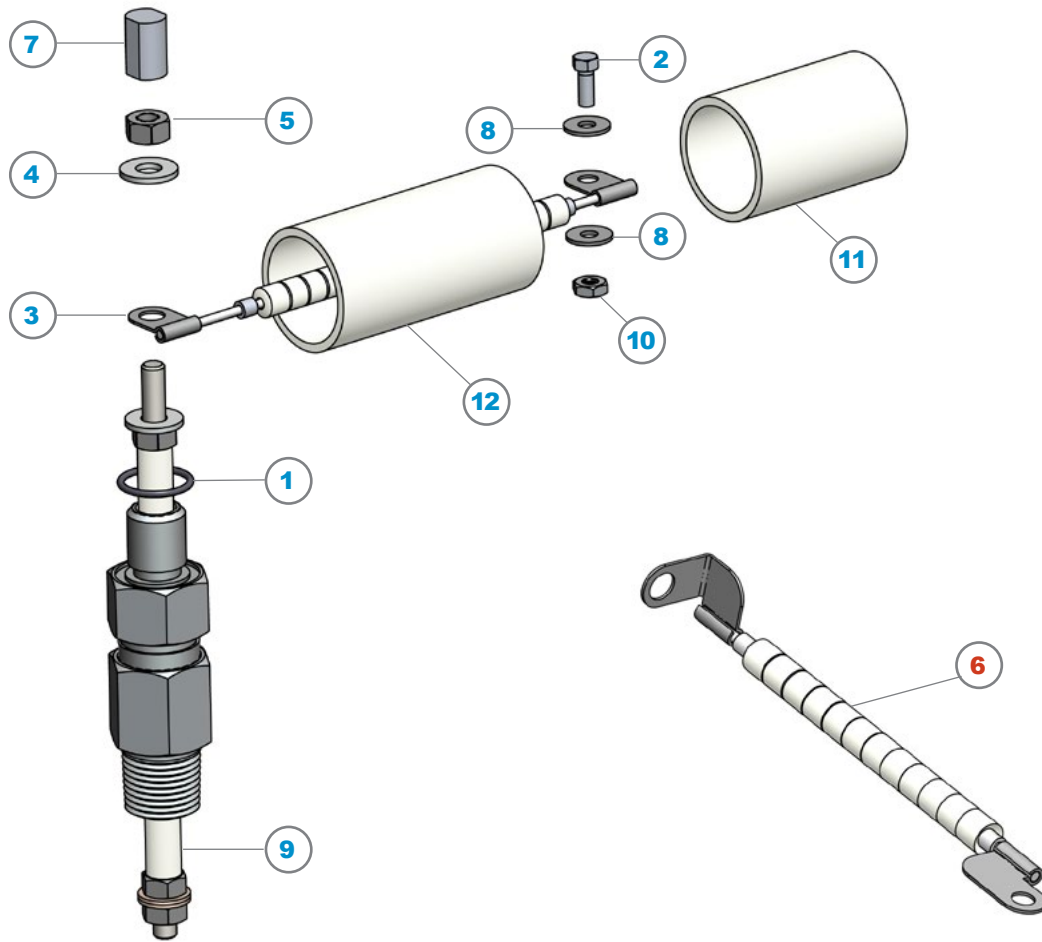
Sequel Spindle Components

200mm & 150mm



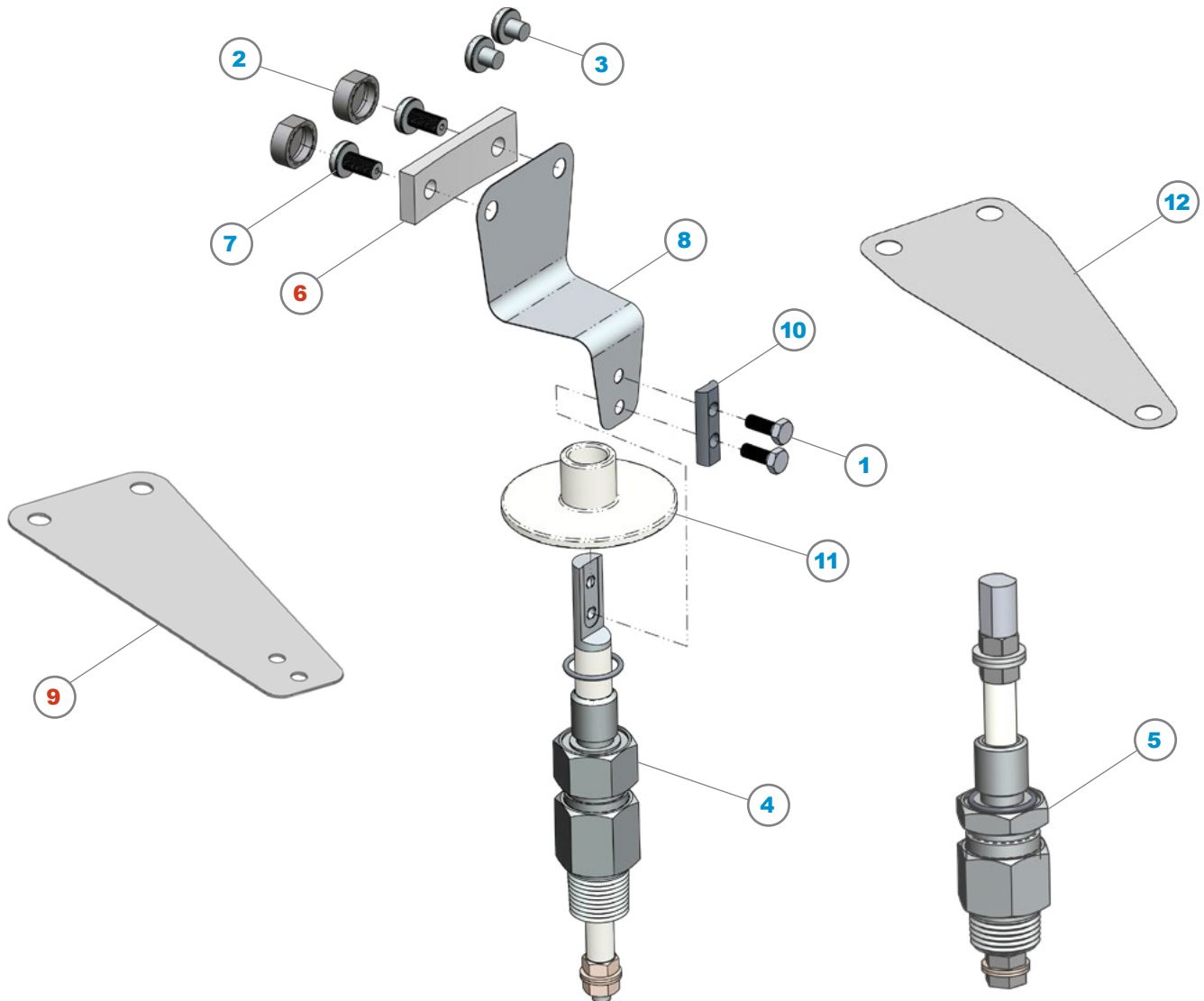
ITEM	P/N	DESCRIPTION	QTY
1	97001	8-32 x .36", Nickel, Hex Head Bolt	3
2	97003	8-32 x .164" x .890", Nickel, Hex Head Bolt	3
3	97035A	Shaft Flange Assembly, Keyed	1
4	97036	Hub Mount Clamp, Aluminum	1
5	97041	#8, Nickel, Washer, Flat	6
6	97065	Sleeve, For Thermocouple, Ceramic	2
7	97066	1/8" ID Tube, For Thermocouple, Ceramic	1
8	97067	Clamp, Flat	1
9	97069	Ring, Heater Hub, Ceramic	1
10	97070	Ring, Heater Centering, Ceramic	1
11	97071	Bushing, Keyed, Ceramic	1

Sequel Chamber Components



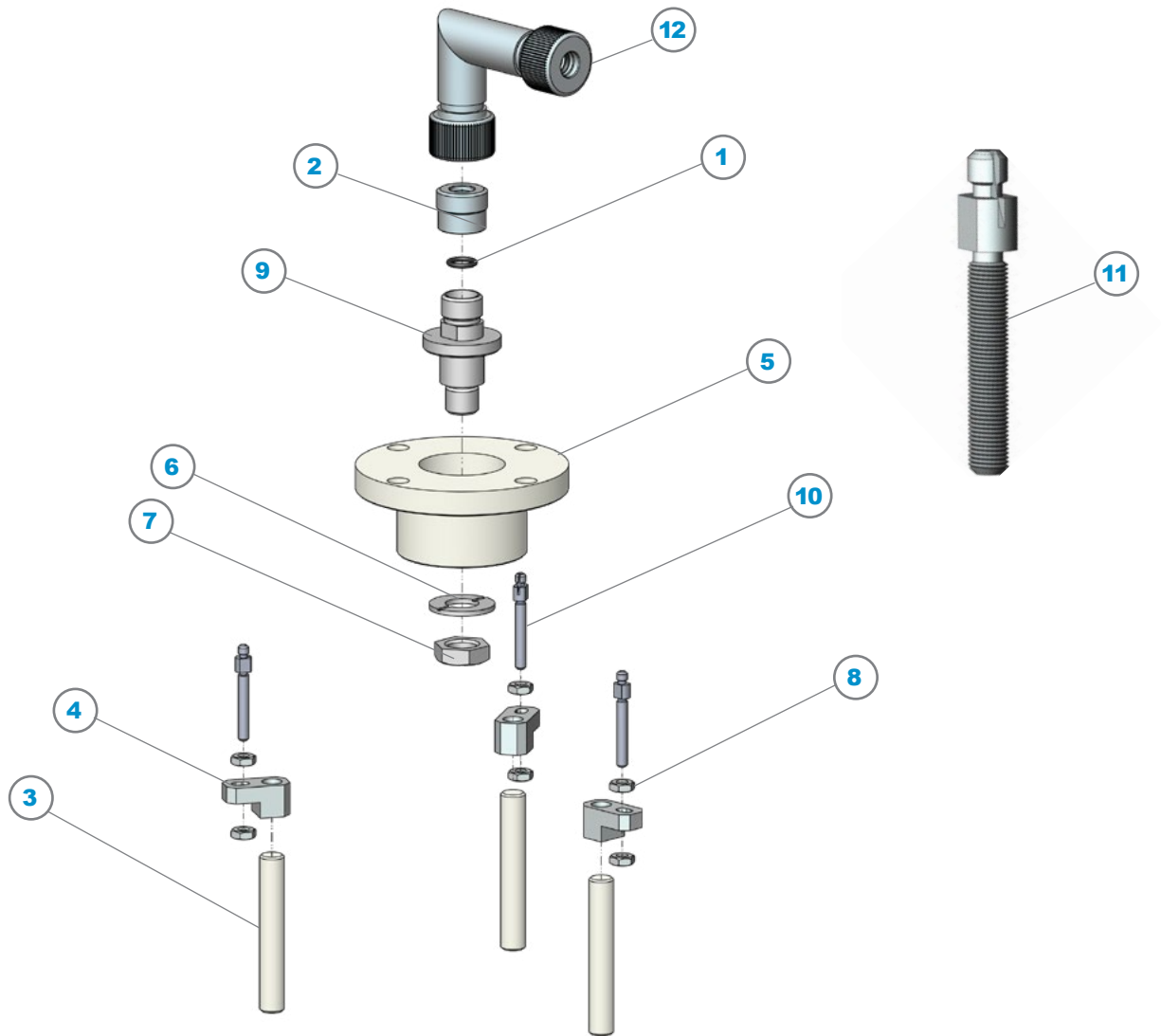
ITEM	P/N	DESCRIPTION	QTY
1	8A067V	-017, Viton, 75A Duro, O-Ring	2
2	97001	8-32 x .36", Nickel, Hex Head Bolt	1
3	97006	Electrical Cable Assembly, Heater, Long	1
4	97019	.281" ID x .623" OD, Nickel, Washer, Flat	1
5	97025	1/4-28, Nickel, Hex Nut	2
6	97028B	Electrical Cable Assembly, Heater, Modified	
7	97039	1/4-28 x .31" x .65" OAL, Nickel, Cap Nut	1
8	97041	#8, Nickel, Washer, Flat	2
9	97047B	Feed-Thru Assembly, Heater	1
10	97055	8-32 x .164", Aluminum, Hex Nut	1
11	97072	Sleeve, Heater Lead, 2.00"	1
12	97073	Sleeve, Heater Lead, 2.75"	1

Sequel Chamber Components



ITEM	P/N	DESCRIPTION	QTY
1	97043A	Hex Head Bolt, 10-32, Nickel, Modified	2
2	97045	Cup, Screw Cover	2
3	97046	1/4-20 x .25" Long, Nickel, SHCS	2
4	97047	Feed-Thru Assembly	1
5	97047A	Feed-Thru Assembly, Heater <i>Includes 8A067V, 97019, 97025 & 97039</i>	1
6	97048A	Clamp, RF Strap	1
7	97049	1/4-20 x .50" Long, Nickel, SHCS	2
8	97050	RF Strap	1
9	97050A	RF Strap, Modified, .032" Thick	
10	97051	Clamp, Feed-Thru To RF Strap	1
11	97053	Feed-Thru Cap, Ceramic	1
12	97127	RF Strap, Heater	

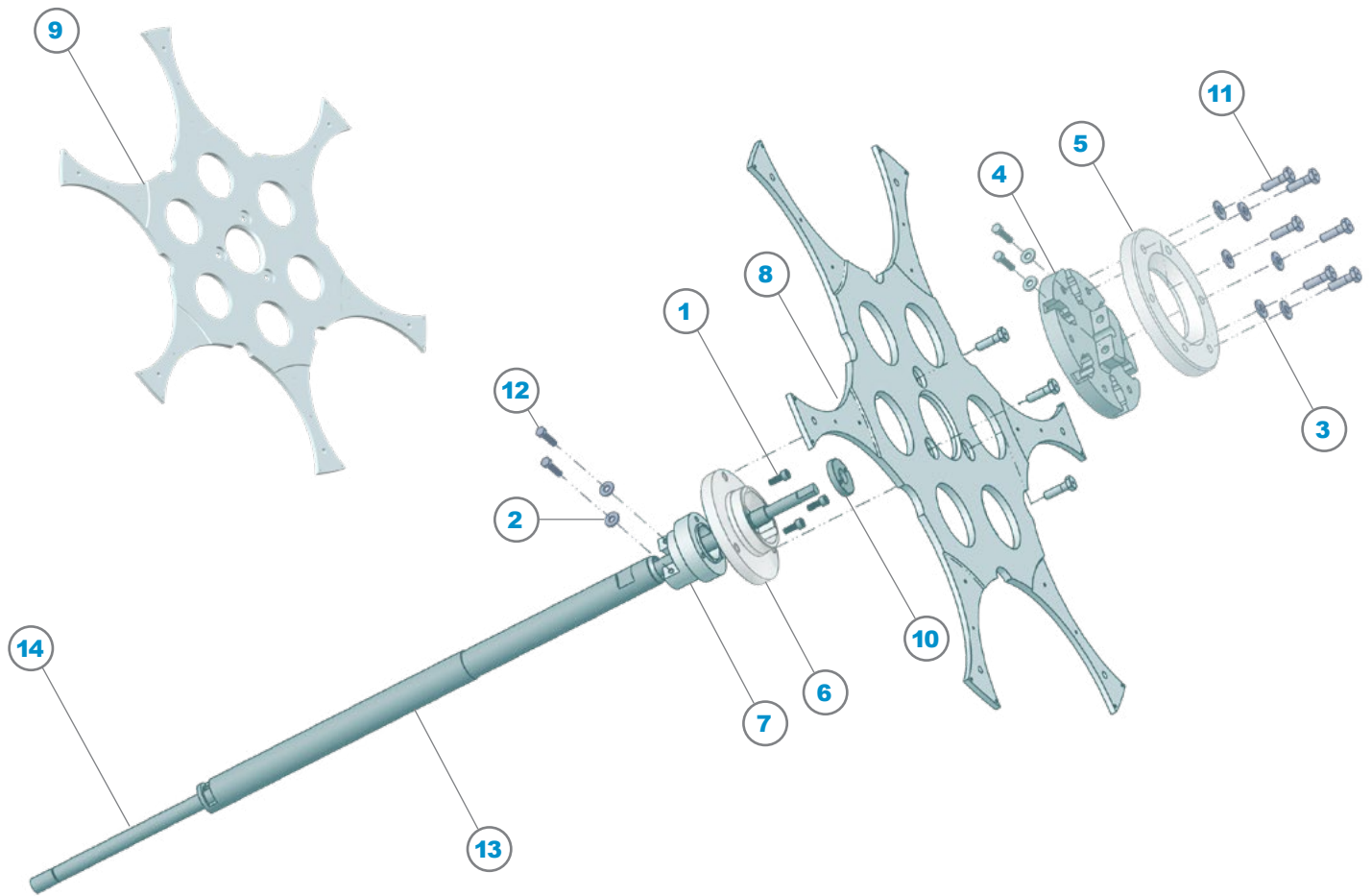
Sequel Shower Head Components



ITEM	P/N	DESCRIPTION	QTY
1	82912V	-012, Viton, 75A Duro, O-Ring	1
2	8B072	3/8", F/T Ultra-Torr, SS, Nut	1
3	97011	Gas Plate Adjuster, Ceramic	3
4	97013	Nozzle Adjuster Guide	3
5	97015	Hub, Ceramic	1
6	97026	Washer, Flat, Aluminum	1
7	97054	1/2-20 x .500", Aluminum, Hex Nut	1
8	97055	8-32 x .164", Aluminum, Hex Nut	6
9	97056	3/8" O-Seal Feed-Thru, Aluminum	1
10	97057	1.50" Hanger, Nozzle, 200mm	3
11	97057A	1.33" Hanger, Nozzle, 150mm	
12	97079	3/8" Tube, 90°, SS, Elbow Fitting	1

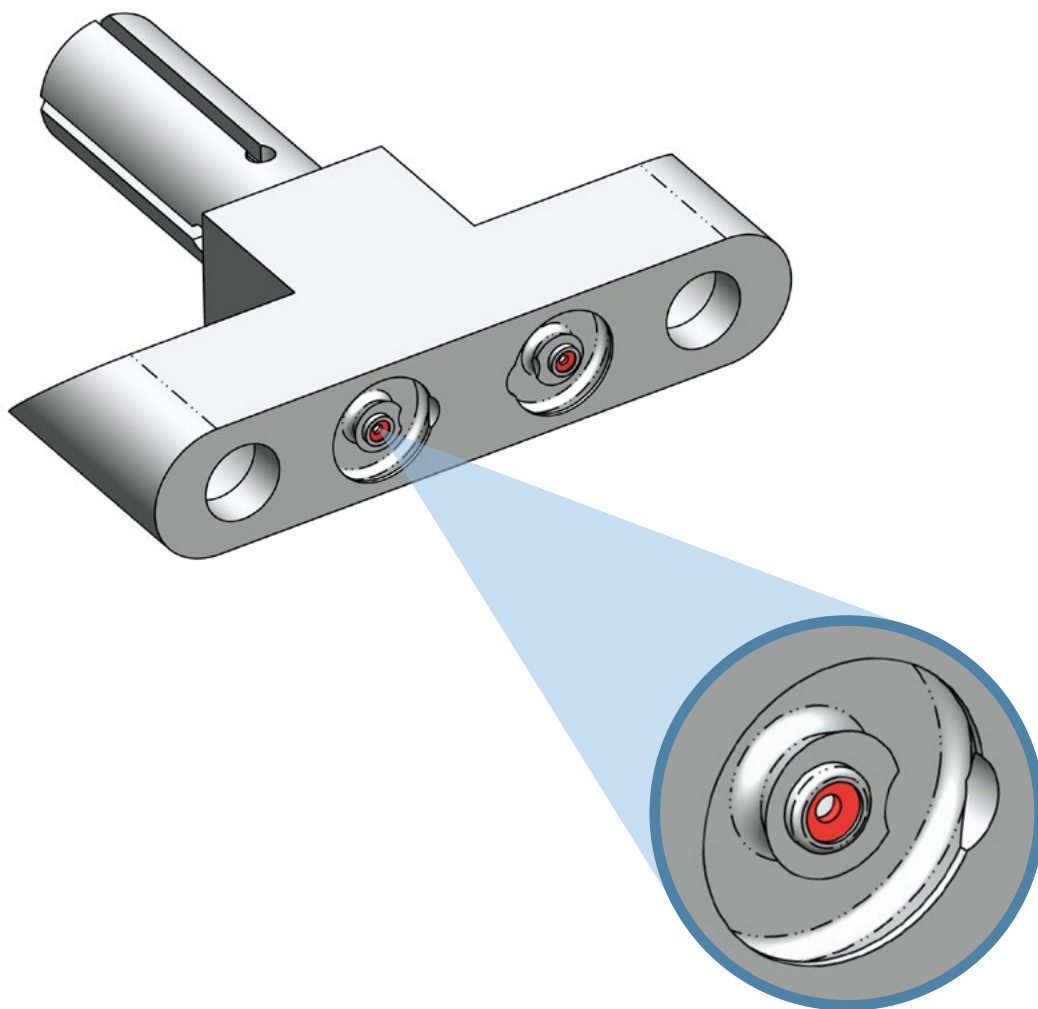
Altus Spindle Components

200mm & 150mm



ITEM	P/N	DESCRIPTION	QTY
1	8A367	10-32 x 1/2", SS, SHCS, Vented	3
2	97016	#10, .220" ID x .500" OD, Nickel, Washer, Flat	4
3	97019	.281" ID x .623" OD, Nickel, Washer, Flat	6
4	97083	Hub, Tong, Ring Lift, SS	1
5	97084	Retainer, Tong, Ring Lift, Aluminum	1
6	97088	Hub, Upper Indexer, Aluminum	1
7	97089	Hub, Lower Indexer, Nickel Plated SS	1
8	97090	Indexer, Wafer, Exclusion Option, 200mm	1
9	97090A	Indexer, Wafer, Exclusion Option, 150mm	
10	97091	Seal Retainer	1
11	97092	1/4-20 x .90", Nickel, Hex Head Bolt, Vented	9
12	97095	10-32 x .75", Nickel, Hex Head Bolt	4
13	97096	Spindle Shaft, Ring Lift	1
14	97097	Shaft, Ring Lift	1

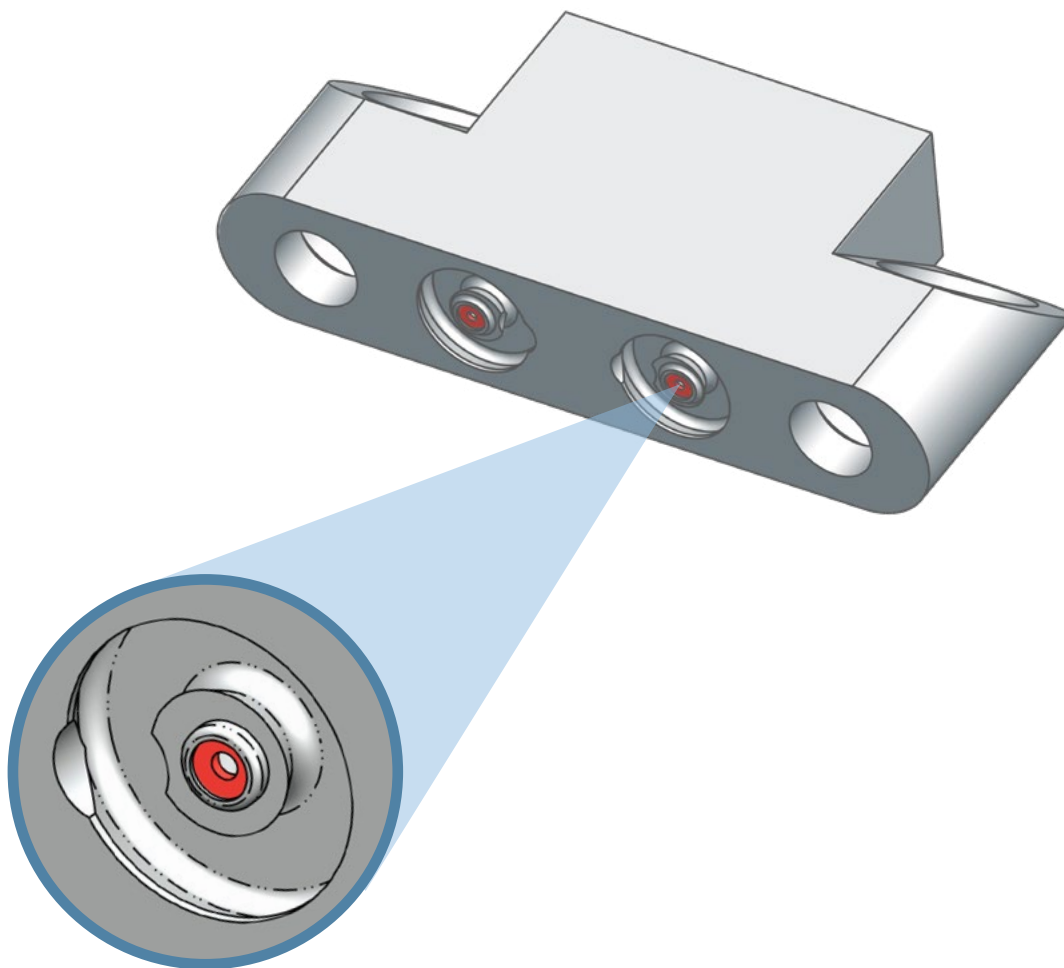
Speed Injector Nozzles



- *Proprietary polishing procedure for superb performance.*
- *Chemically inert synthetic ruby orifices for consistent processing.*
- *Process flexibility by customizing configurations.*

P/N	DESCRIPTION	OXYGEN ORIFICE	SILANE ORIFICE
97077-2220	Injector Nozzle, 22/20	.0220"	.0200"
97077-2221	Injector Nozzle, 22/21	.0220"	.0210"
97077-2222	Injector Nozzle, 22/22	.0220"	.0220"
97077-2223	Injector Nozzle, 22/23	.0220"	.0230"
97077-2224	Injector Nozzle, 22/24	.0220"	.0240"
97077-2323	Injector Nozzle, 23/23	.0230"	.0230"
97077-2424	Injector Nozzle, 24/24	.0240"	.0240"

Speed Split Injector Nozzles

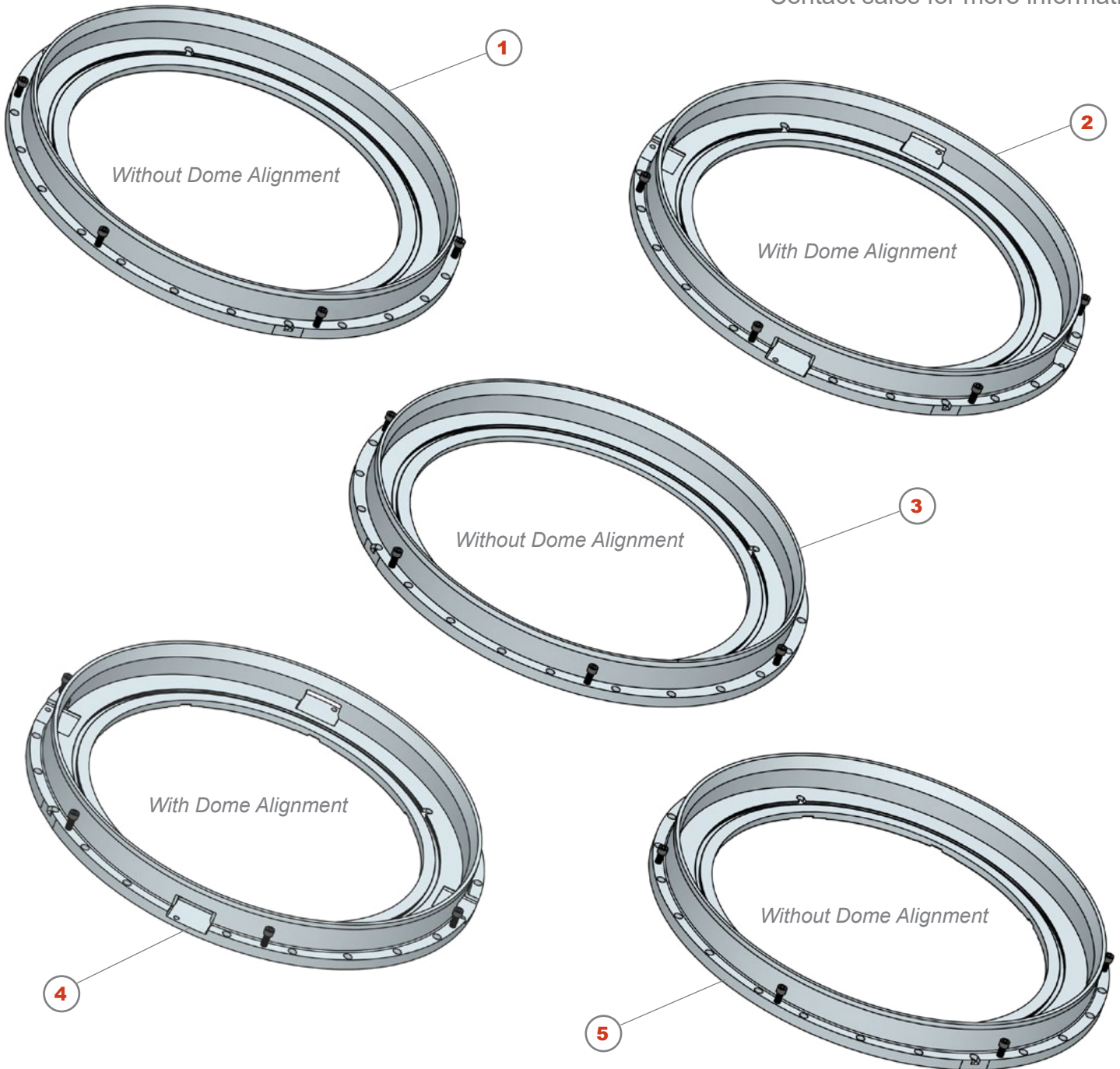


- *Proprietary polishing procedure for superb performance.*
- *Chemically inert synthetic ruby orifices for consistent processing.*
- *Process flexibility by customizing configurations.*

P/N	DESCRIPTION	OXYGEN ORIFICE	SILANE ORIFICE
97077A-2220	Injector Nozzle, 22/20	.0220"	.0200"
97077A-2221	Injector Nozzle, 22/21	.0220"	.0210"
97077A-2222	Injector Nozzle, 22/22	.0220"	.0220"
97077A-2223	Injector Nozzle, 22/23	.0220"	.0230"
97077A-2224	Injector Nozzle, 22/24	.0220"	.0240"

Enhanced HDP Gas Trench Covers

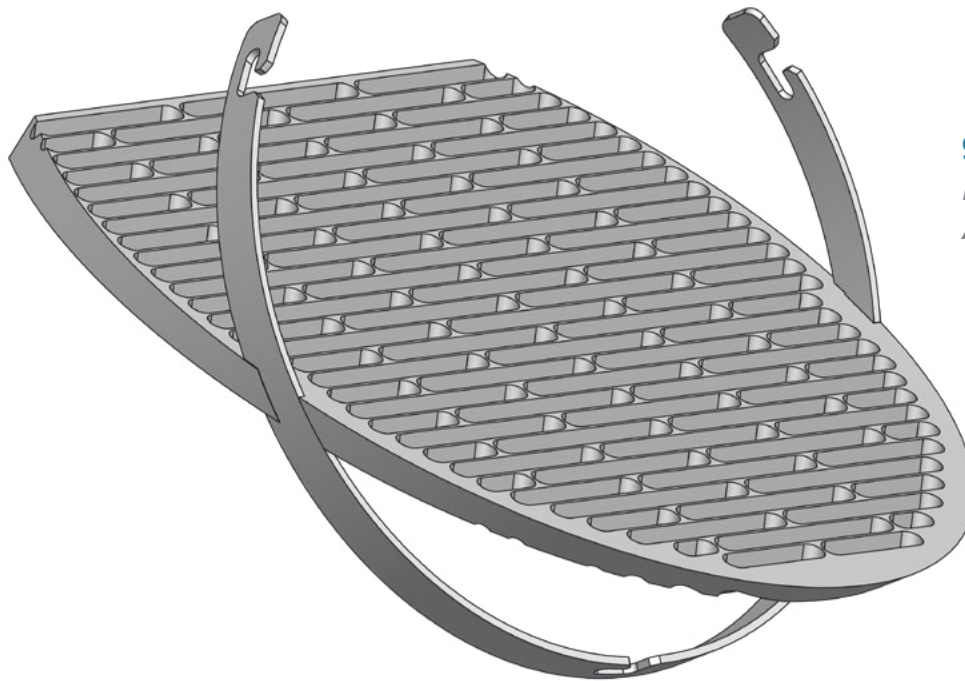
Contact sales for more information



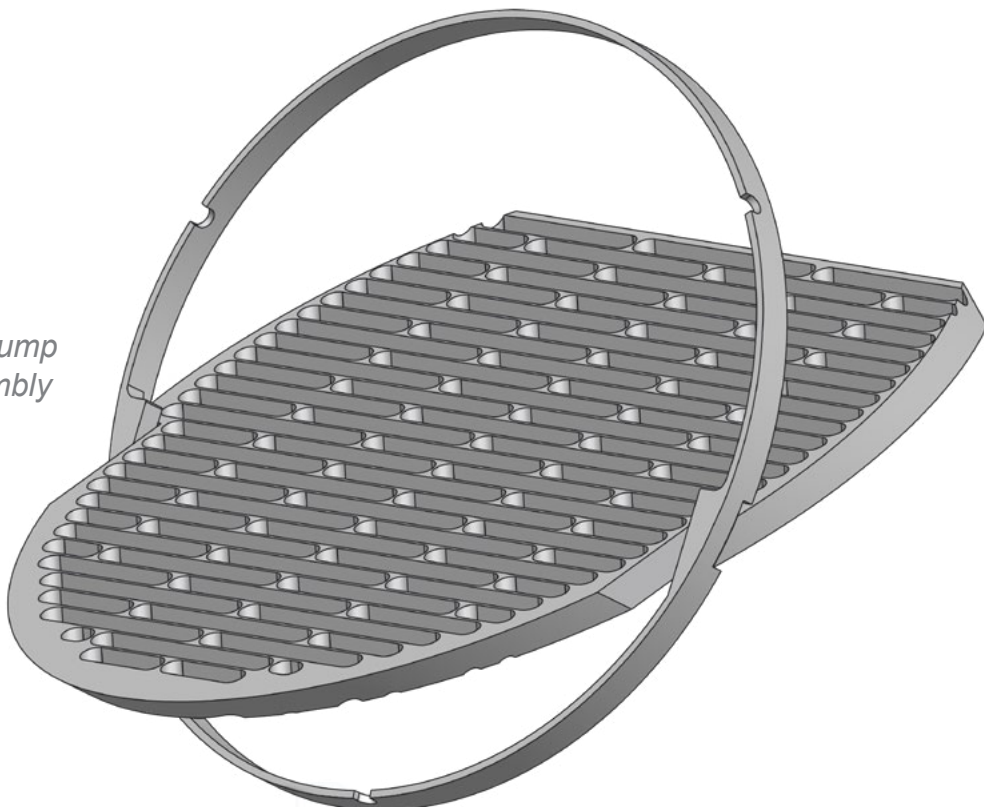
Each assembly includes: 6 each of P/N's 8A375 and 8B261

ITEM	P/N	DESCRIPTION
1	97113	Gas Trench Cover Assembly, Split Injector, Modified, Without Dome Alignment
2	97113A	Gas Trench Cover Assembly, Split Injector, Modified, With Shielding and Dome Alignment
3	97113B	Gas Trench Cover Assembly, Single Injector, Modified, Without Dome Alignment
4	97113C	Gas Trench Cover Assembly, Single Injector, Modified, With Dome Alignment
5	97113D	Gas Trench Cover Assembly, Single Injector, Modified, Without Dome Alignment

C1/C2/Sequel Pump Shield Assemblies



97106
*Pump Shield
Assembly*

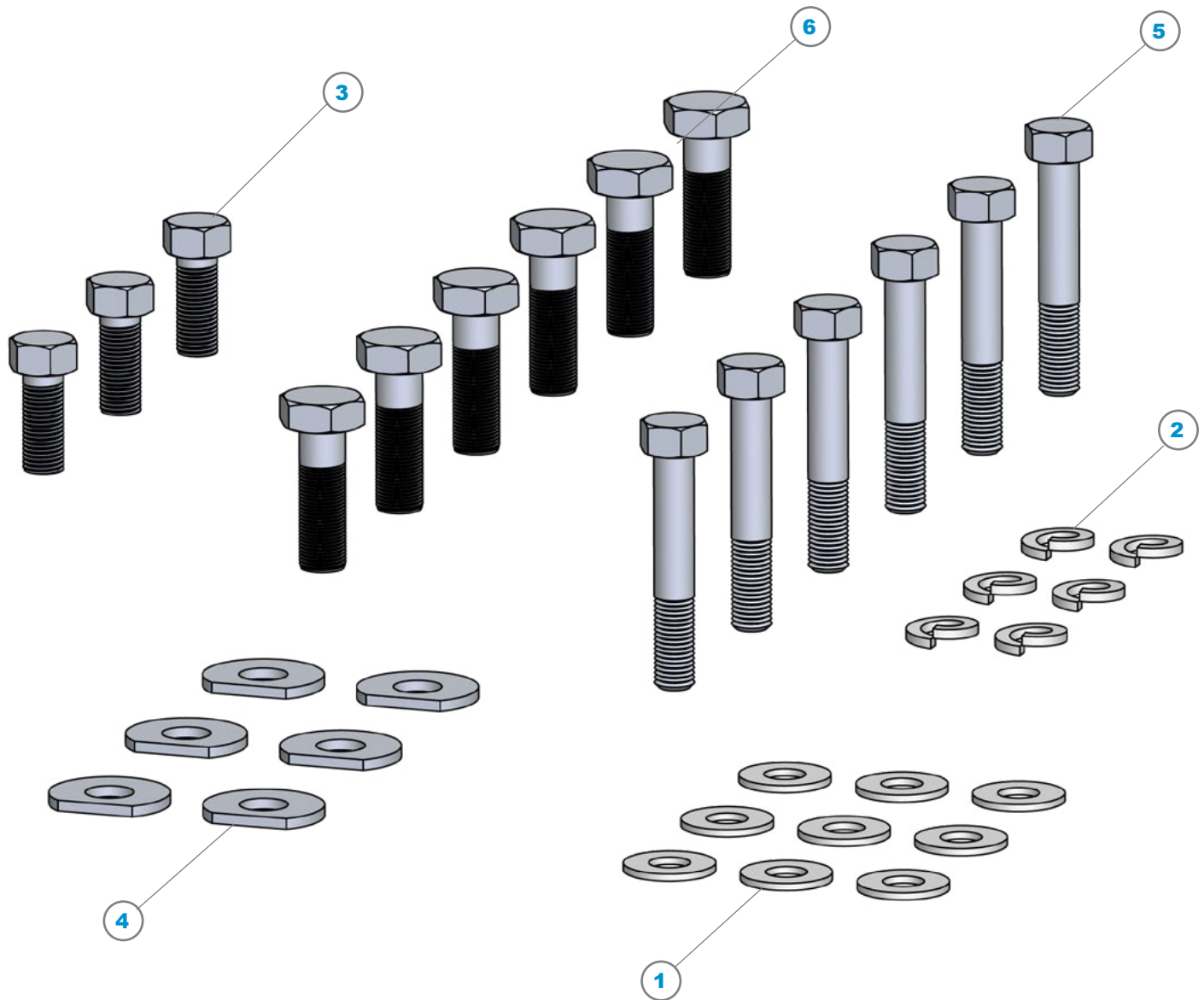


97106A
*Louver Turbo Pump
and Ring Assembly*

C1/C2/Sequel Spindle Shaft Hardware Kit

K97001

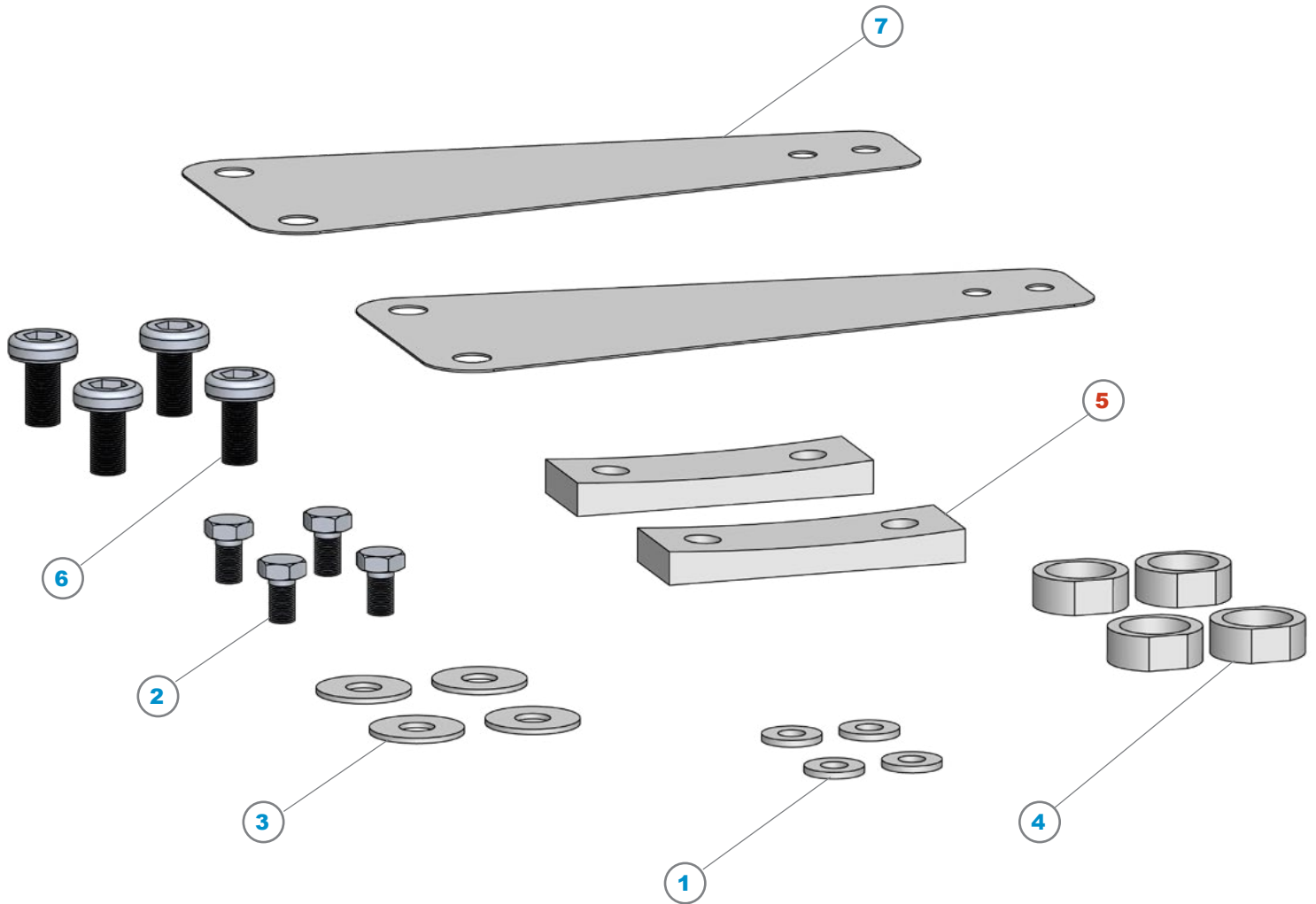
Glemco kits are customizable contact sales for more information



ITEM	P/N	DESCRIPTION	QTY
1	8A889	#8, .170" ID x .375" OD, Aluminum, Washer, Flat	9
2	8B477	#8, .174" ID x .293" OD, Aluminum, Washer, Split, Lock	6
3	97001	8-32 x .36", Nickel, Hex Head Bolt	3
4	97010	#10, with Flat, Nickel, Washer, Flat	6
5	97040	Hex Head Bolt, 8-32, Nickel	6
6	97043	Hex Head Bolt, 10-32, Nickel	6

C1/C2/Sequel RF Straps, Clamps & Hardware Kit

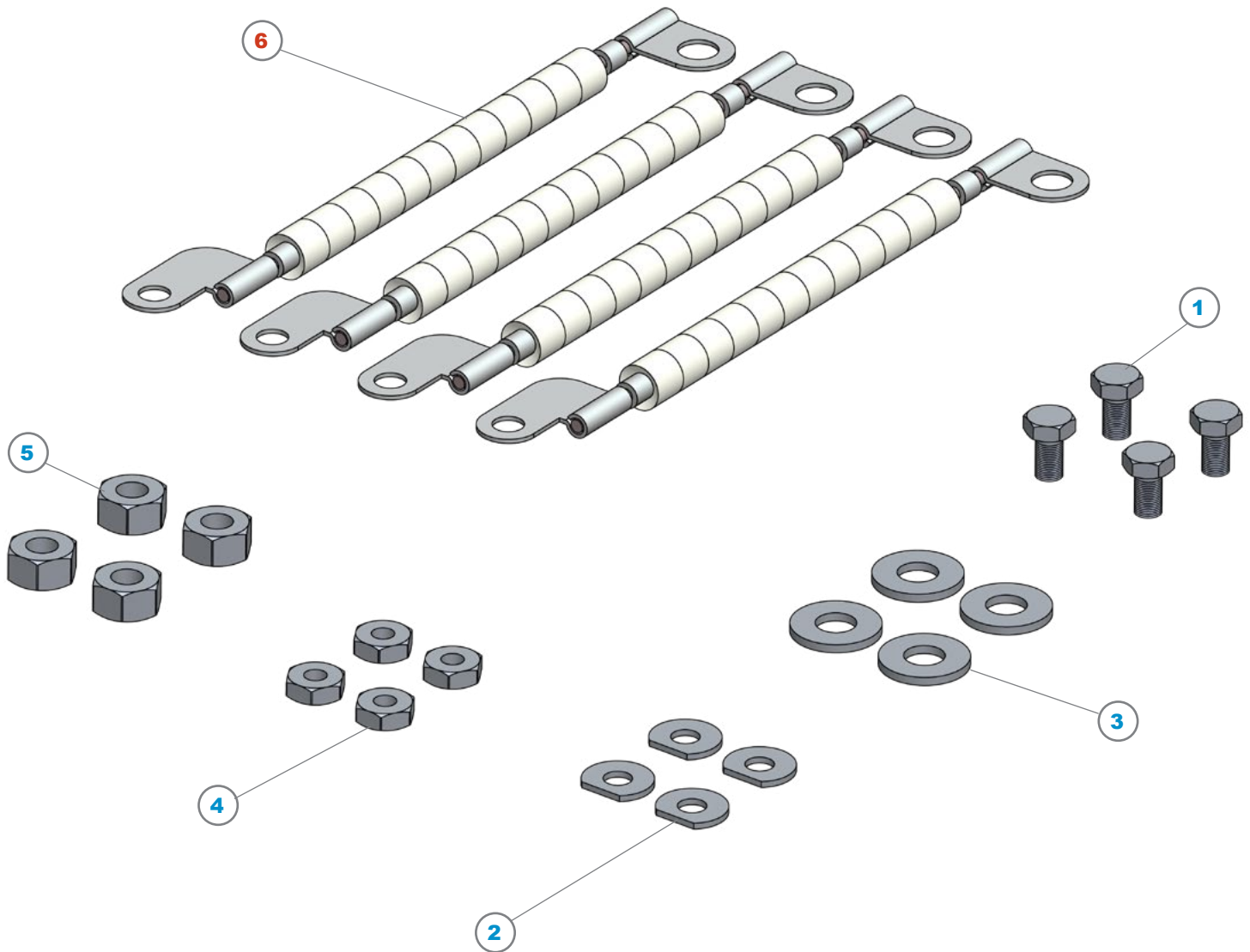
K97002



ITEM	P/N	DESCRIPTION	QTY
1	8A890	#10, .200" ID x .438" OD, Aluminum, Washer, Flat	4
2	97001A	10-32 x .34" x .46" OAL, Nickel, Hex Head Bolt	4
3	97042	.266" ID x .687" OD, Aluminum, Washer, Flat	4
4	97045	Cup, Screw Cover	4
5	97048A	Clamp, RF Strap	2
6	97049	1/4-20 x .50" Long, Nickel, SHCS	4
7	97050	RF Strap	2

C1/Sequel Hardware & 97028C Cables Kit

K97003

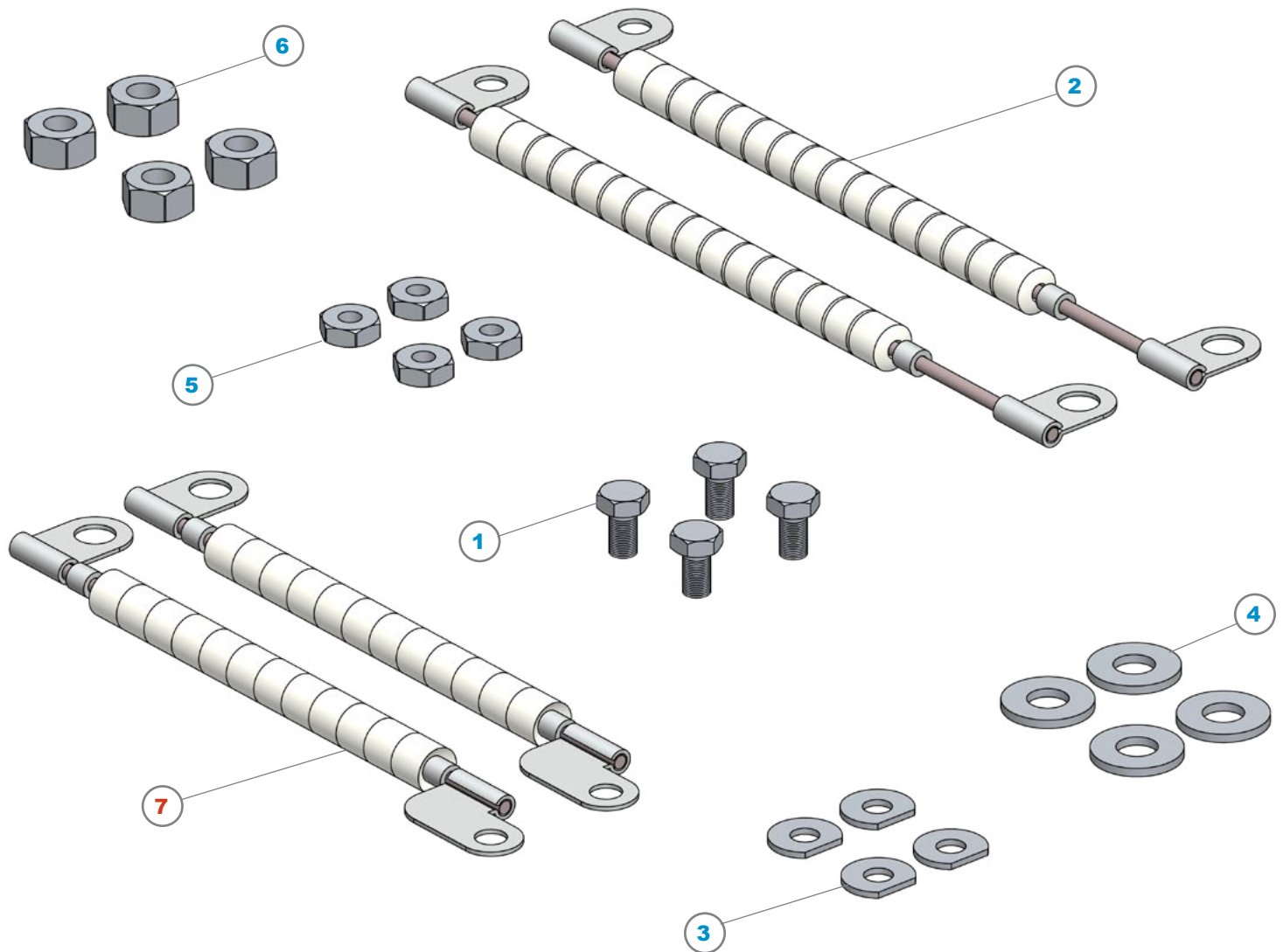


ITEM	P/N	DESCRIPTION	QTY
1	97001A	10-32 x .34" x .46" OAL, Nickel, Hex Head Bolt	4
2	97010	#10, with Flat, Nickel, Washer, Flat	4
3	97019	.281" ID x .623" OD, Nickel, Washer, Flat	4
4	97020	10-32 x .190", Nickel, Hex Nut	4
5	97025	1/4-28, Nickel, Hex Nut	4
6	97028C	Electrical Cable Assembly, Heater, Modified	4

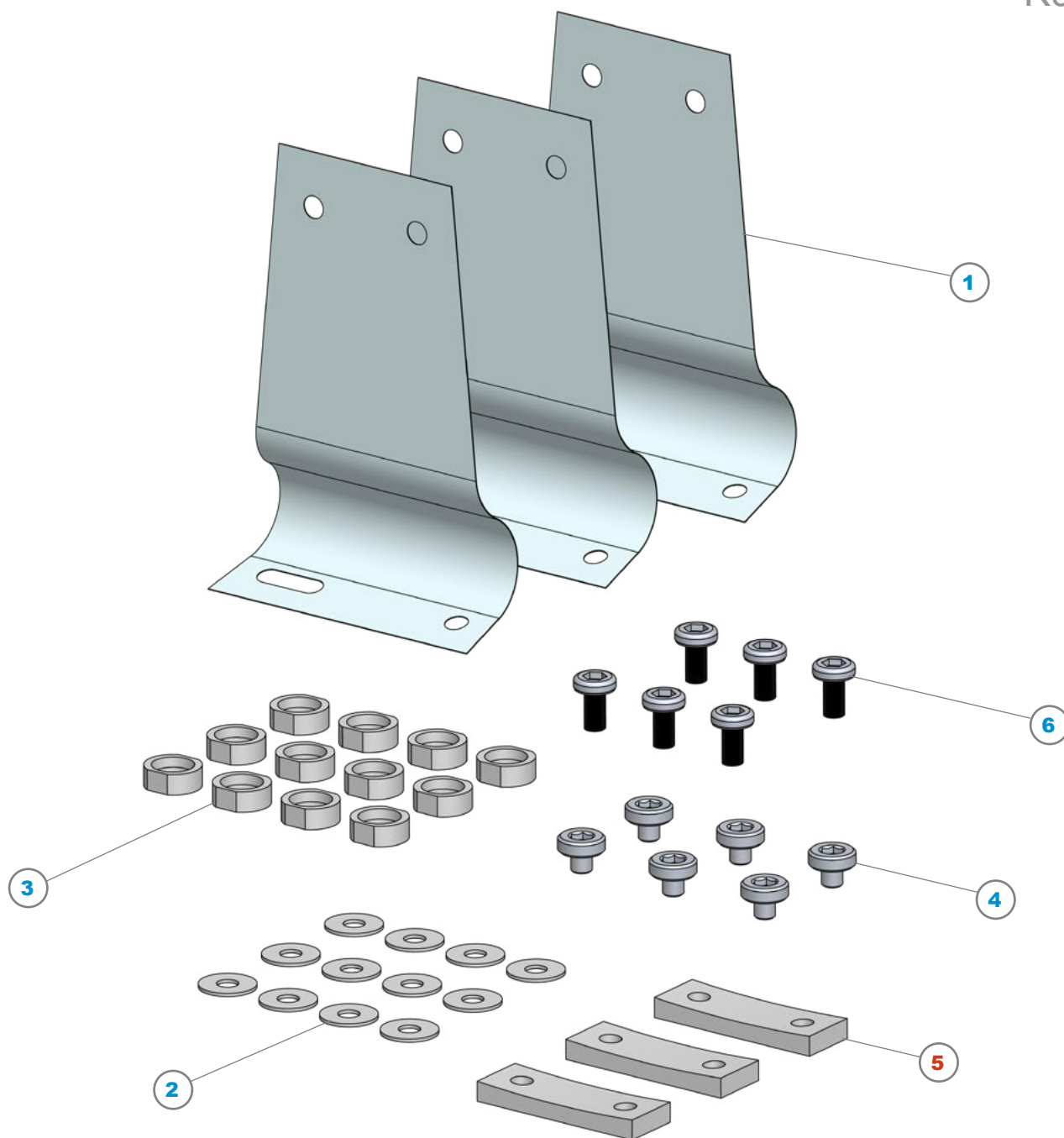


C1/Sequel Hardware, 97006 & 97028C Cables Kit

K97003A



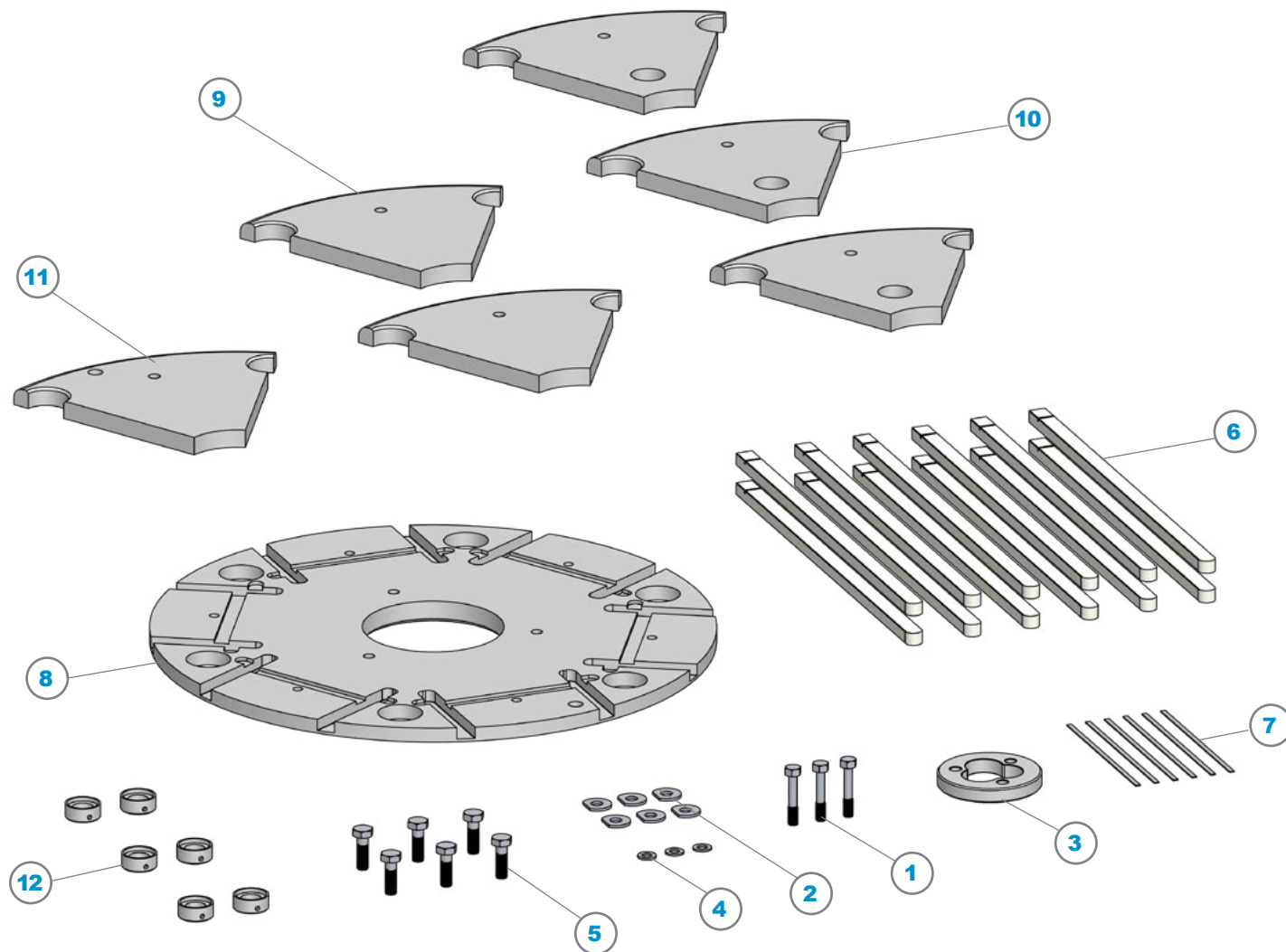
ITEM	P/N	DESCRIPTION	QTY
1	97001A	10-32 x .34" x .46" OAL, Nickel, Hex Head Bolt	4
2	97006	Electrical Cable Assembly, Heater, Long	2
3	97010	#10, with Flat, Nickel, Washer, Flat	4
4	97019	.281" ID x .623" OD, Nickel, Washer, Flat	4
5	97020	10-32 x .190", Nickel, Hex Nut	4
6	97025	1/4-28, Nickel, Hex Nut	4
7	97028C	Electrical Cable Assembly, Heater, Modified	2



ITEM	P/N	DESCRIPTION	QTY
1	97008	Heater Ground Strap, Aluminum	3
2	97042	.266" ID x .687" OD, Aluminum, Washer, Flat	12
3	97045	Cup, Screw Cover	12
4	97046	1/4-20 x .25" Long, Nickel, SHCS	6
5	97048A	Clamp, RF Strap	3
6	97049	1/4-20 x .50" Long, Nickel, SHCS	6

C1/Sequel Metal Top & Bottom Plates Kit

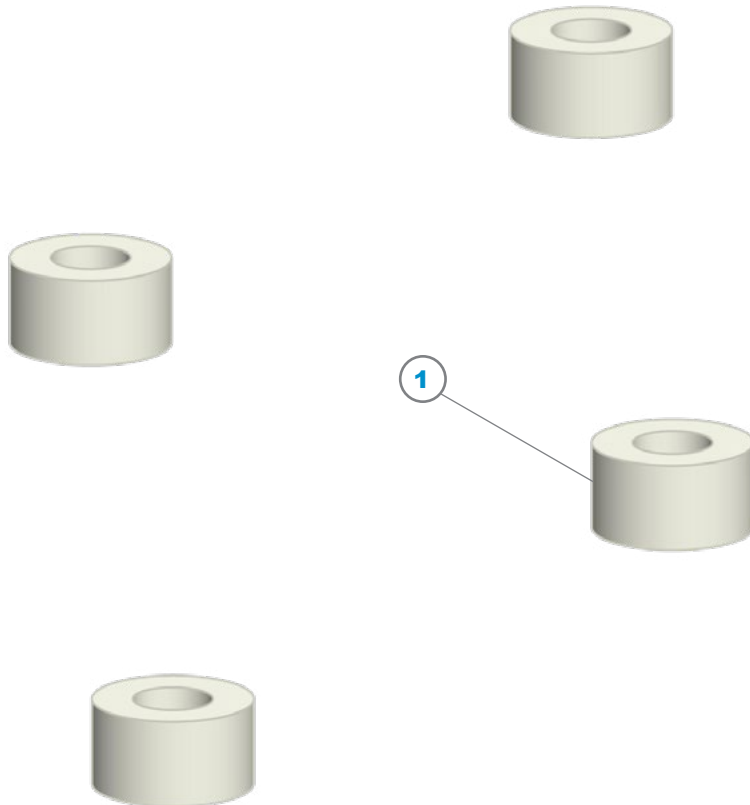
K97005



ITEM	P/N	DESCRIPTION	QTY
1	97003	8-32 x .164" x .890", Nickel, Hex Head Bolt	3
2	97010	#10, with Flat, Nickel, Washer, Flat	6
3	97037	Rotational Clamp, Aluminum	1
4	97041	#8, Nickel, Washer, Flat	3
5	97043	Hex Head Bolt, 10-32, Nickel	6
6	97044	Fork Finger, Alumina	12
7	97058	Fork Retainer	6
8	97060	Bottom Plate, 200mm	1
9	97061	Top Plate A, Anti-Deflect	2
10	97062	Top Plate B, Anti-Deflect	3
11	97063	Top Plate C, Anti-Deflect	1
12	97068	Cup, Screw Cover	6

C1/Sequel 97064 Heater Block Pins Kit

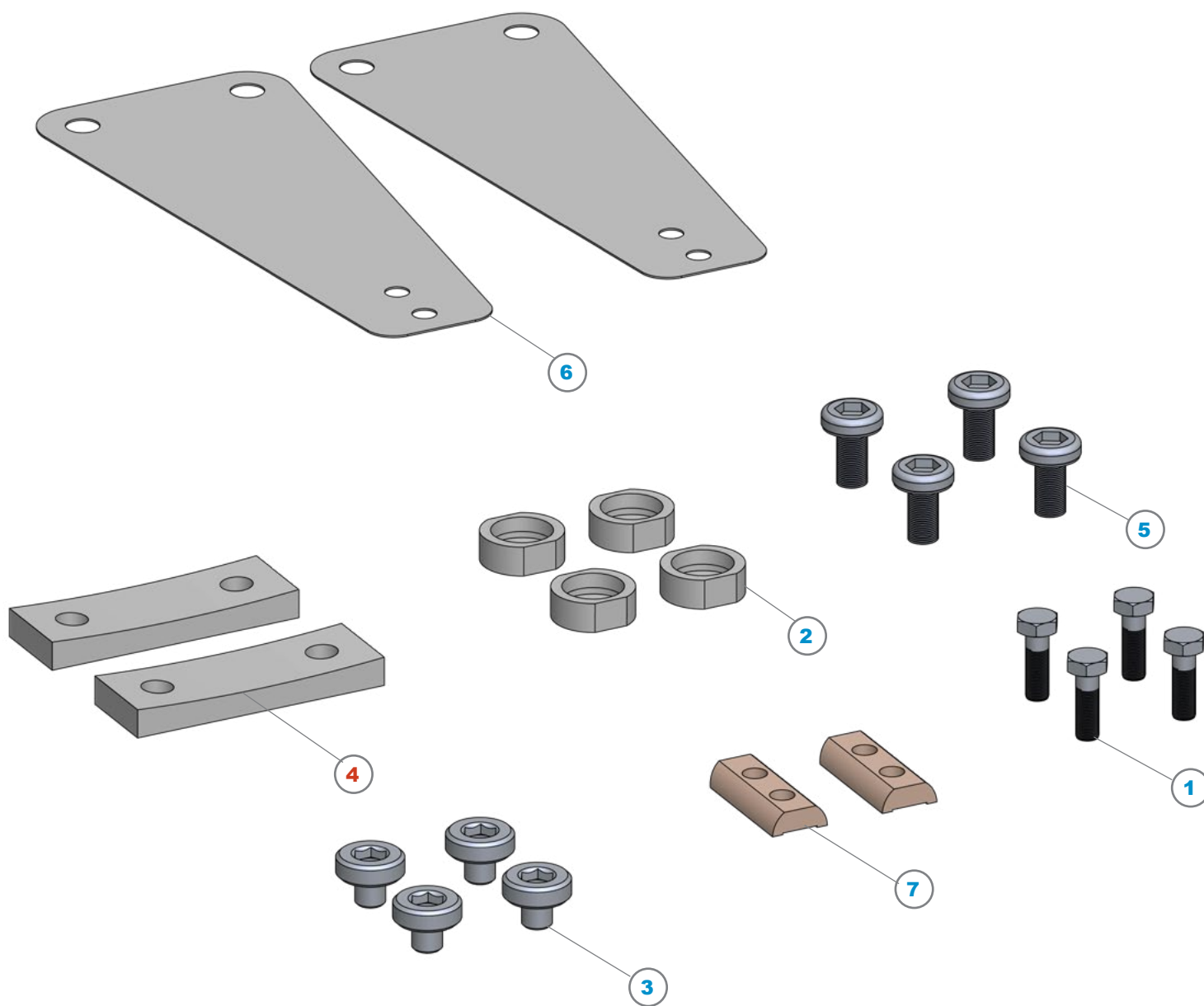
K97006



ITEM	P/N	DESCRIPTION	QTY
1	97064	Pin, Heater Block, Vented, Ceramic	4

C1/Sequel M05 RF Strap Kit

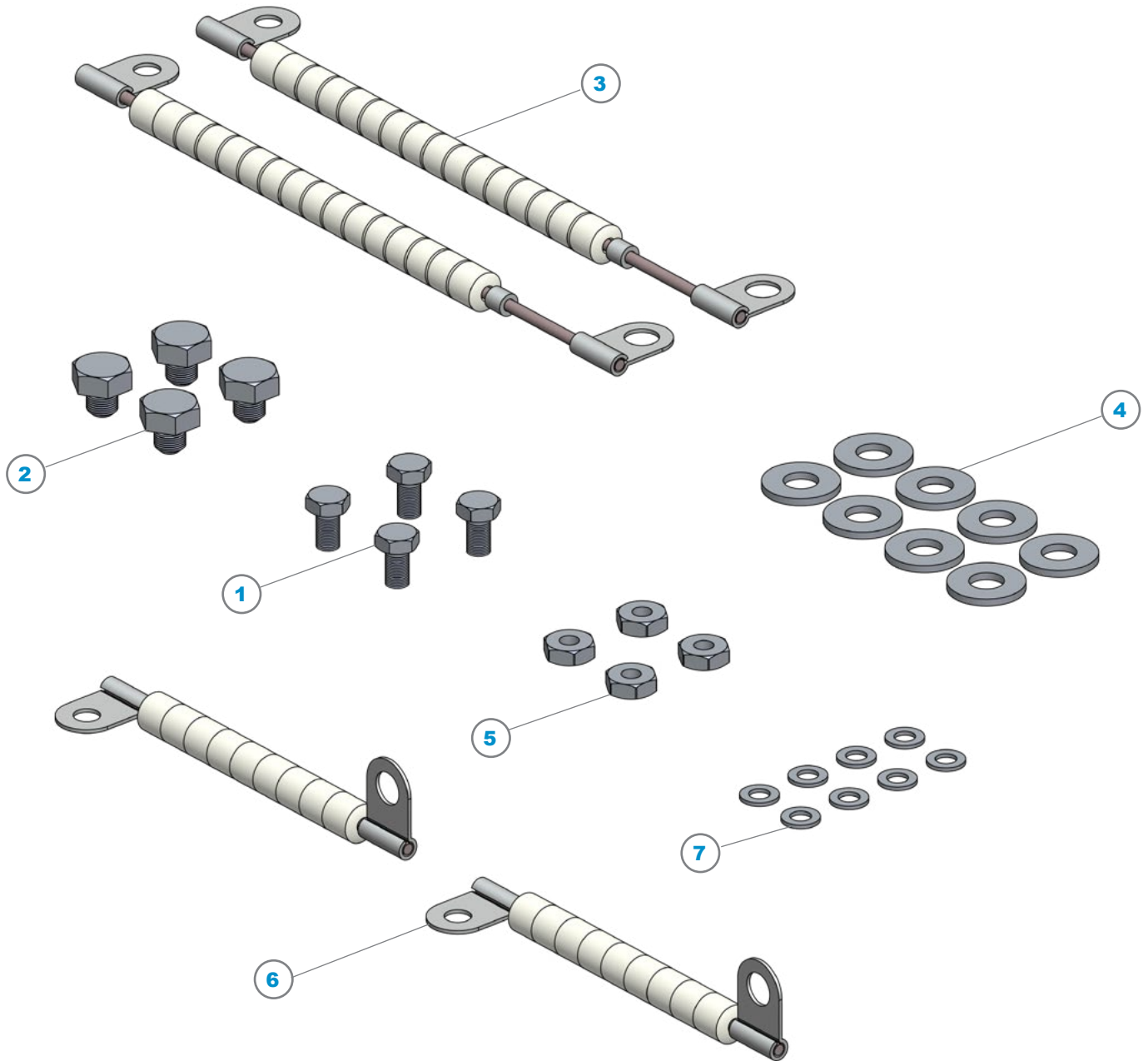
K97007



ITEM	P/N	DESCRIPTION	QTY
1	97043	Hex Head Bolt, 10-32, Nickel	4
2	97045	Cup, Screw Cover	4
3	97046	1/4-20 x .25" Long, Nickel, SHCS	4
4	97048A	Clamp, RF Strap	2
5	97049	1/4-20 x .50" Long, Nickel, SHCS	4
6	97050	RF Strap	2
7	97051	Clamp, Feed-Thru To RF Strap	2

C1/Sequel M06 Heater Strap Kit

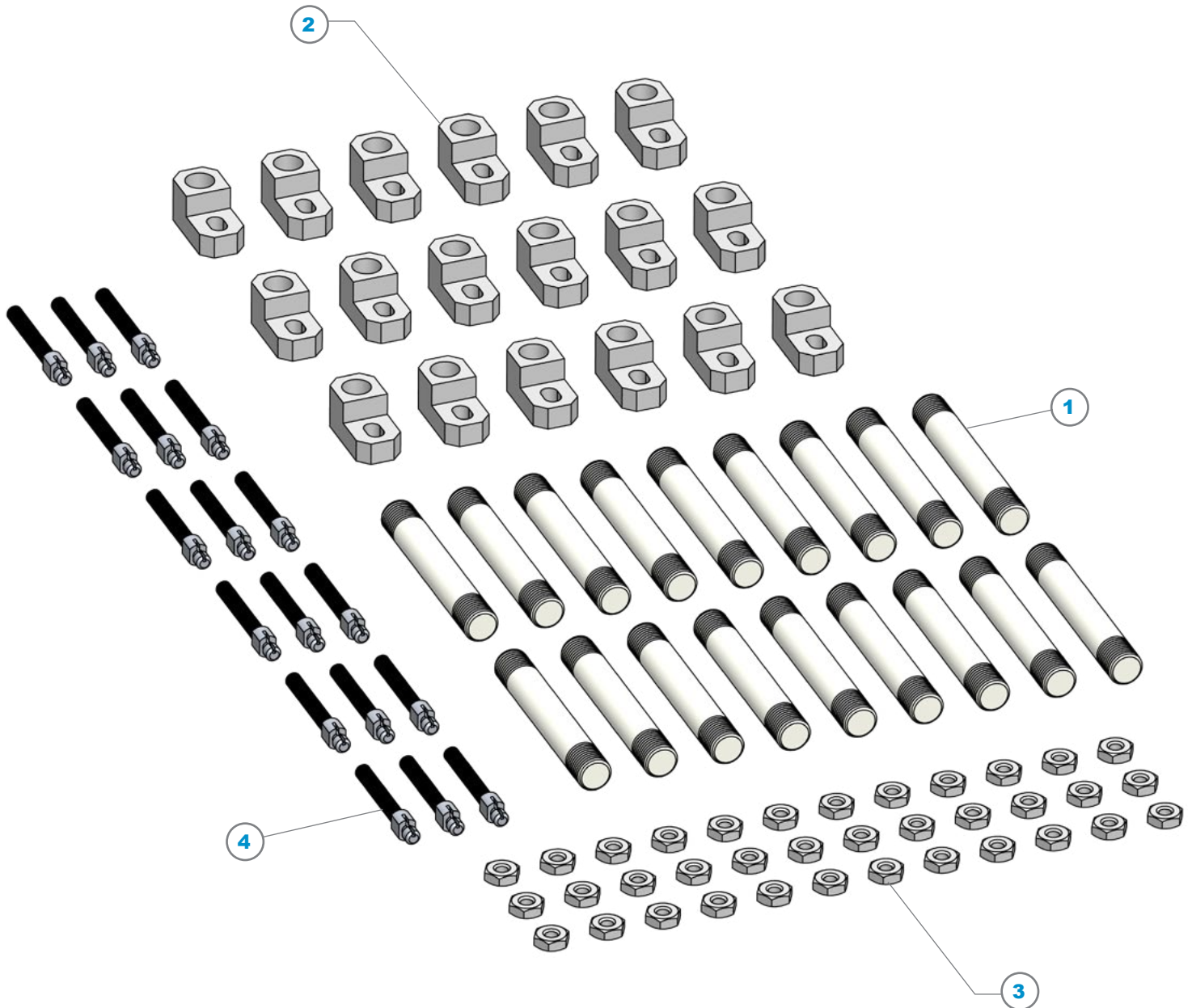
K97008



ITEM	P/N	DESCRIPTION	QTY
1	97001A	10-32 x .34" x .46" OAL, Nickel, Hex Head Bolt	4
2	97005	1/4-20 x .25" x .425" OAL, Nickel, Hex Head Bolt Screw	4
3	97006	Electrical Cable Assembly, Heater, Long	2
4	97019	.281" ID x .623" OD, Nickel, Washer, Flat	8
5	97020	10-32 x .190", Nickel, Hex Nut	4
6	97028	Electrical Cable Assembly, Heater, Short	2
7	97041	#8, Nickel, Washer, Flat	8

C1/Sequel M01 Shower Head Adjustment Kit

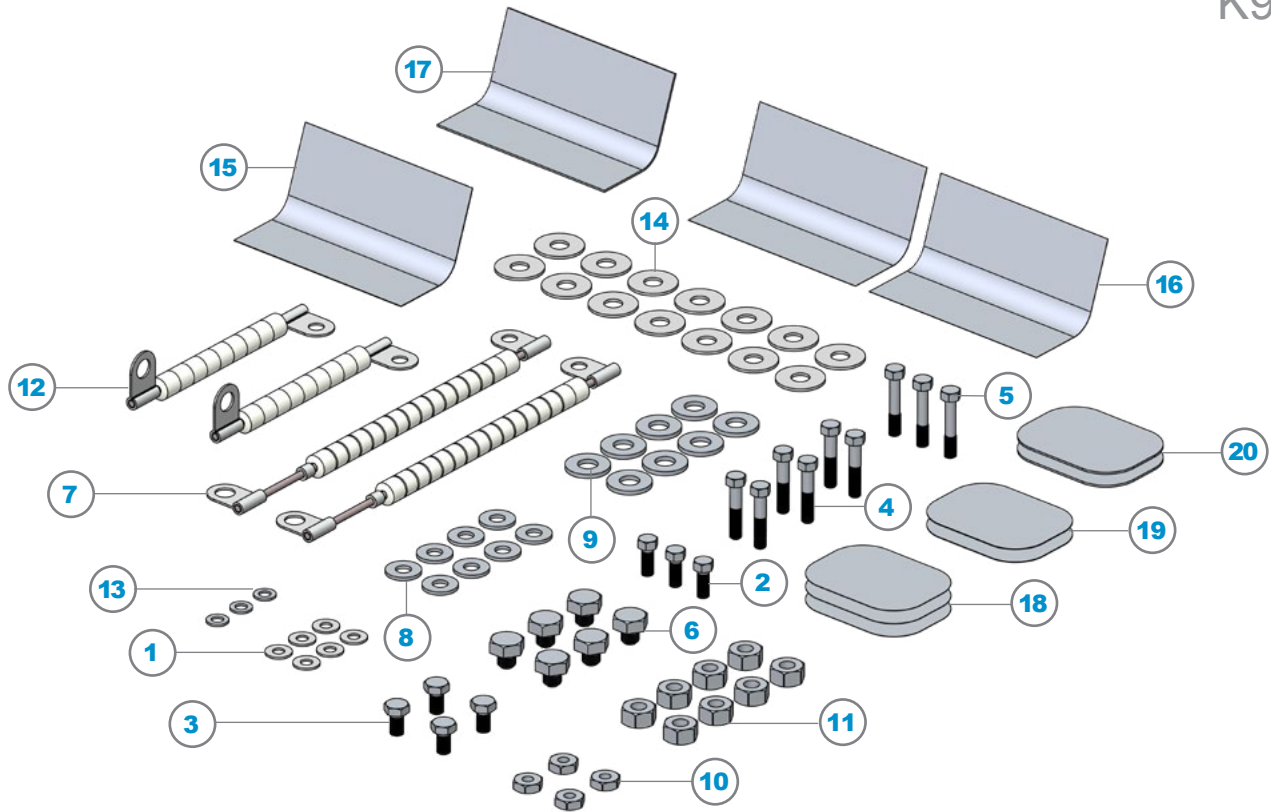
K97009



ITEM	P/N	DESCRIPTION	QTY
1	97011	Gas Plate Adjuster, Ceramic	18
2	97013	Nozzle Adjuster Guide	18
3	97055	8-32 x .164", Aluminum, Hex Nut	36
4	97057	1.50" Hanger, Nozzle, 200mm	18

C1/C2/Sequel M03 Heater Block Kit

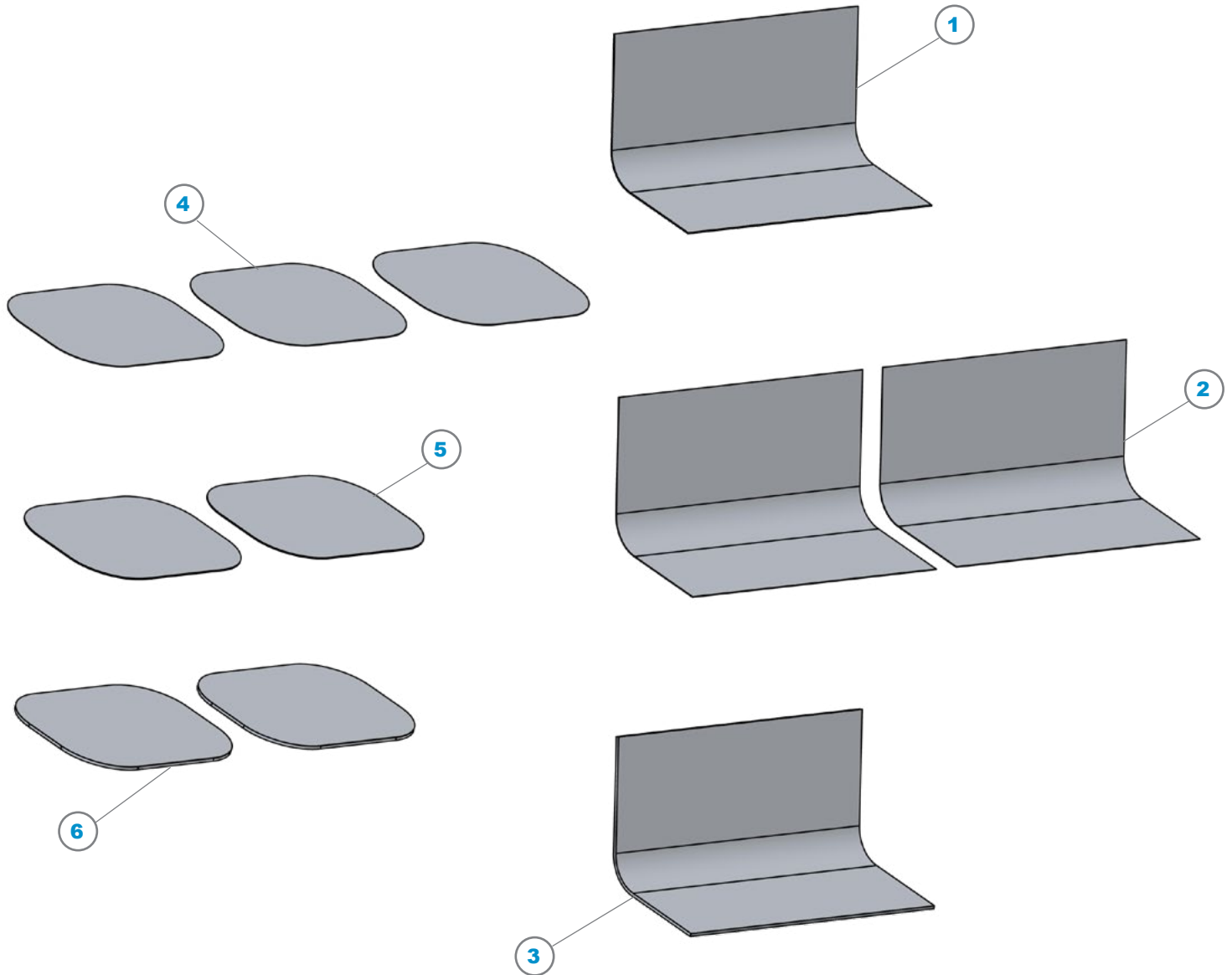
K97010



ITEM	P/N	DESCRIPTION	QTY
1	8A889	#8, .170" ID x .375" OD, Aluminum, Washer, Flat	6
2	97001	8-32 x .36", Nickel, Hex Head Bolt	3
3	97001A	10-32 x .34" x .46" OAL, Nickel, Hex Head Bolt	4
4	97002	8-32 x .83" x .96" OAL, Nickel, Hex Head Bolt	6
5	97003	8-32 x .164" x .890", Nickel, Hex Head Bolt	3
6	97005	1/4-20 x .25" x .425" OAL, Nickel, Hex Head Bolt Screw	6
7	97006	Electrical Cable Assembly, Heater, Long	2
8	97016	#10, .220" ID x .500" OD, Nickel, Washer, Flat	8
9	97019	.281" ID x .623" OD, Nickel, Washer, Flat	8
10	97020	10-32 x .190", Nickel, Hex Nut	4
11	97025	1/4-28, Nickel, Hex Nut	8
12	97028	Electrical Cable Assembly, Heater, Short	2
13	97041	#8, Nickel, Washer, Flat	3
14	97042	.266" ID x .687" OD, Aluminum, Washer, Flat	14
15	97104-1	Shim, Heater, .010, V-Type	1
16	97104-2	Shim, Heater, .005, V-Type	2
17	97104-3	Shim, Heater, .031, V-Type	1
18	97105-1	Shim, Heater, .005, Flat	3
19	97105-2	Shim, Heater, .010, Flat	2
20	97105-3	Shim, Heater, .031, Flat	2

C1/C2/Sequel M04 Heater Shim Kit

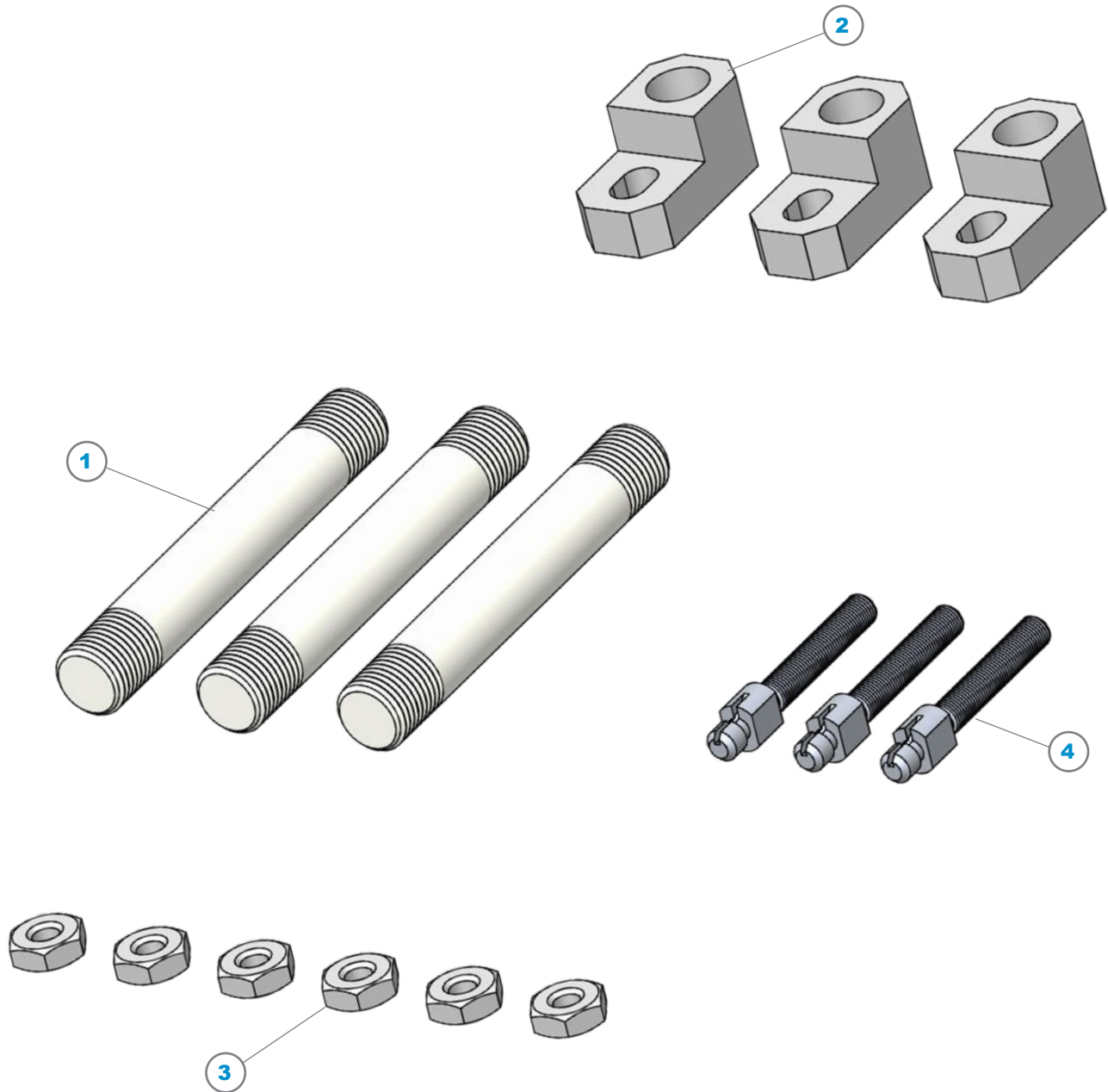
K97011



ITEM	P/N	DESCRIPTION	QTY
1	97104-1	Shim, Heater, .010, V-Type	1
2	97104-2	Shim, Heater, .005, V-Type	2
3	97104-3	Shim, Heater, .031, V-Type	1
4	97105-1	Shim, Heater, .005, Flat	3
5	97105-2	Shim, Heater, .010, Flat	2
6	97105-3	Shim, Heater, .031, Flat	2

C1/C2/Sequel M07 150mm Shower Head Kit

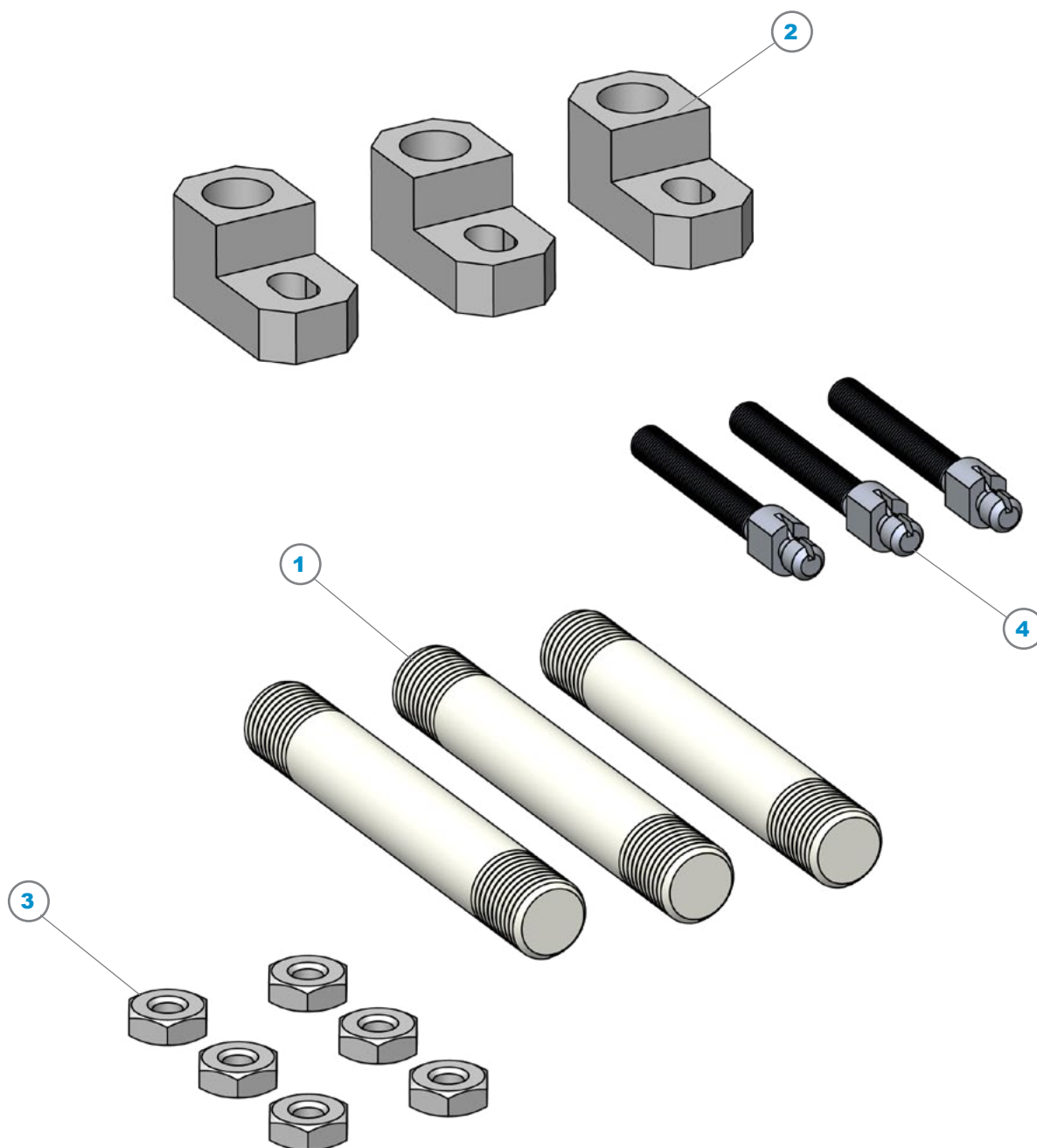
K97012



ITEM	P/N	DESCRIPTION	QTY
1	97011	Gas Plate Adjuster, Ceramic	3
2	97013	Nozzle Adjuster Guide	3
3	97055	8-32 x .164", Aluminum, Hex Nut	6
4	97057A	1.33" Hanger, Nozzle, 150mm	3

C1/C2/Sequel M08 200mm Shower Head Kit

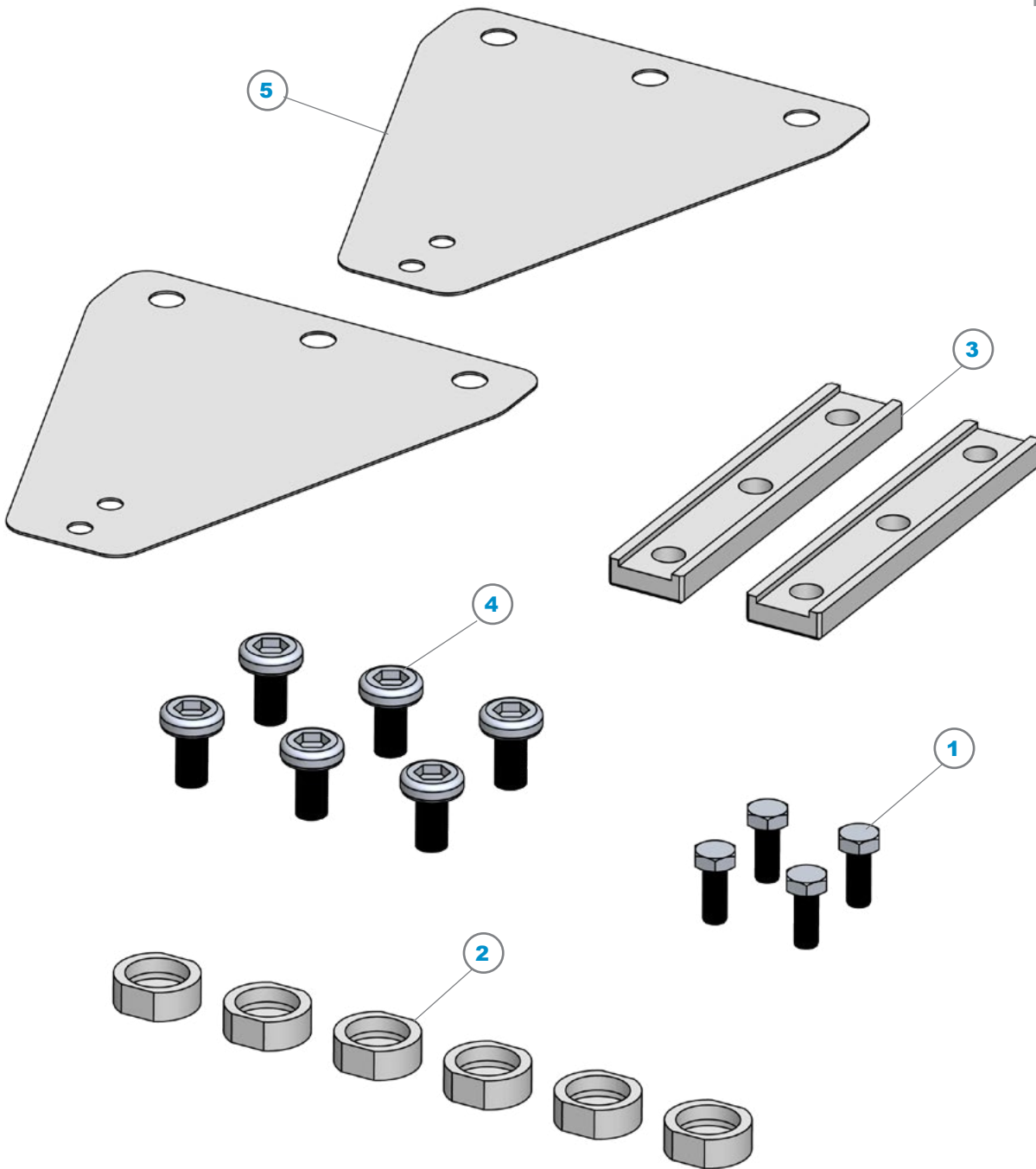
K97013



ITEM	P/N	DESCRIPTION	QTY
1	97011	Gas Plate Adjuster, Ceramic	3
2	97013	Nozzle Adjuster Guide	3
3	97055	8-32 x .164", Aluminum, Hex Nut	6
4	97057	1.50" Hanger, Nozzle, 200mm	3

C1/C2/Sequel RF Bottom Mount Straps, Clamps & Hardware Kit

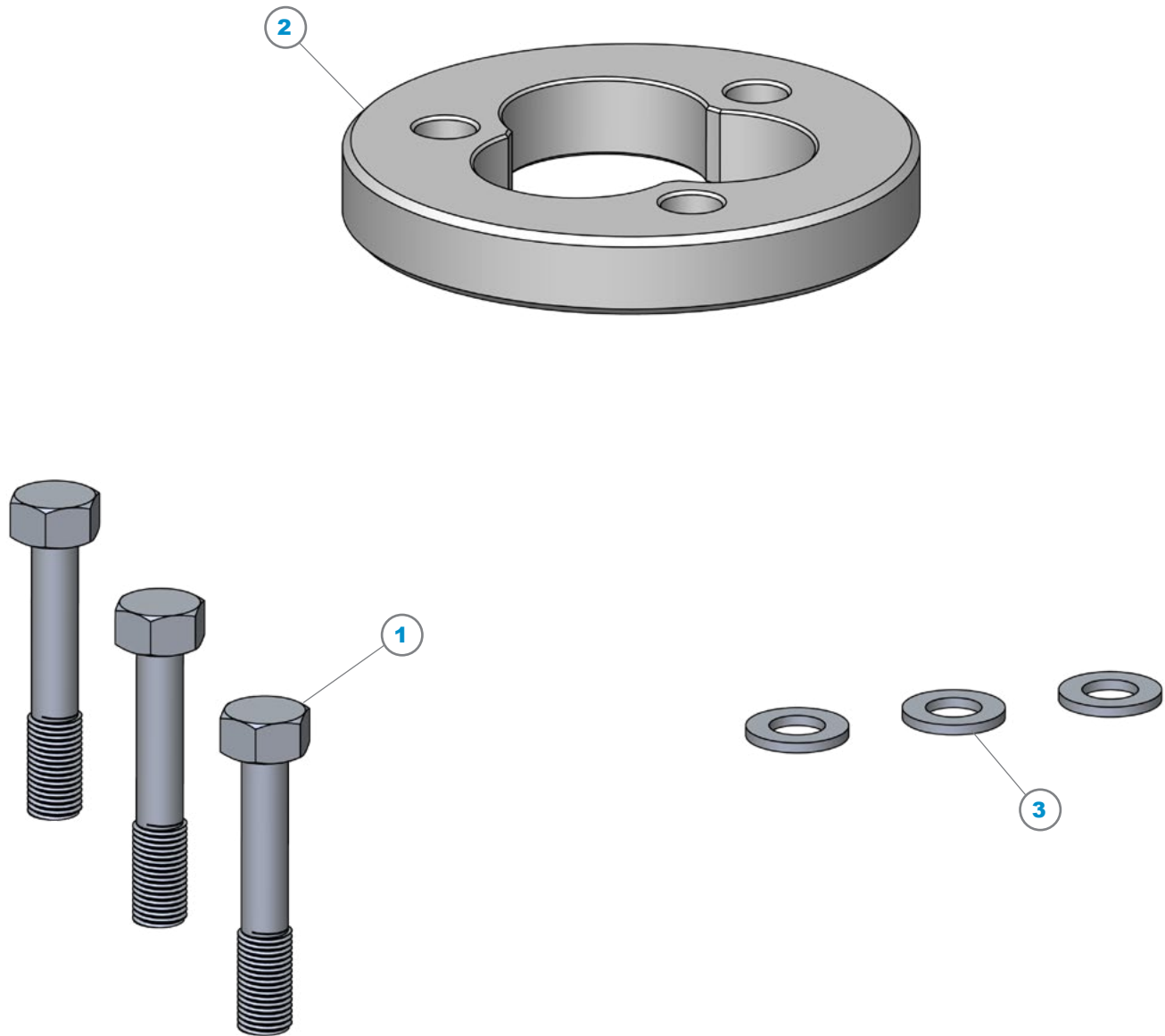
K97014



ITEM	P/N	DESCRIPTION	QTY
1	97043A	Hex Head Bolt, 10-32, Nickel, Modified	4
2	97045	Cup, Screw Cover	6
3	97048B	Clamp, RF Strap	2
4	97049	1/4-20 x .50" Long, Nickel, SHCS	6
5	97050B	RF Strap	2

C1/C2/Sequel Spindle Clamp Kit

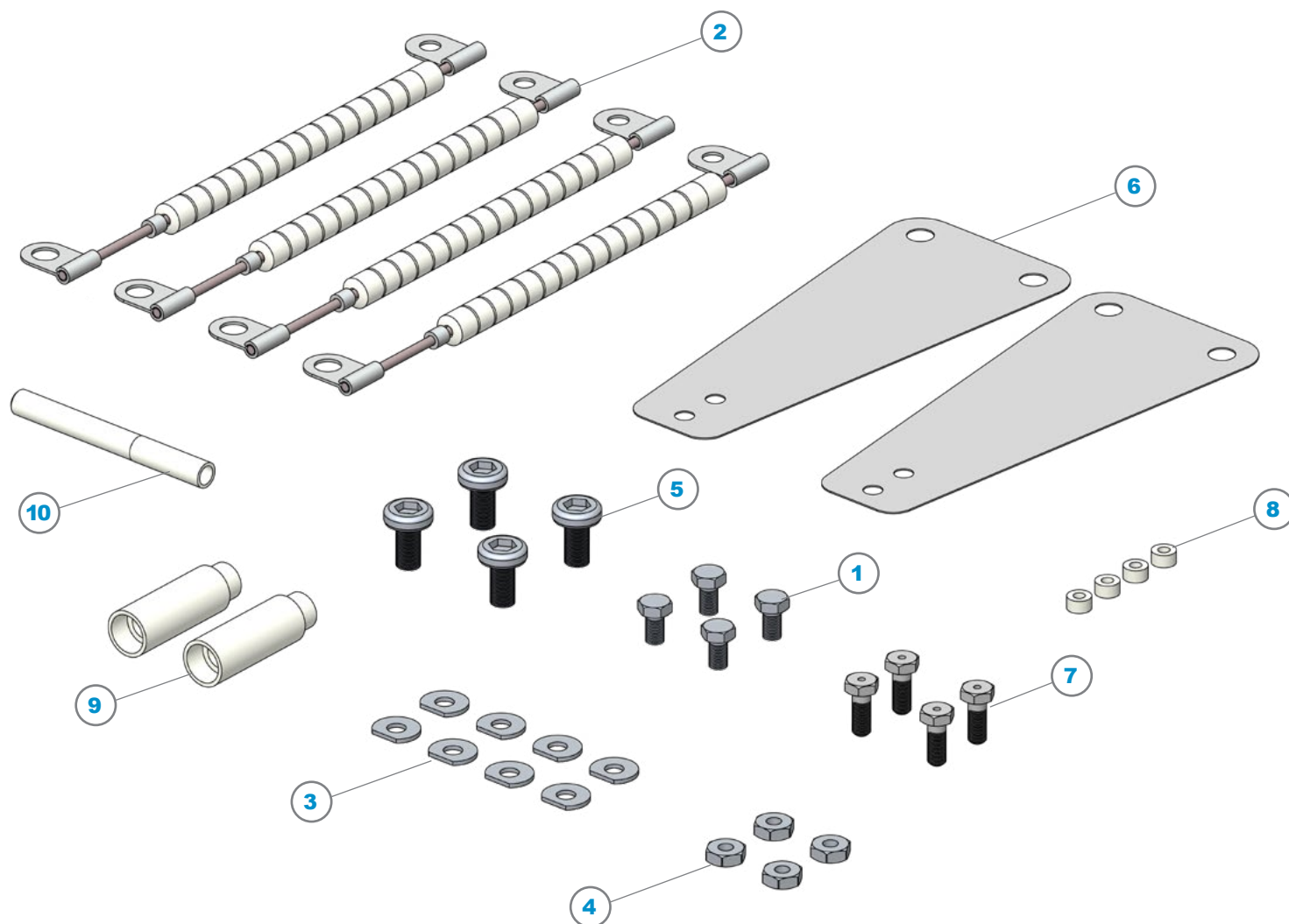
K97015



ITEM	P/N	DESCRIPTION	QTY
1	97003	8-32 x .164" x .890", Nickel, Hex Head Bolt	3
2	97037	Rotational Clamp, Aluminum	1
3	97041	#8, Nickel, Washer, Flat	3

C1/C2/Sequel Heater Block Kit

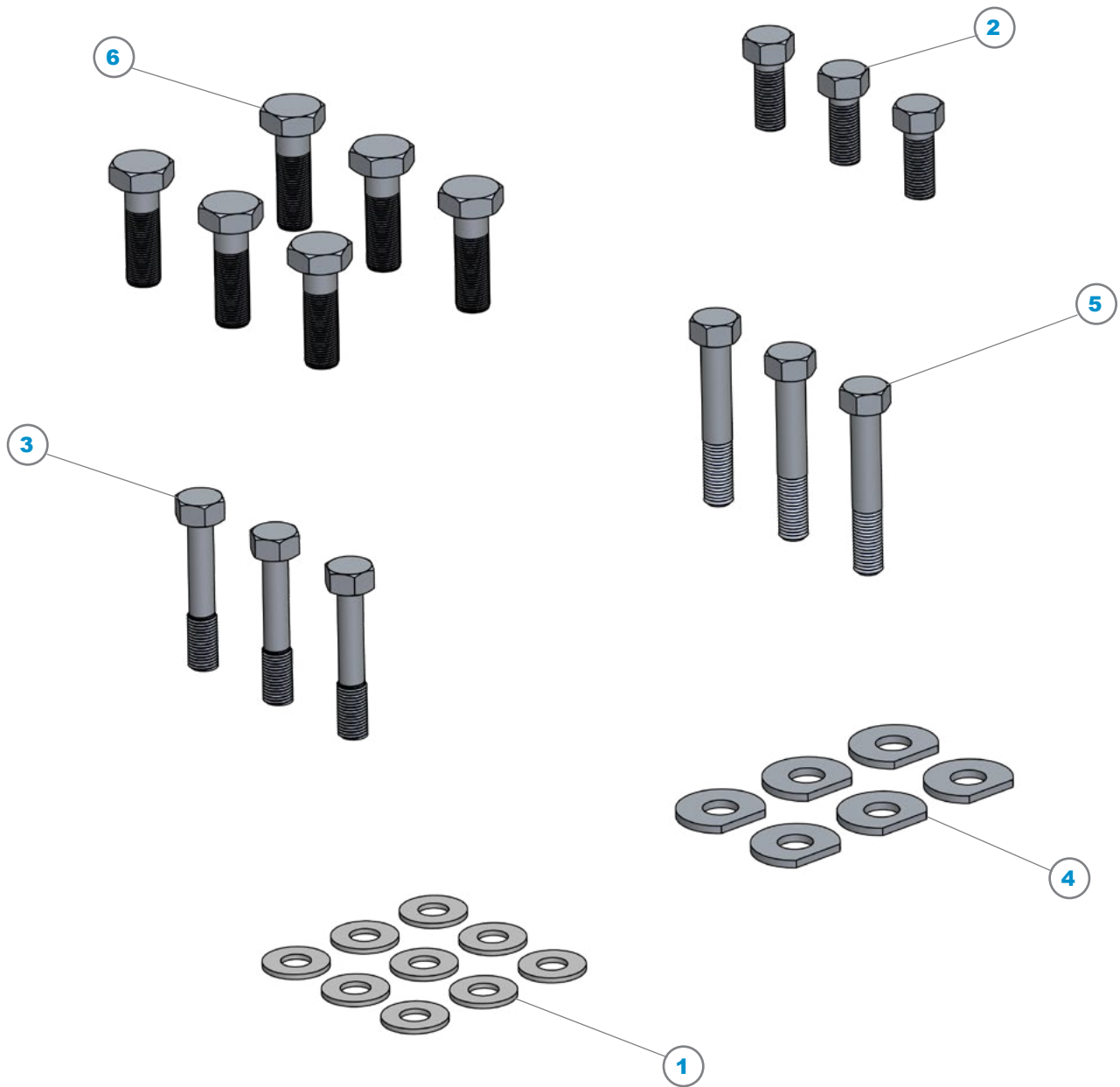
K97016



ITEM	P/N	DESCRIPTION	QTY
1	97001A	10-32 x .34" x .46" OAL, Nickel, Hex Head Bolt	4
2	97006	Electrical Cable Assembly, Heater, Long	4
3	97010	#10, with Flat, Nickel, Washer, Flat	8
4	97020	10-32 x .190", Nickel, Hex Nut	4
5	97049	1/4-20 x .50" Long, Nickel, SHCS	4
6	97050	RF Strap	2
7	97052	10-32 x .50", Nickel, Hex Head Screw, Vented	4
8	97064	Pin, Heater Block, Vented, Ceramic	4
9	97065	Sleeve, For Thermocouple, Ceramic	2
10	97066	1/8" ID Tube, For Thermocouple, Ceramic	1

C1/C2/Sequel Spindle Shaft Hardware Kit

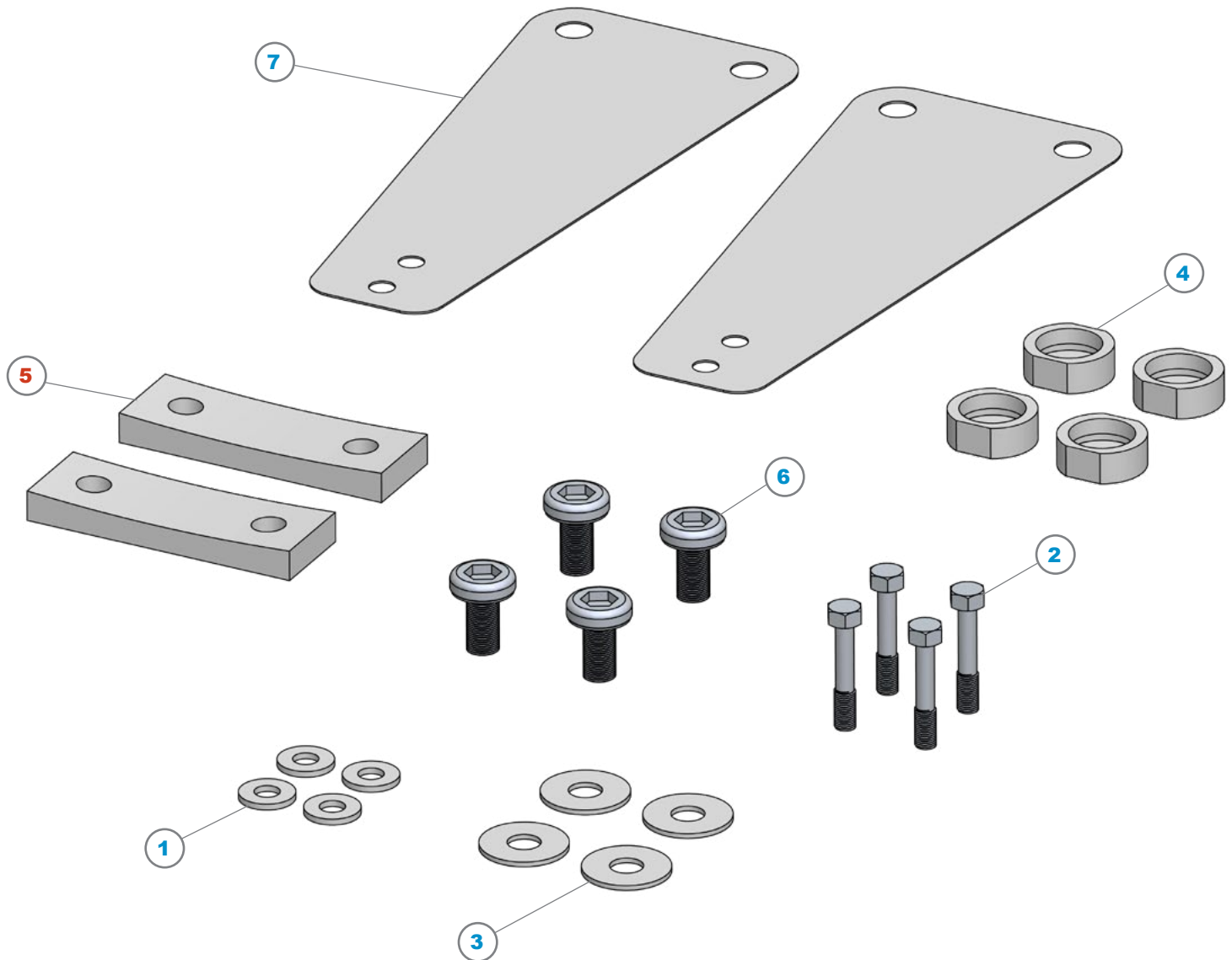
K97017



ITEM	P/N	DESCRIPTION	QTY
1	8A889	#8, .170" ID x .375" OD, Aluminum, Washer, Flat	9
2	97001	8-32 x .36", Nickel, Hex Head Bolt	3
3	97003	8-32 x .164" x .890", Nickel, Hex Head Bolt	3
4	97010	#10, with Flat, Nickel, Washer, Flat	6
5	97040	Hex Head Bolt, 8-32, Nickel	3
6	97043	Hex Head Bolt, 10-32, Nickel	6

C1/Sequel RF Hardware Kit

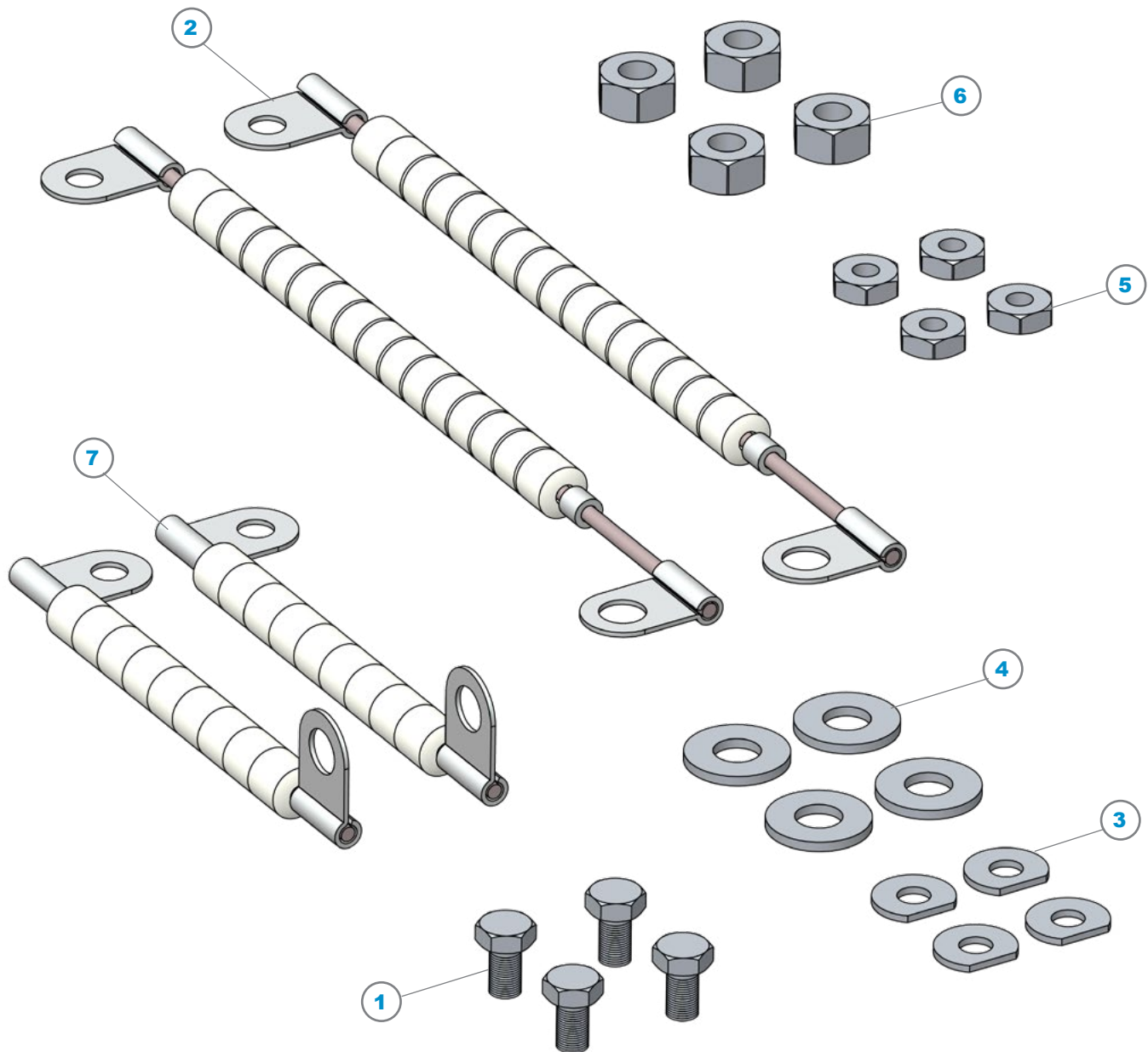
K97018



ITEM	P/N	DESCRIPTION	QTY
1	8A890	#10, .200" ID x .438" OD, Aluminum, Washer, Flat	4
2	97003	8-32 x .164" x .890", Nickel, Hex Head Bolt	4
3	97042	.266" ID x .687" OD, Aluminum, Washer, Flat	4
4	97045	Cup, Screw Cover	4
5	97048A	Clamp, RF Strap	2
6	97049	1/4-20 x .50" Long, Nickel, SHCS	4
7	97050	RF Strap	2

C1/Sequel Hardware, 97006 & 97028 Cables Kit

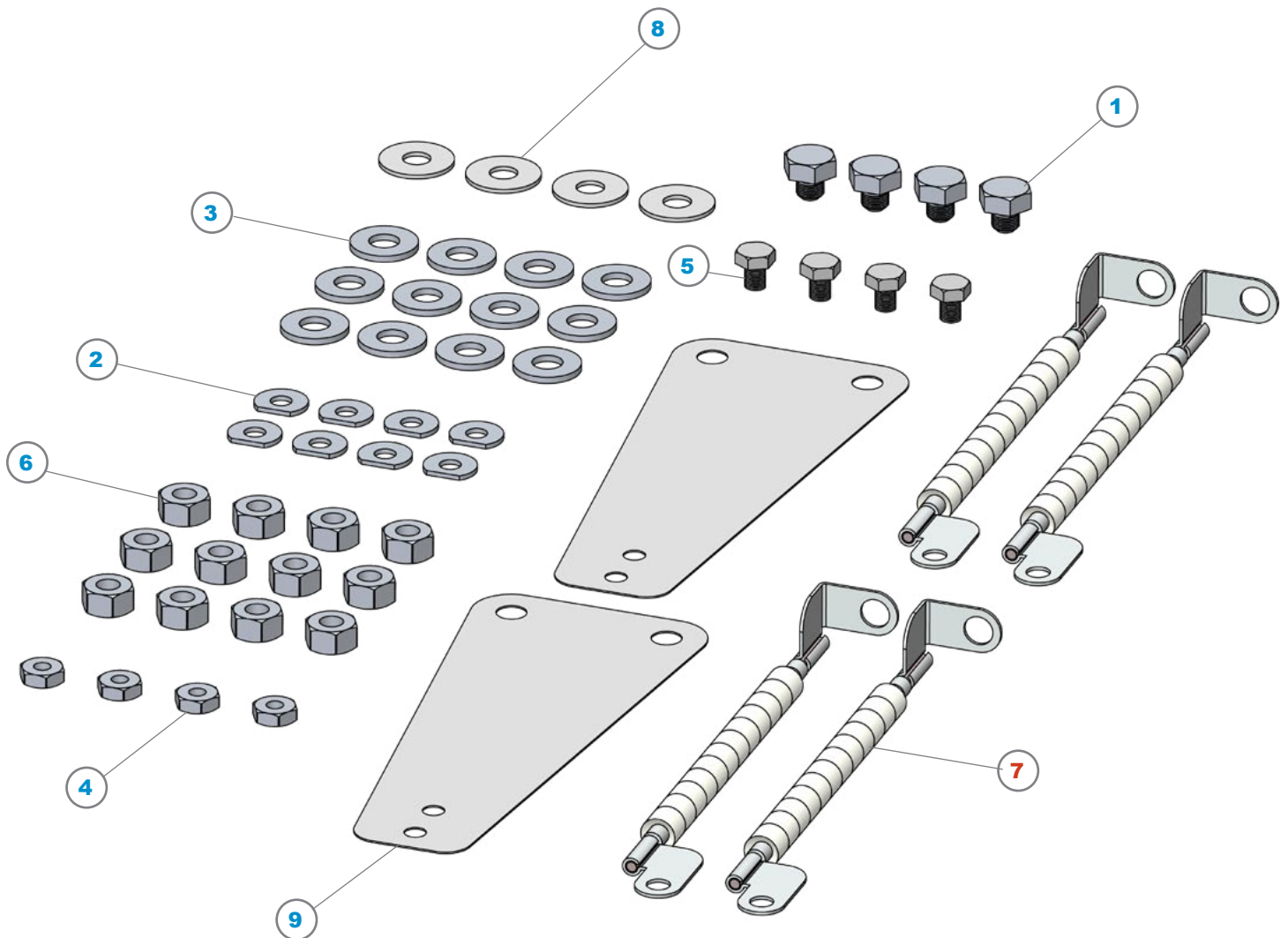
K97019



ITEM	P/N	DESCRIPTION	QTY
1	97001A	10-32 x .34" x .46" OAL, Nickel, Hex Head Bolt	4
2	97006	Electrical Cable Assembly, Heater, Long	2
3	97010	#10, with Flat, Nickel, Washer, Flat	4
4	97019	.281" ID x .623" OD, Nickel, Washer, Flat	4
5	97020	10-32 x .190", Nickel, Hex Nut	4
6	97025	1/4-28, Nickel, Hex Nut	4
7	97028	Electrical Cable Assembly, Heater, Short	2

C1/Sequel PM Dual Frequency 97028B Cables Kit

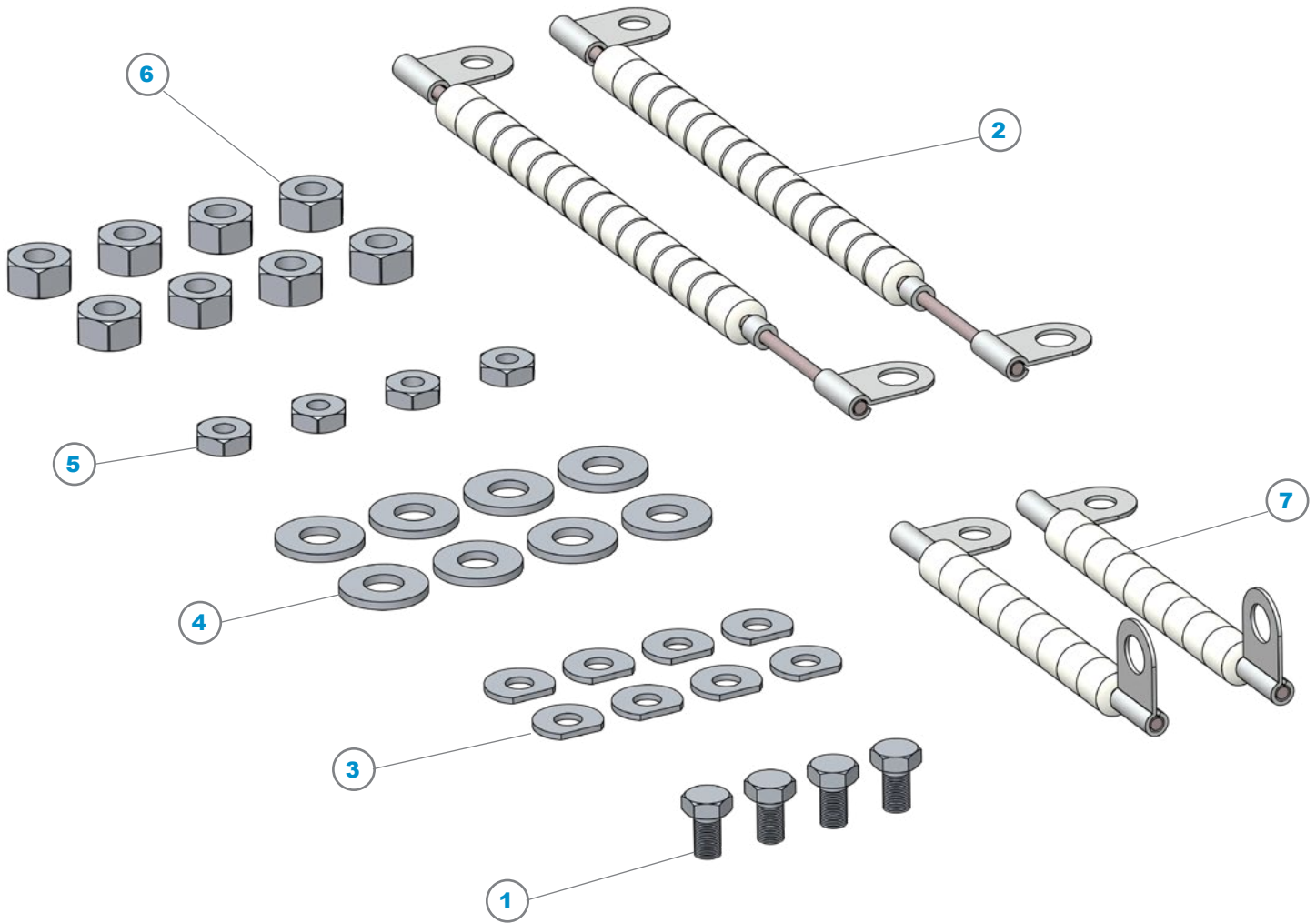
K97020



ITEM	P/N	DESCRIPTION	QTY
1	97005	1/4-20 x .25" x .425" OAL, Nickel, Hex Head Bolt Screw	4
2	97010	#10, with Flat, Nickel, Washer, Flat	8
3	97019	.281" ID x .623" OD, Nickel, Washer, Flat	12
4	97020	10-32 x .190", Nickel, Hex Nut	4
5	97021	10-32 x .25", Nickel, Hex Head Screw	4
6	97025	1/4-28, Nickel, Hex Nut	12
7	97028B	Electrical Cable Assembly	4
8	97042	.266" ID x .687" OD, Aluminum, Washer, Flat	4
9	97050	RF Strap	2

C1/Sequel #2 Heater Strap Kit

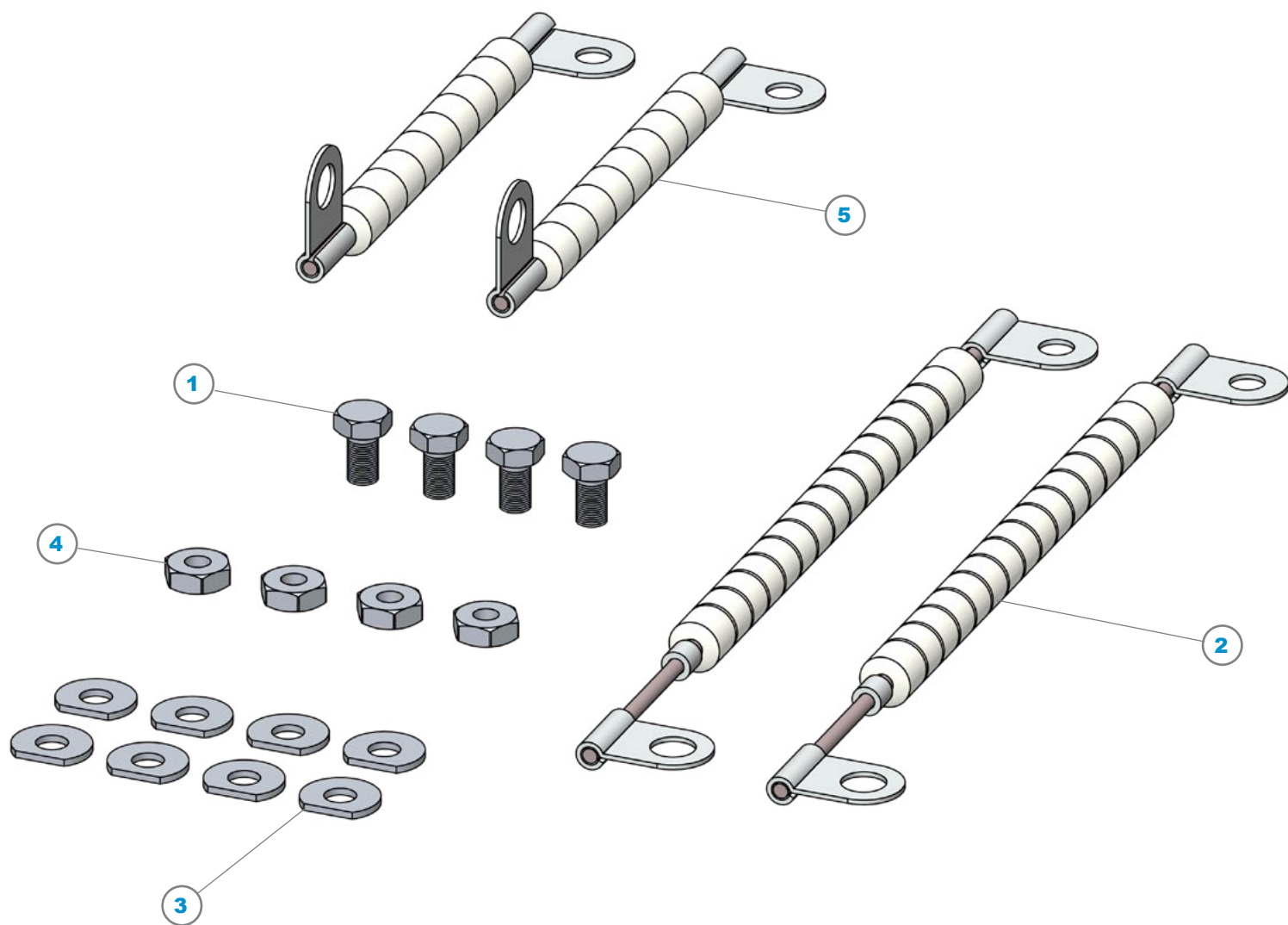
K97021



ITEM	P/N	DESCRIPTION	QTY
1	97001A	10-32 x .34" x .46" OAL, Nickel, Hex Head Bolt	4
2	97006	Electrical Cable Assembly, Heater, Long	2
3	97010	#10, with Flat, Nickel, Washer, Flat	8
4	97019	.281" ID x .623" OD, Nickel, Washer, Flat	8
5	97020	10-32 x .190", Nickel, Hex Nut	4
6	97025	1/4-28, Nickel, Hex Nut	8
7	97028	Electrical Cable Assembly, Heater, Short	2

C1/Sequel #1 Heater Strap Kit

K97022

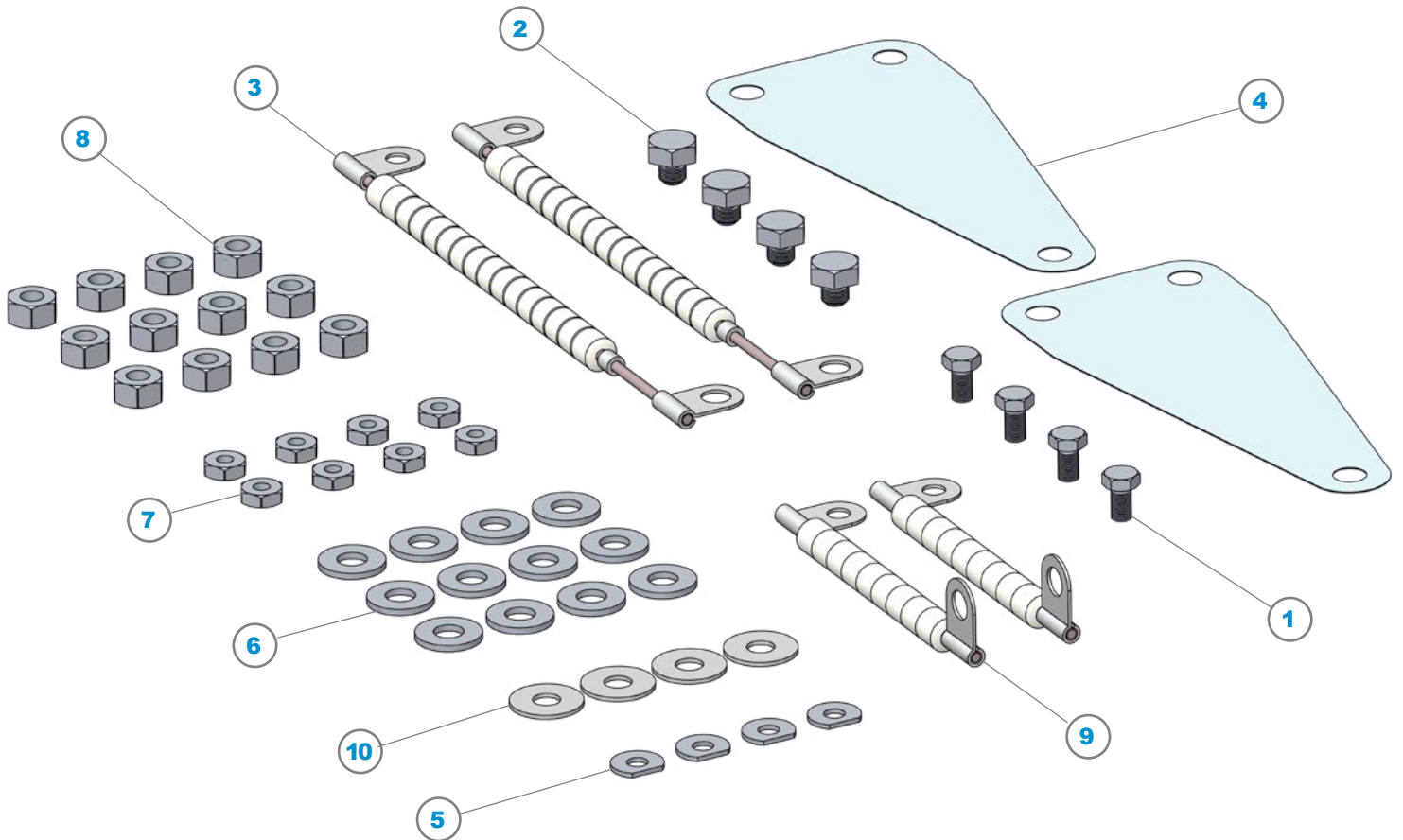


ITEM	P/N	DESCRIPTION	QTY
1	97001A	10-32 x .34" x .46" OAL, Nickel, Hex Head Bolt	4
2	97006	Electrical Cable Assembly, Heater, Long	2
3	97010	#10, with Flat, Nickel, Washer, Flat	8
4	97020	10-32 x .190", Nickel, Hex Nut	4
5	97028	Electrical Cable Assembly, Heater, Short	2



C1/Sequel PM Dual Frequency 97006 & 97028 Cables Kit

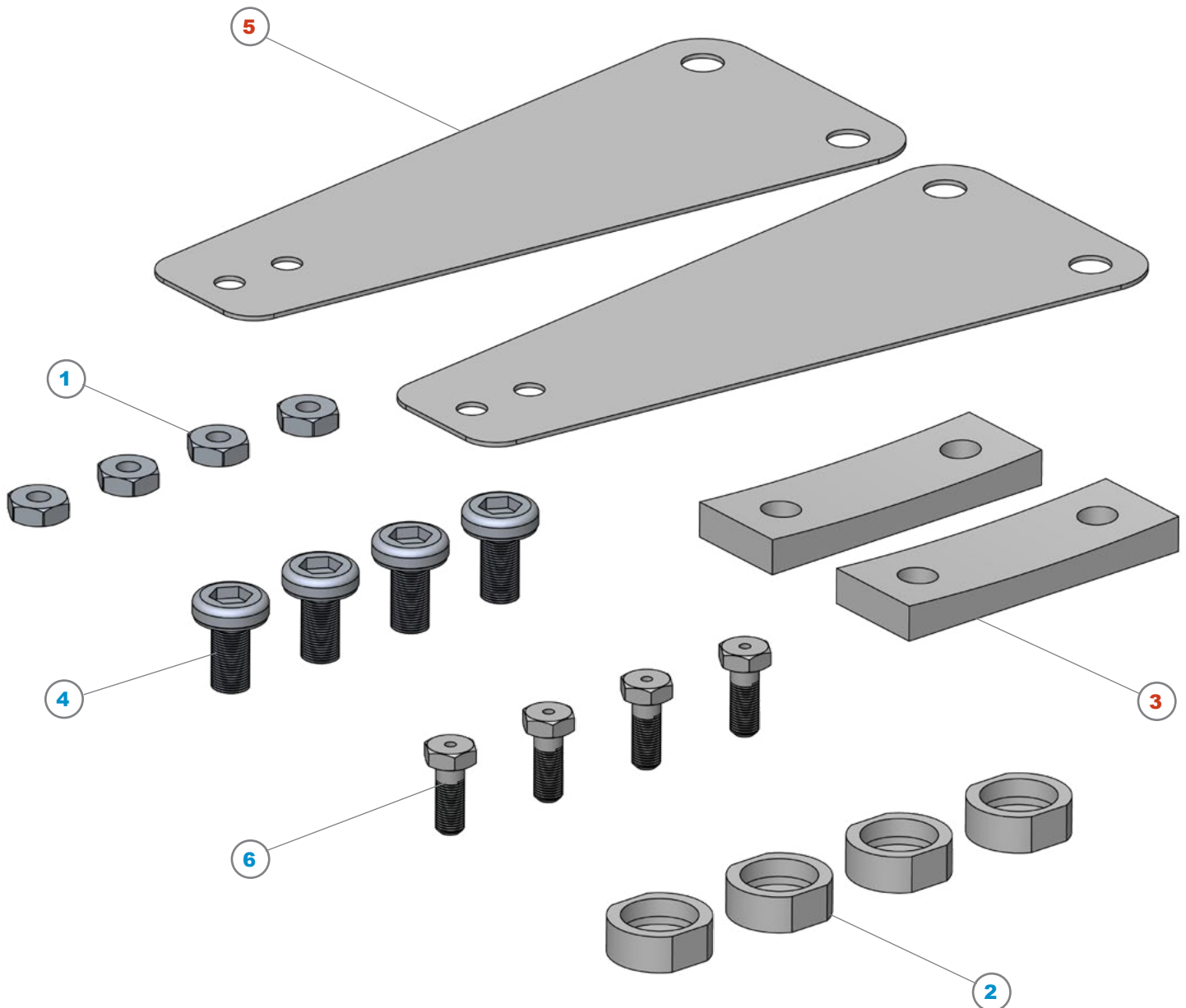
K97028



ITEM	P/N	DESCRIPTION	QTY
1	97001A	10-32 x .34" x .46" OAL, Nickel, Hex Head Bolt	4
2	97005	1/4-20 x .25" x .425" OAL, Nickel, Hex Head Bolt Screw	4
3	97006	Electrical Cable Assembly, Heater, Long	2
4	97007	Flat Strap, Aluminum	2
5	97010	#10, with Flat, Nickel, Washer, Flat	4
6	97019	.281" ID x .623" OD, Nickel, Washer, Flat	12
7	97020	10-32 x .190", Nickel, Hex Nut	8
8	97025	1/4-28, Nickel, Hex Nut	12
9	97028	Electrical Cable Assembly, Heater, Short	2
10	97042	.266" ID x .687" OD, Aluminum, Washer, Flat	4

C1/Sequel RF Strap Kit

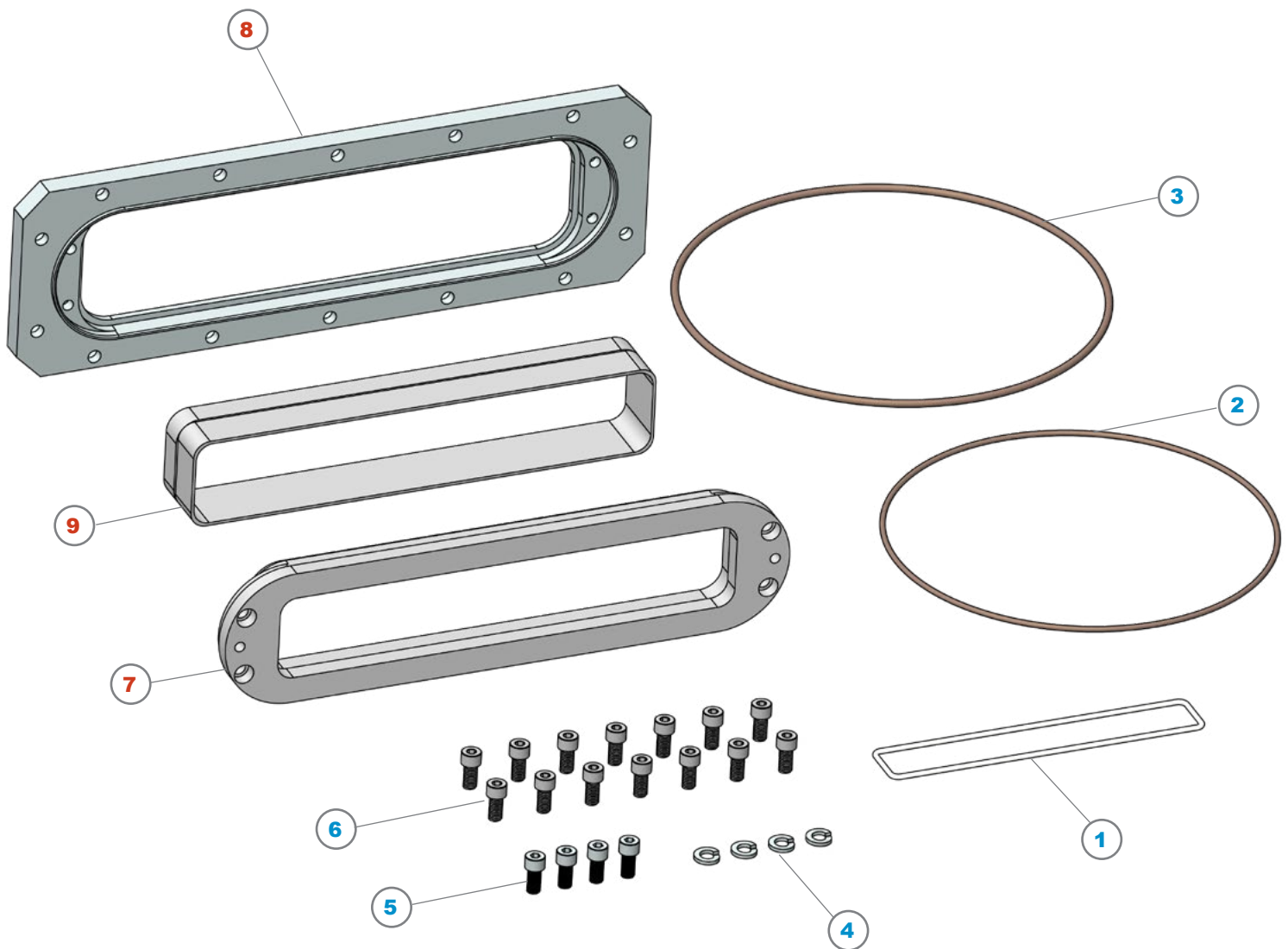
K97050



ITEM	P/N	DESCRIPTION	QTY
1	97020	10-32 x .190", Nickel, Hex Nut	4
2	97045	Cup, Screw Cover	4
3	97048A	Clamp, RF Strap	2
4	97049	1/4-20 x .50" Long, Nickel, SHCS	4
5	97050A	RF Strap, Modified, .032" Thick	2
6	97052	10-32 x .50", Nickel, Hex Head Screw, Vented	4

Speed MESC Flange Insert & Liner Retrofit Kit

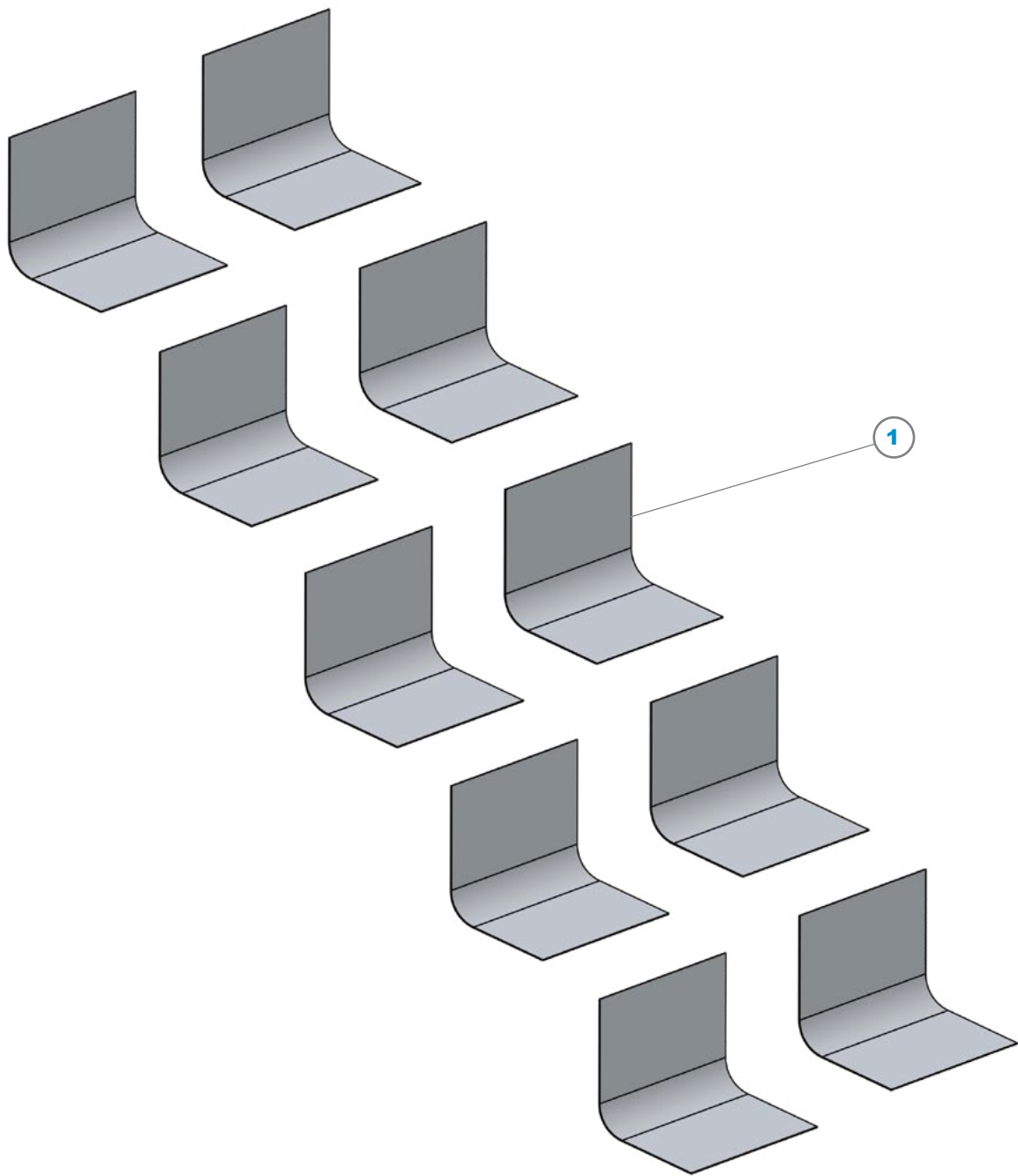
K97100



ITEM	P/N	DESCRIPTION	QTY
1	8A939C	E/38, Split, White, Rectangular, O-Ring	1
2	8A939V	-168, Viton, Brown, 50 Duro, O-Ring	1
3	8B061V	-266, Viton, Brown, 50 Duro, O-Ring	1
4	8B062	.260" ID x .363" OD, SS, Washer, Split, Lock	4
5	8B063	1/4-28 x .50", Nickel Plated SS, SHCS, Vented	4
6	8B064	1/4-20 x .50", SS, SHCS, Low Profile	14
7	97099C	Insert, MESC Flange, Modified, Aluminum	1
8	97100	Insert, Split, Outer	1
9	97102	Liner, MESC Flange Insert, Aluminum	1

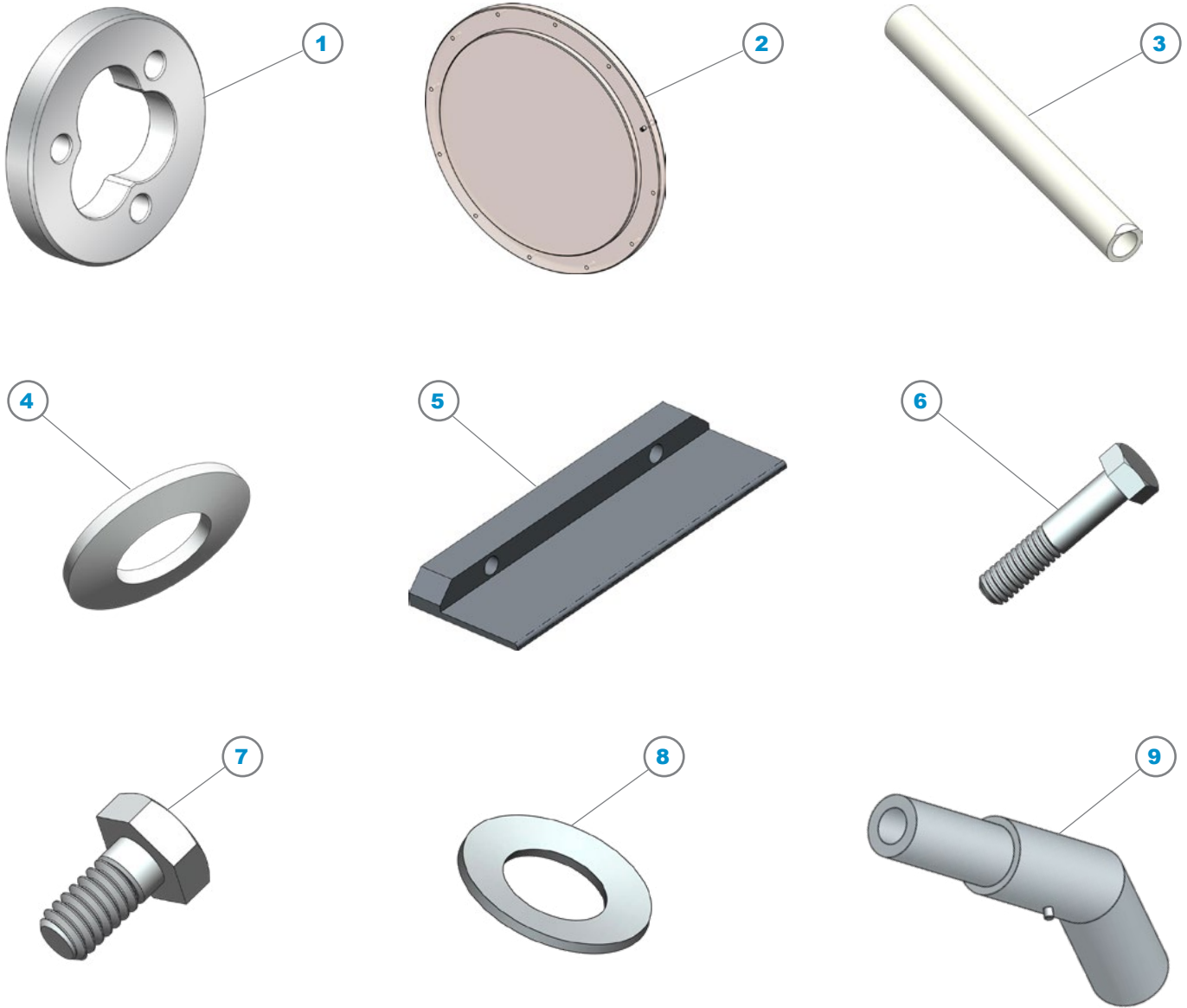
C1/Sequel .010 V-Type Shim Kit

K97104



ITEM	P/N	DESCRIPTION	QTY
1	97104	Shim, V-Type, 0.010	10

C1/Altus/Sequel Miscellaneous Components



ITEM	P/N	DESCRIPTION
1	97037	Rotational Clamp, Aluminum
2	97074	Window, Hatch, TM Cover
3	97107	4.13" Long, Tube, Injector, Hi-Purity
4	97111	#8, Nickel, Washer, Belleville
5	97112	Blade, Wafer Placement
6	97121	8-32 x .80", Nickel, Hex Head Bolt
7	97124	1/4-20 x .50", Nickel, Hex Head Screw
8	97125	1/4", Nickel, Washer, Belleville
9	97126	Holder Tube Assembly