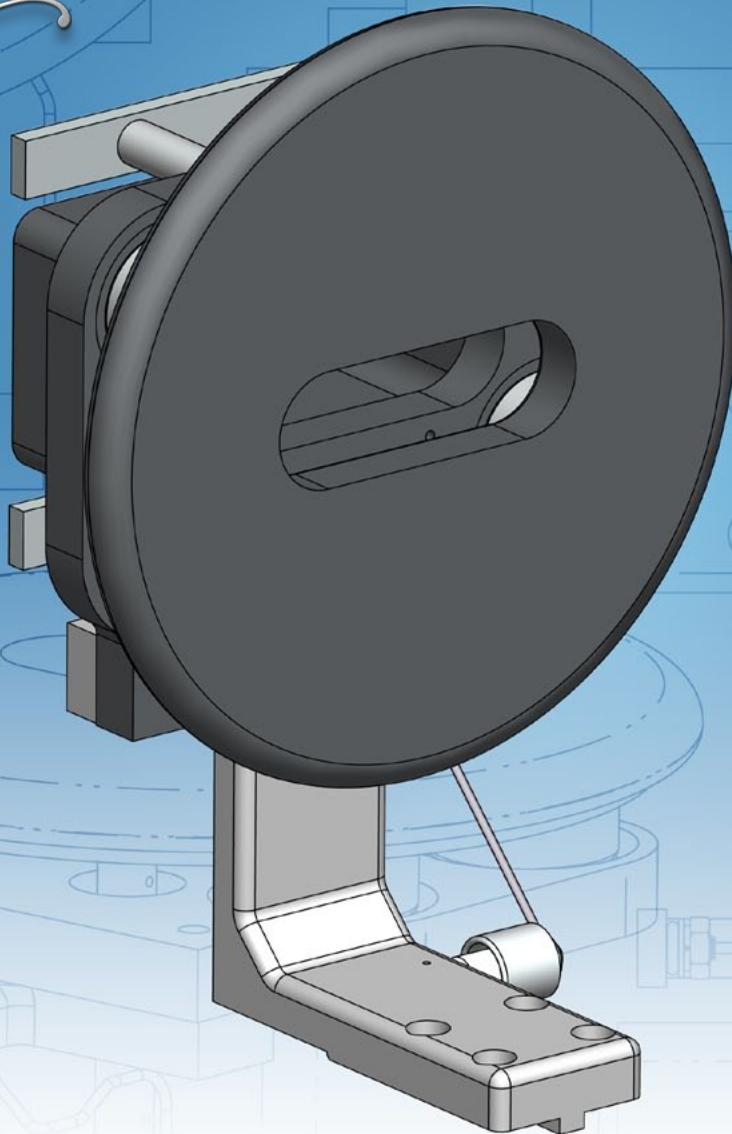




A Resource for Semiconductor Manufacturers



HE3 Post Accel Extraction Electrode Upgrades for **GSD Implanter Systems**

Glemco improves the HE3 Post Accel Extraction Electrode through construction that enhances production and increases efficiency with these developments...

- **Greater Protection**
Increased shielding of the power feed-through.
- **Enhanced Design**
Improved isolation of the suppression aperture.
- **Better Productivity**
Reduced arcing and extended PM frequency.



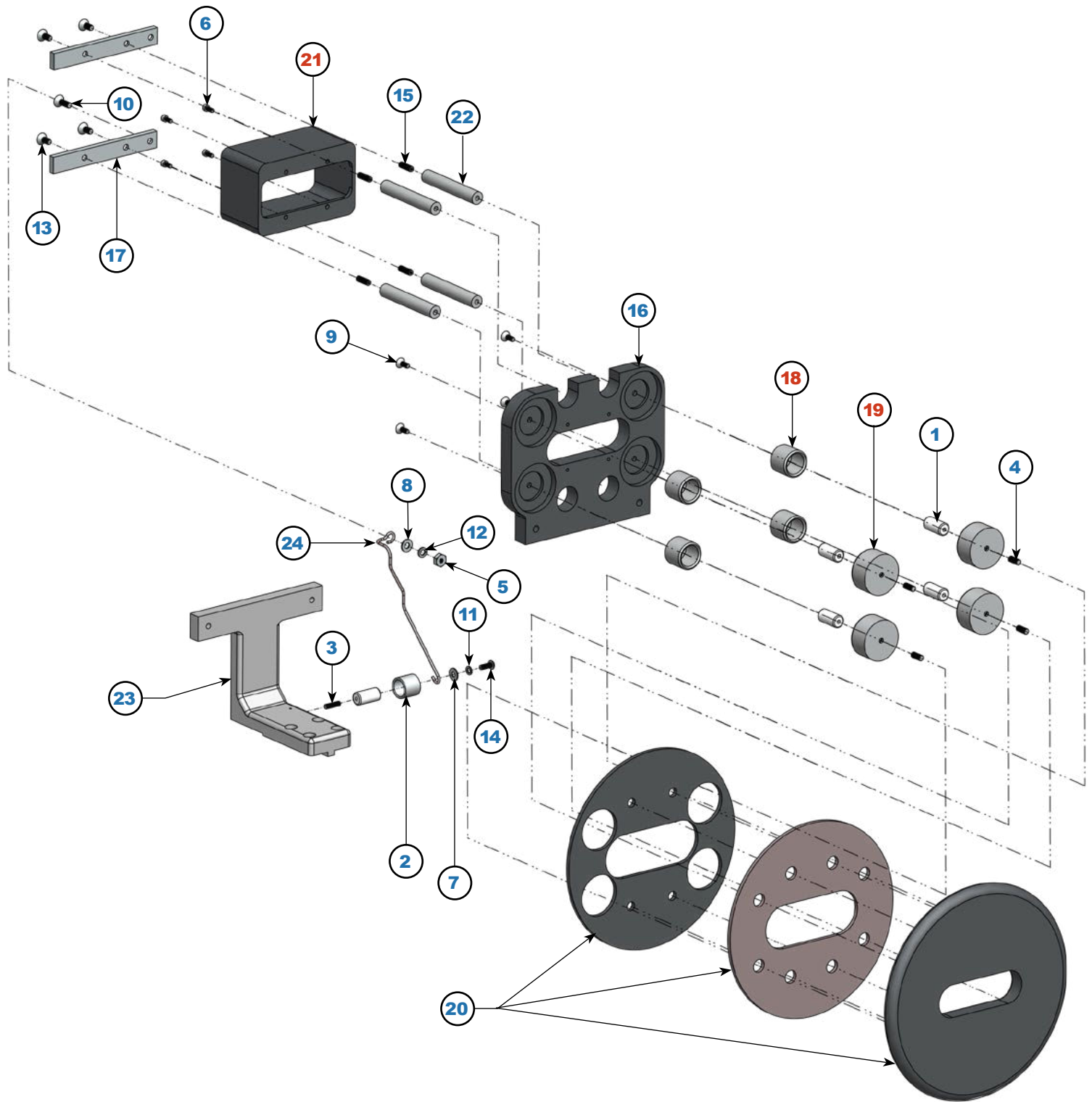
A Resource for Semiconductor Manufacturers

PO Box 217 Leander, TX USA 78646-0217 • 800-621-9598 • sales@glemco.com • www.glemco.com

Glemco® - Any unauthorized use and/or duplication of any material from this brochure without express and written permission from Glemco is strictly prohibited.

Glemco Modified Design

HE3 Post Accel Extraction Electrode Components



* Glemco offers improvements, modifications, or alternatives to standard OEM replacement components as indicated in red.



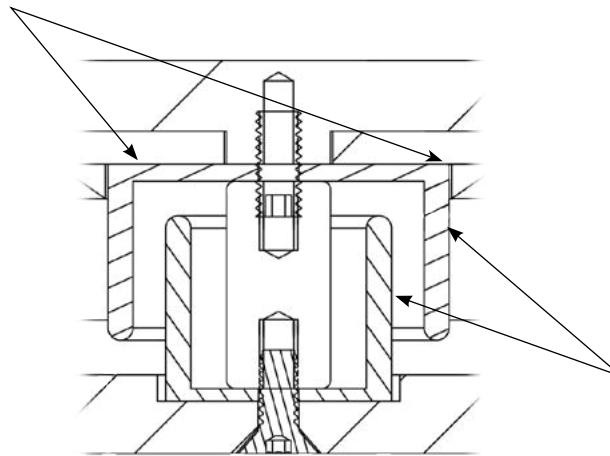
A Resource for Semiconductor Manufacturers

PO Box 217 Leander, TX USA 78646-0217 • 800-621-9598 • sales@glemco.com • www.glemco.com

Glemco® - Any unauthorized use and/or duplication of any material from this brochure without express and written permission from Glemco is strictly prohibited.

HE3 Post Accel Extraction Electrode Components

The enhanced graphite ground plate is thicker and pocketed to accommodate longer inner shields.



Longer cup and insulator design improves isolation of suppression aperture.

Item	P/N	Description	OEM	Qty
1	30680	Ceramic Standoff, Ø 3/8" X 3/4" Long	7230-0003-0014	5
2	30710	Aluminum Cup	7103-0008-2001	1
3	82119	Set Screw, 6-32 X 1/2", .138 X .500, SST	4400082	1
4	82126	Set Screw, 8-32 X 3/8", .164 X .375, SST	1236200808	4
5	82298	Nut, Hex, 8-32, .164, SST	4400029, 5053-0002-0082	1
6	82385	SHCS, Socket Head Cap Screw, 4-40 X 1/4", .112 X .250, SST	1236200403, 4400194	4
7	82470	Washer, Flat, #6, .149 ID, .375 OD, .025 Thick, SST	1412200600, 4400760	1
8	82474	Washer, Flat, Standard, #8, .171 ID, .375 OD, .032 Thick, SST	4400498, 8462-0004-0807	1
9	82587	FHSS, Flat Head Socket Screw, 6-32 3/8", .138 X .375, SST	No OEM Reference	4
10	82589	FHSS, Flat Head Socket Screw, 8-32 1/2", .164 X .500, SST	6971-0004-7208	1
11	82606	Washer, Lock, Split, #6, .148 ID, .250 OD, .031 Thick, SST	4400034, 8465-0002-0062	1
12	82609	Washer, Lock, Regular Spring, #8, .040" X .174" ID X .293" OD, SST	4400062	1
13	8A217	FHSS, Flat Head Socket Screw, 8-32 X 3/8", .164 X .375, SST	4400024	4
14	8A257	VBHSS, Vented Button Head Socket Screw, 6-32 X 3/8", SST	E47000192	1
15	8A387	VSS, Vented Set Screw, 8-32 x 1/2", .164 X .500, SST	4400664	4
16	99030D	Single Gas Ground Electrode Plate	No OEM Reference	1
17	99137	Bar	1701730	2
18	99138C	Small Cup, Extended, SST	1711262(MOD)	4
19	99139A	Large Cup, Extended, SST	1711261(MOD)	4
20	99181D	Tungsten Reinforced Aperture	No OEM Reference	1
21	99473A	Post Accel Aperture Block, Modified, Graphite	17122980(MOD)	1
22	99582A	Electrode Standoff	1712391	4
23	99898	Post Accel Head Mounting Bracket	11028480	1
24	99915	Suppression Wire, Tantalum	No OEM Reference	1

Contact us at sales@glemco.com

Order online at www.glemco.com

* Glemco offers improvements, modifications, or alternatives to standard OEM replacement components as indicated in red.



A Resource for Semiconductor Manufacturers

PO Box 217 Leander, TX USA 78646-0217 • 800-621-9598 • sales@glemco.com • www.glemco.com

Glemco® - Any unauthorized use and/or duplication of any material from this brochure without express and written permission from Glemco is strictly prohibited.