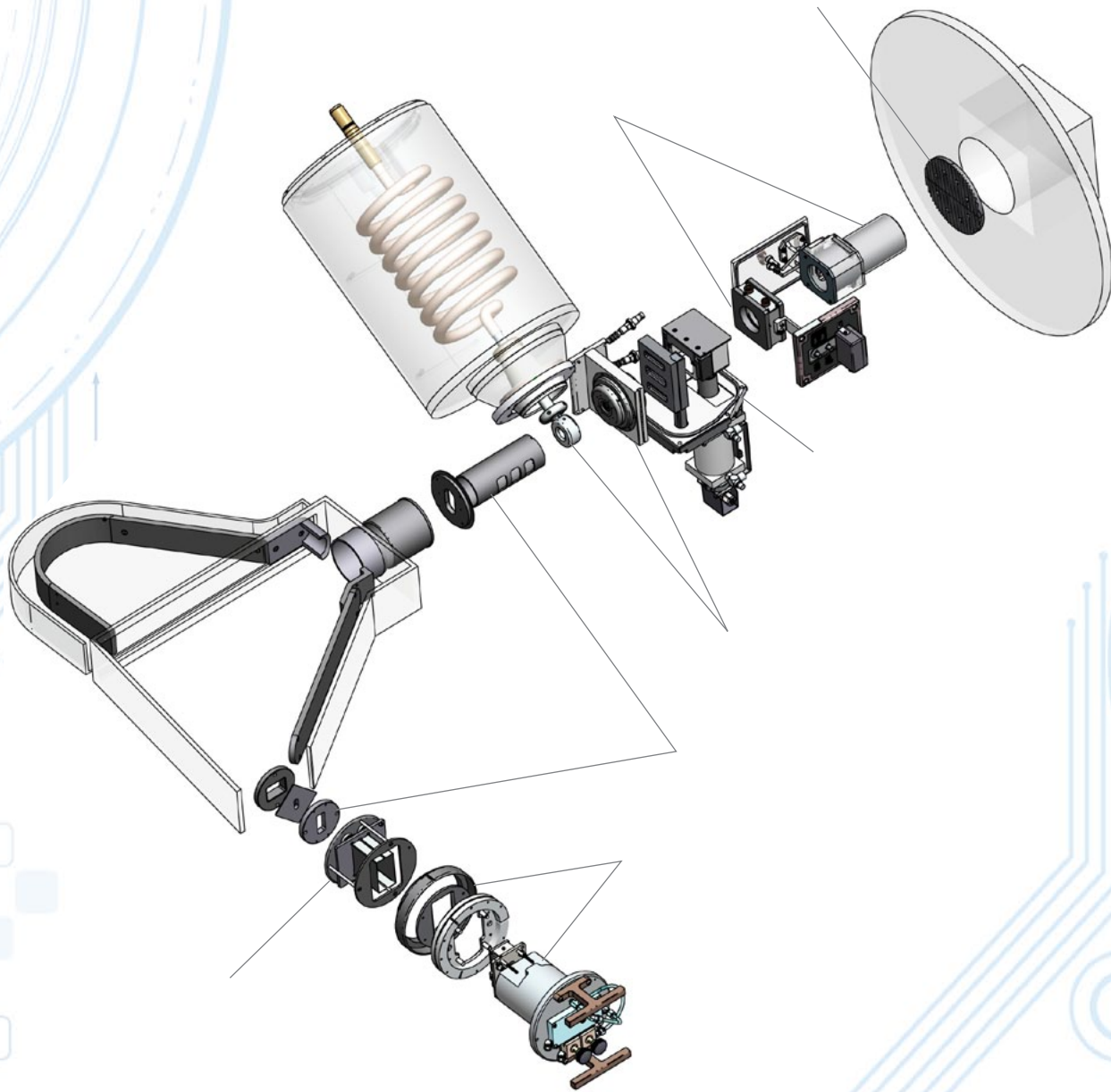




Illustrated Parts Guide for
Axcelis HE/VHE 200mm



512.259.0320
800.621.9598

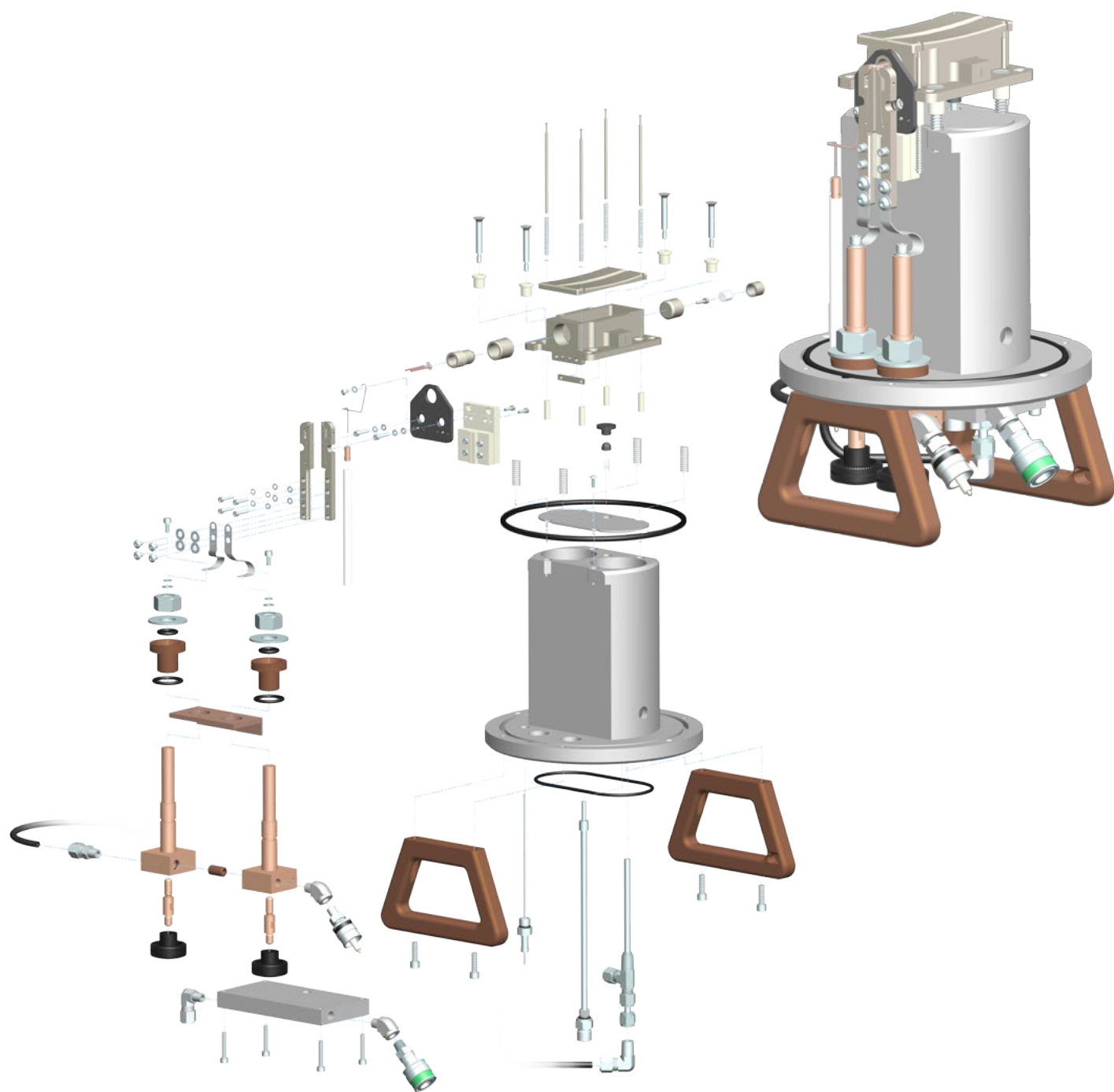


PO Box 217
Leander, TX 78646

Glemco® - Any unauthorized use and or duplication of any material from this media without express and written permission from Glemco is strictly prohibited.

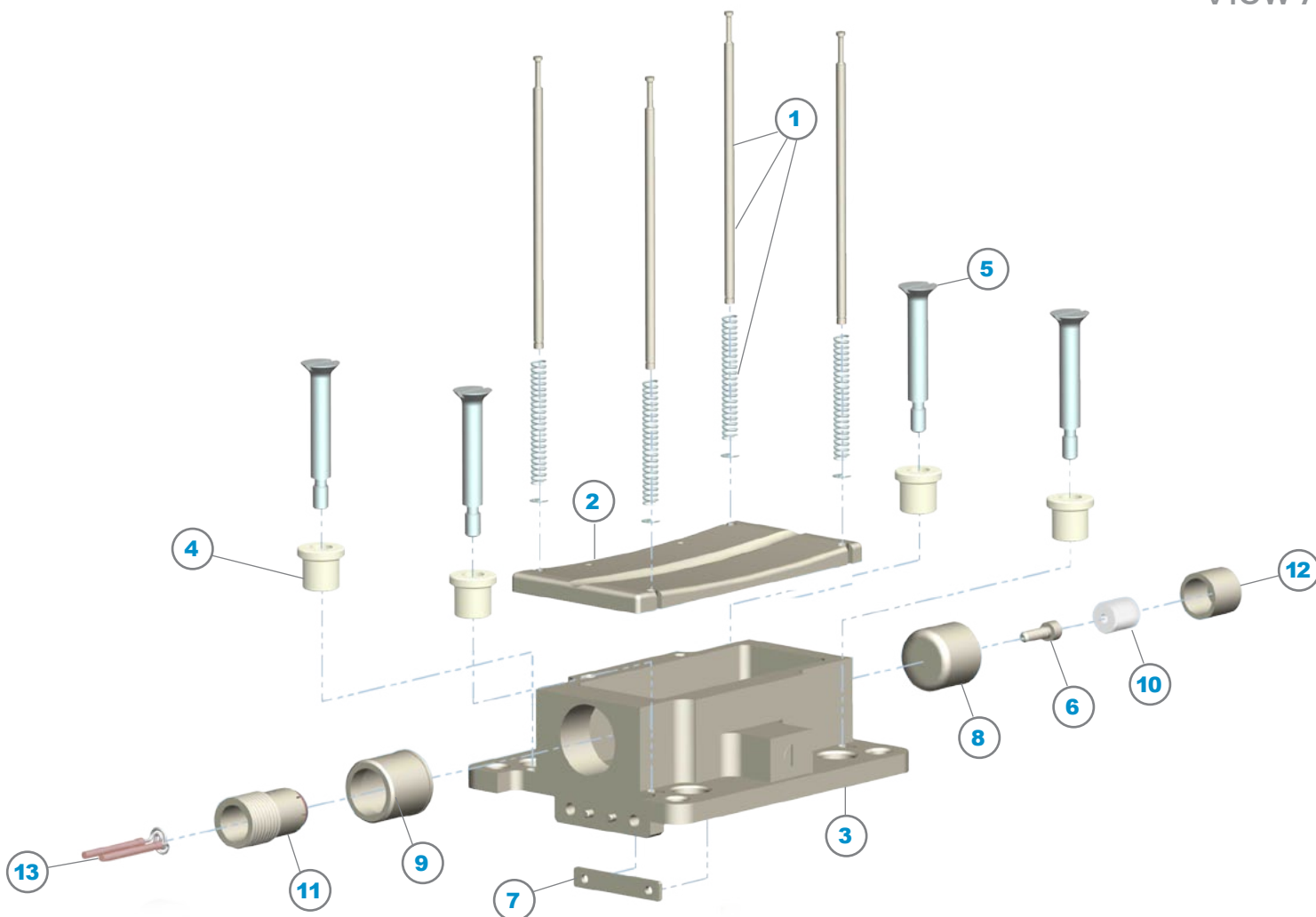
99560BM

Source Assembly



99560BM

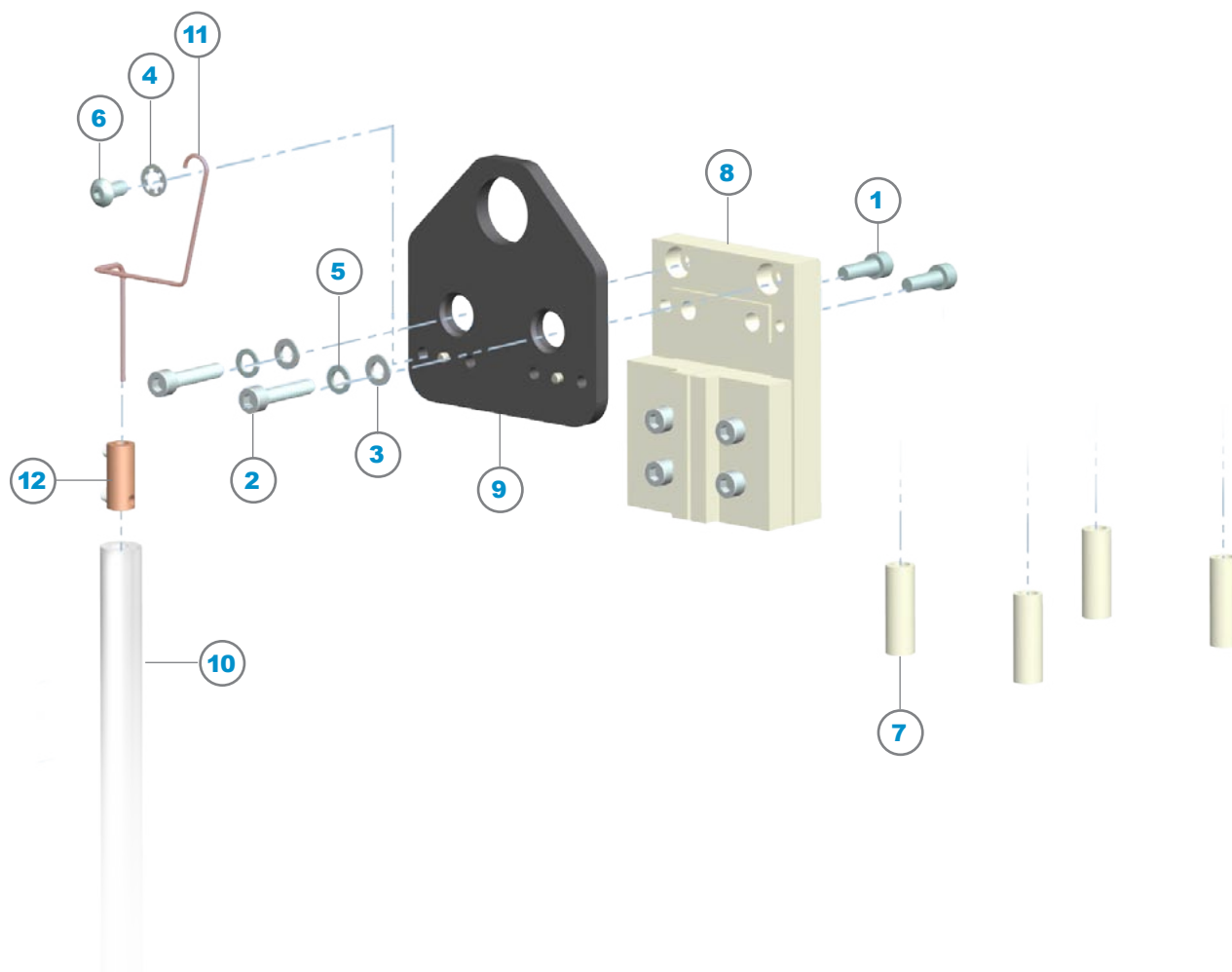
View A



ITEM	P/N	DESCRIPTION	QTY
1	99014	Retainer Pin Assembly, SS Spring	4
2	99402	Face Plate, 20R, Molybdenum	1
3	99286C	Arc Chamber, Without Vaporizer Ports, Molybdenum	1
4	99292	Spacer, Shoulder Screw	4
5	99338	Arc Chamber Mounting Screw	4
6	99403	Repeller Screw, Molybdenum	1
7	99404A	Screw Retainer, No Slots	1
8	99406A	Repeller, 1pc Version, Molybdenum	1
9	99409	Cathode Repeller, Molybdenum	1
10	99412	Repeller Insulator	1
11	99413	Cathode, Arc Wire, TZM With 4.6mm Tungsten Button	1
12	99415	Inner Cup Shield, Molybdenum	1
13	99477A	Filament Assembly, .040	1

99560BM

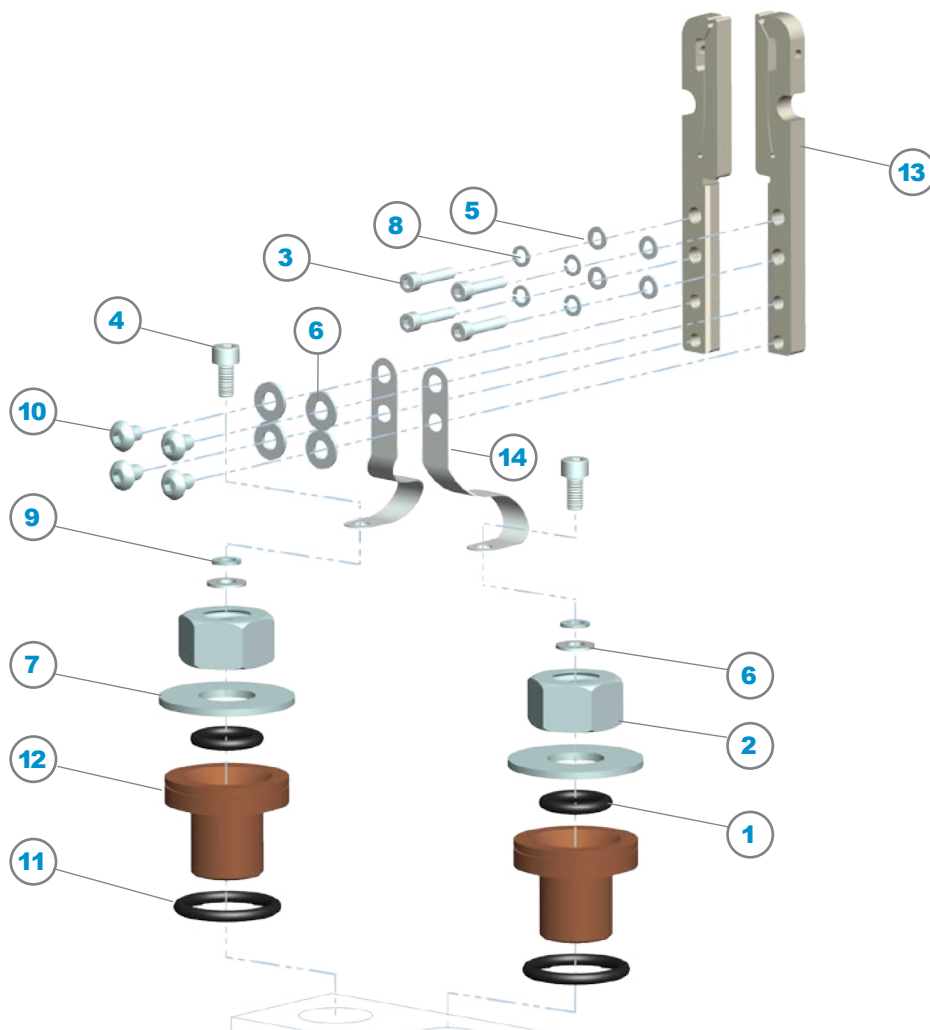
View B



ITEM	P/N	DESCRIPTION	QTY
1	82411	6-32 x 3/8", SS, SHCS	2
2	82420	6-32 x 5/8", SS, SHCS	2
3	82469	#6 x .032, SS, Washer, Flat	2
4	82604	#6, .150" ID x .295" OD, SS, Washer, Internal Tooth, Lock	1
5	82606	#6, .148" ID x .250" OD, SS, Washer, Split, Lock	2
6	82625	6-32 x 1/4", SS, BHSS	1
7	99285A	Spacer, Ceramic	4
8	99401B	Insulator Mounting Block With Screws	1
9	99410GC	Cathode Support Plate Assembly	1
10	99422	Insulator, Feed-Thru Cathode	1
11	99428	Cathode Wire	1
12	99445	Connector, Feed-Thru Cathode	1

99560BM

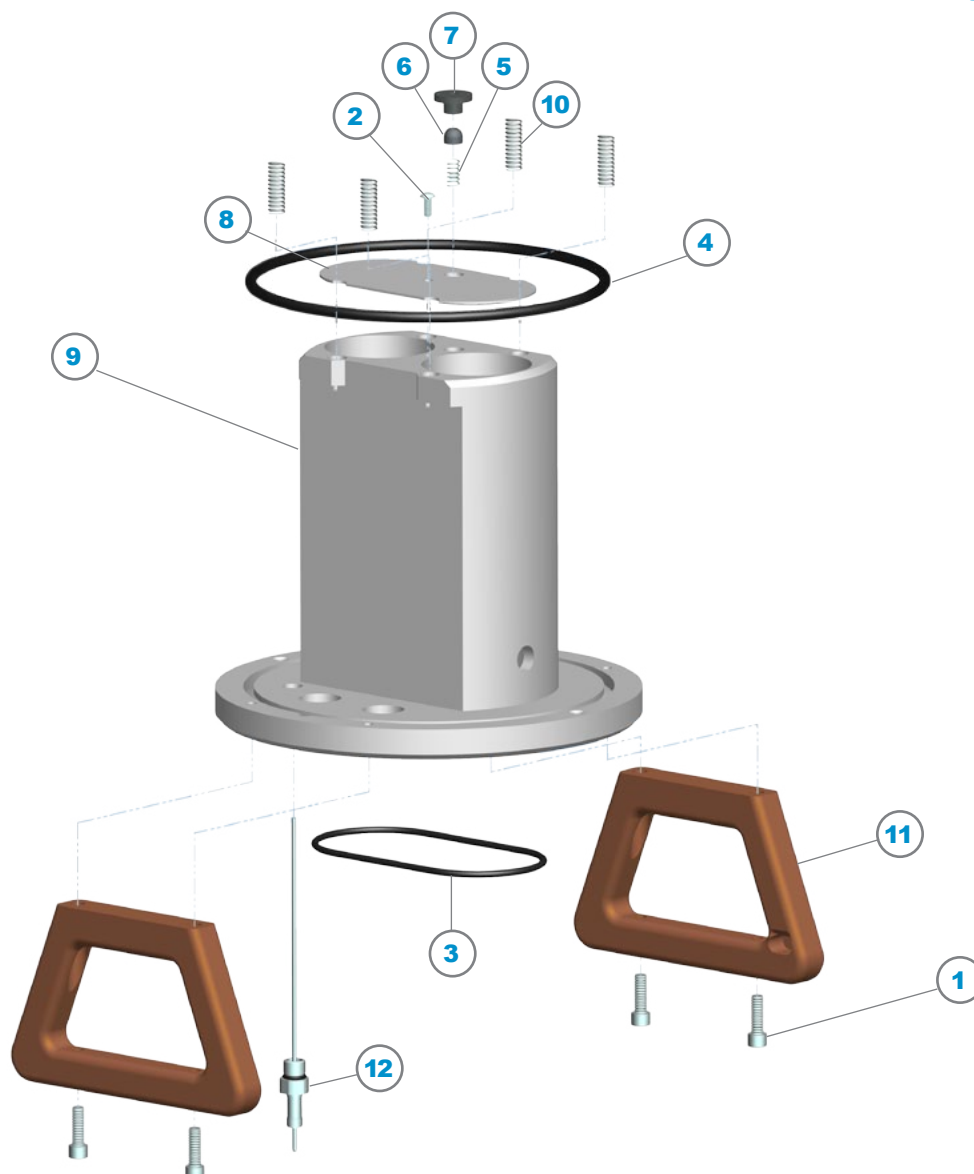
View C



ITEM	P/N	DESCRIPTION	QTY
1	82207V	-208, Viton, 75A Duro, O-Ring	2
2	82337	5/8"-11 x 15/16", SS, Hex Nut	2
3	82420	6-32 x 5/8", SS, SHCS	4
4	82439	10-32 x 3/8", SS, SHCS	2
5	82469	#6 x .032, SS, Washer, Flat	4
6	82478	#10 x .032, SS, Washer, Flat	6
7	82491	9/16" x .090, SS, Washer, Flat	2
8	82606	#6, .148" ID x .250" OD, SS, Washer, Split, Lock	4
9	82608	#10, .220" ID x .334" OD, SS, Washer, Split, Lock	2
10	82639	10-32 x 1/4", SS, BHSS	4
11	83114	-214, Buna, 70A Duro, O-Ring	2
12	99324A	Feed-Thru Insulator, Long	2
13	99407	Filament Clamp	2
14	99414	Filament Feed Strap	2

99560BM

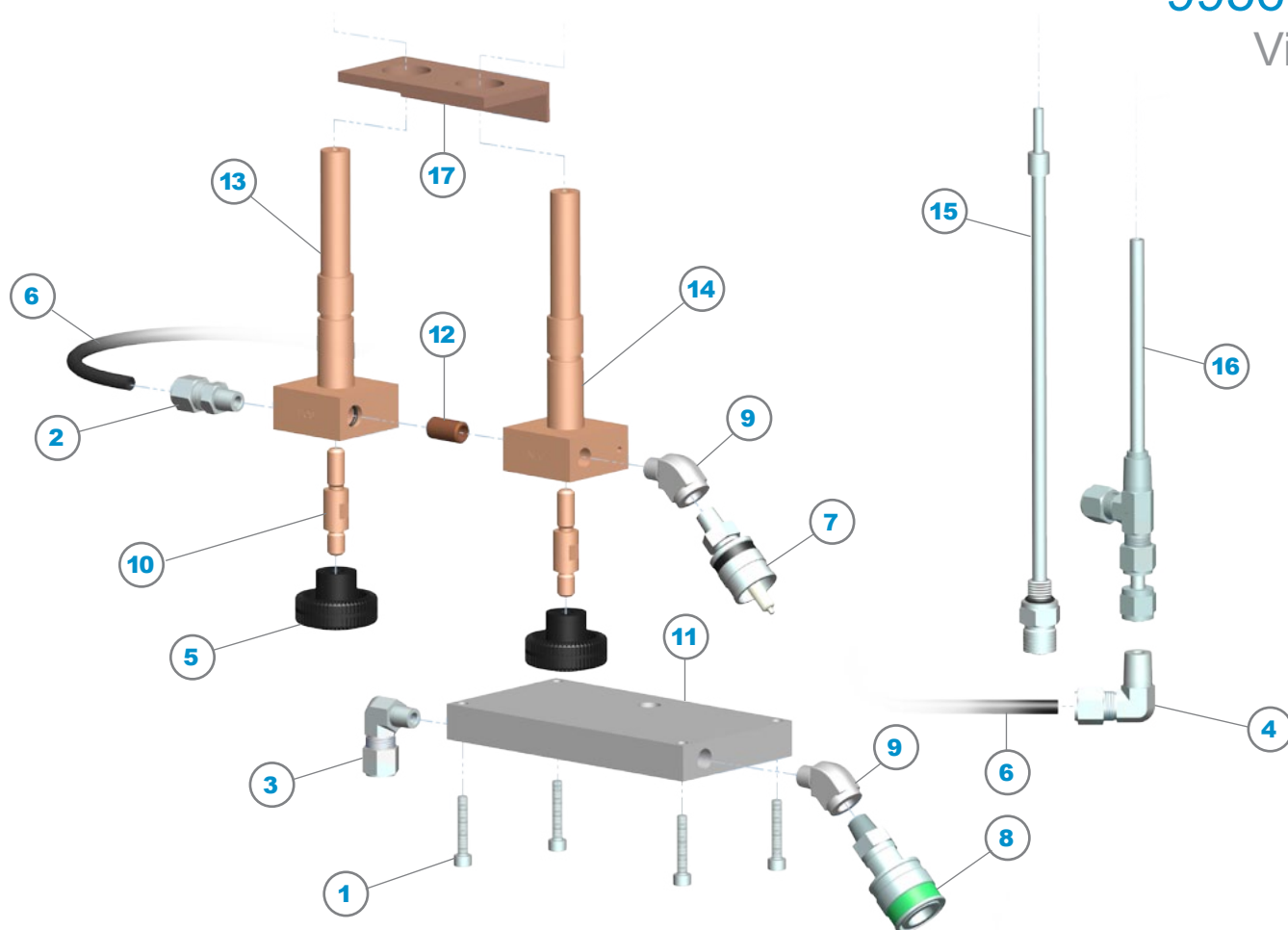
View D



ITEM	P/N	DESCRIPTION	QTY
1	82445	1/4"-20 x 3/4", SS, SHCS	4
2	82631	8-32 x 3/8", SS, BHSS	1
3	83141V	-241, Viton, 75A Duro, O-Ring	1
4	83264	-364, Buna, 70A Duro, O-Ring	1
5	99172A	Compression Spring, .50" Long, Inconel	1
6	99176	Ball Joint, Graphite	1
7	99177	SKT Joint, Graphite	1
8	99252	Vaporizer Exit Shield	1
9	99277	Source Body With Vaporizer Ports	1
10	99293	Spring, Shoulder Screw	4
11	99326A	Source Handle	2
12	99426	Feed-Thru Cathode	1

99560BM

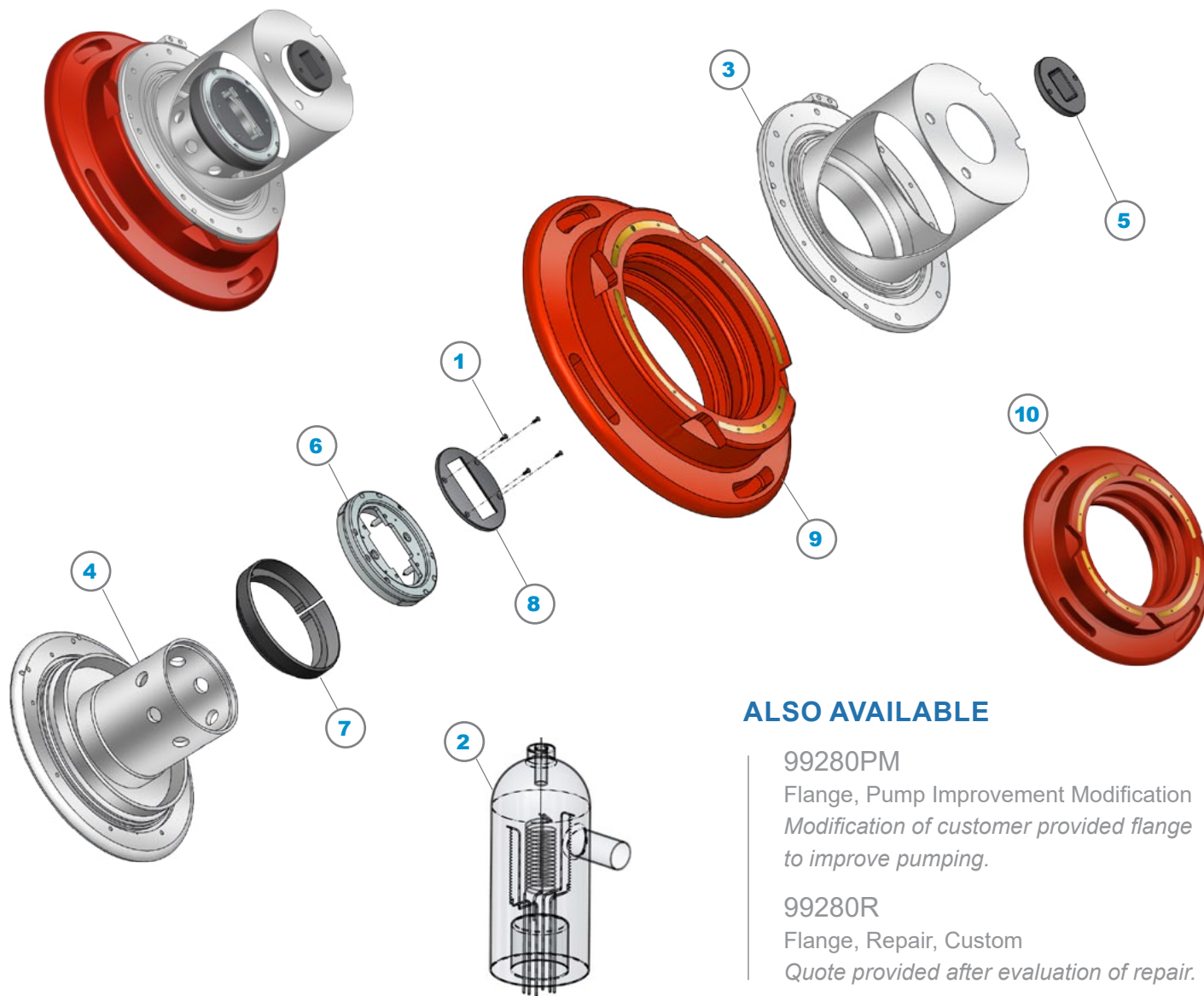
View E



ITEM	P/N	DESCRIPTION	QTY
1	82442	10-32 x 1", SS, SHCS	4
2	82527	1/4" Tube To 1/8" NPT, SS, Male Connector Fitting	1
3	82528	1/4" Tube To 1/8" NPT, SS, Male Elbow Fitting	1
4	82535A	1/4", SS, Without Nut, Union Elbow Fitting	1
5	82708	Fluted Hand Knob, Plastic	2
6	82751	1/4" OD x .040 Wall, LDPE, Tubing	15"
7	83701	Fitting, Quick Connect Stem, Key 1	1
8	83703	Fitting, Quick Connect Stem, Key 3	1
9	8A130	1/8" NPTF x 1/8" NPTM, SS, 45° Street Elbow Fitting	2
10	99120	Threaded Stud	2
11	99251	Vaporizer Blank-Off Plate	1
12	99327	Feed-Thru Connector	1
13	99329	Positive Feed-Thru	1
14	99330	Negative Feed-Thru	1
15	99333	Gas Feed Tube Assembly	1
16	99335	Cooling Tube Assembly	1
17	99418	Insulator	1

Water Cooled Source Liner & Flange

99196 | 99280A



ALSO AVAILABLE

99280PM

Flange, Pump Improvement Modification
Modification of customer provided flange to improve pumping.

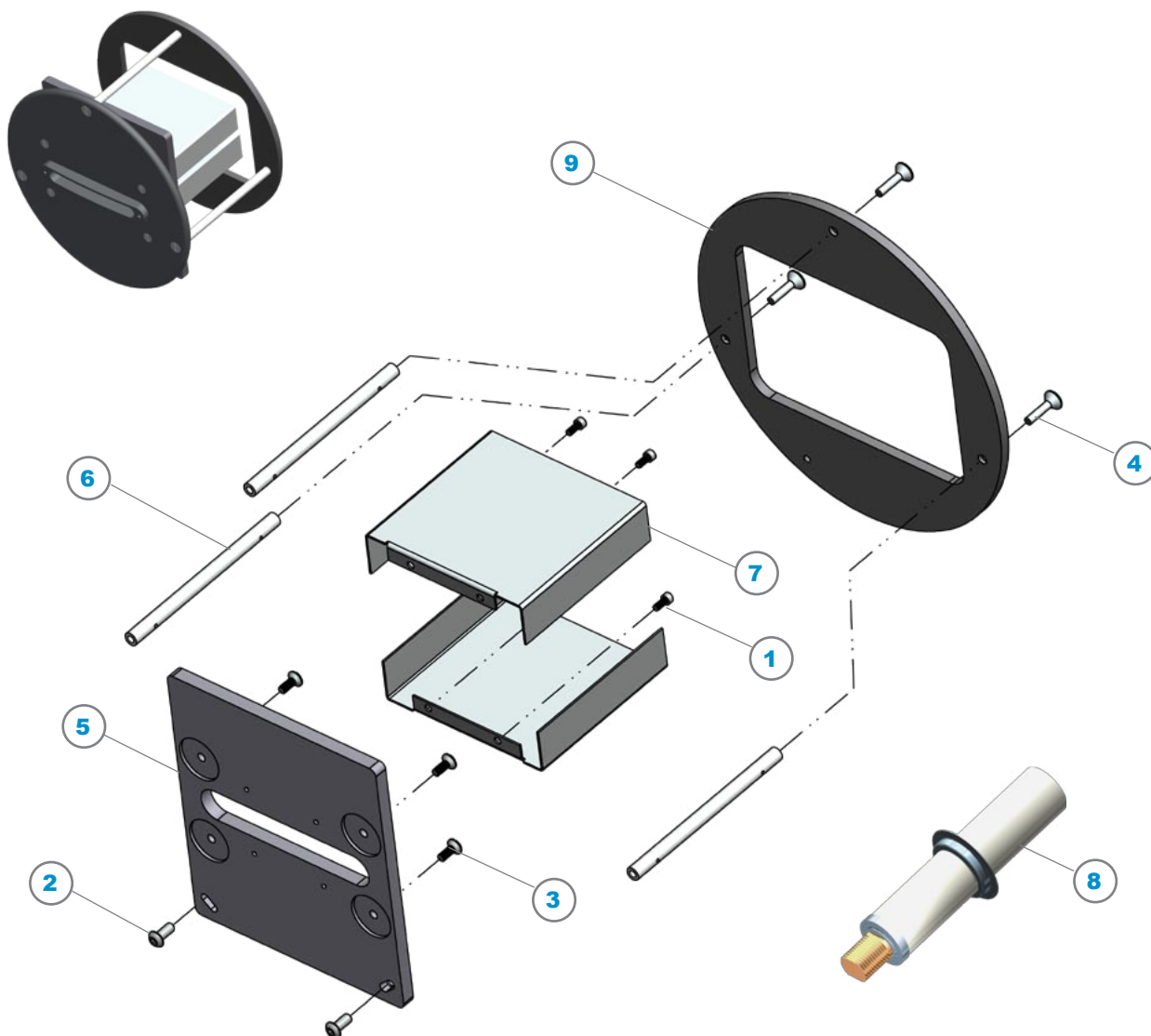
99280R

Flange, Repair, Custom
Quote provided after evaluation of repair.

ITEM	P/N	DESCRIPTION	QTY
1	8B330	8-32 x 7/16", SS, FHSS	4
2	99193	Ion Gauge	1
3	99196	Liner, Water Cooled	1
4	99280A	Flange, Floating Clamp, Shielded	1
5	99453A	Beam Defining Aperture	1
6	99462	Source Collar	1
7	99463	Source Clamp Ring	1
8	99548	Source Shield	1
9	99636-WC	Bushing, Red, With Crate	1
10	99636B-WC	Bushing, Tile Red, With Crate	

Extraction Electrode Components

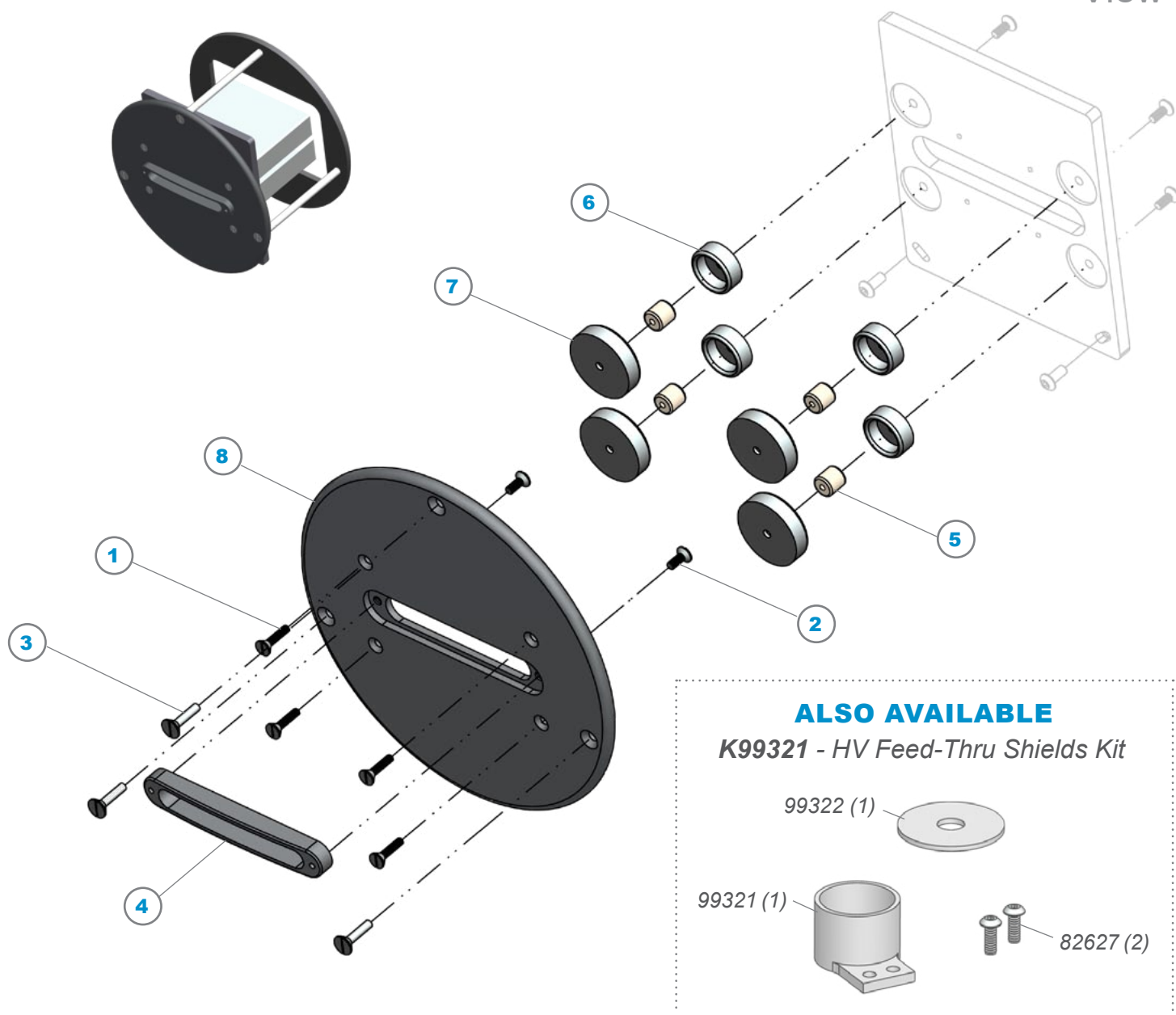
View A



ITEM	P/N	DESCRIPTION	QTY
1	82385	4-40 x 1/4", SS, SHCS	4
2	82631	8-32 x 3/8", SS, BHSS	2
3	8A166	6-32 x 3/8", 82°, SS, SFHS	4
4	8A168	8-32 x 1/2", 82°, SS, SFHS	3
5	99013AV	Electrode Ground Plate, VIG	1
6	99140	Standoff	3
7	99141	Bracket, Pair	1
8	99173A	HV Feed-Thru	
9	99191	Back Flange	1

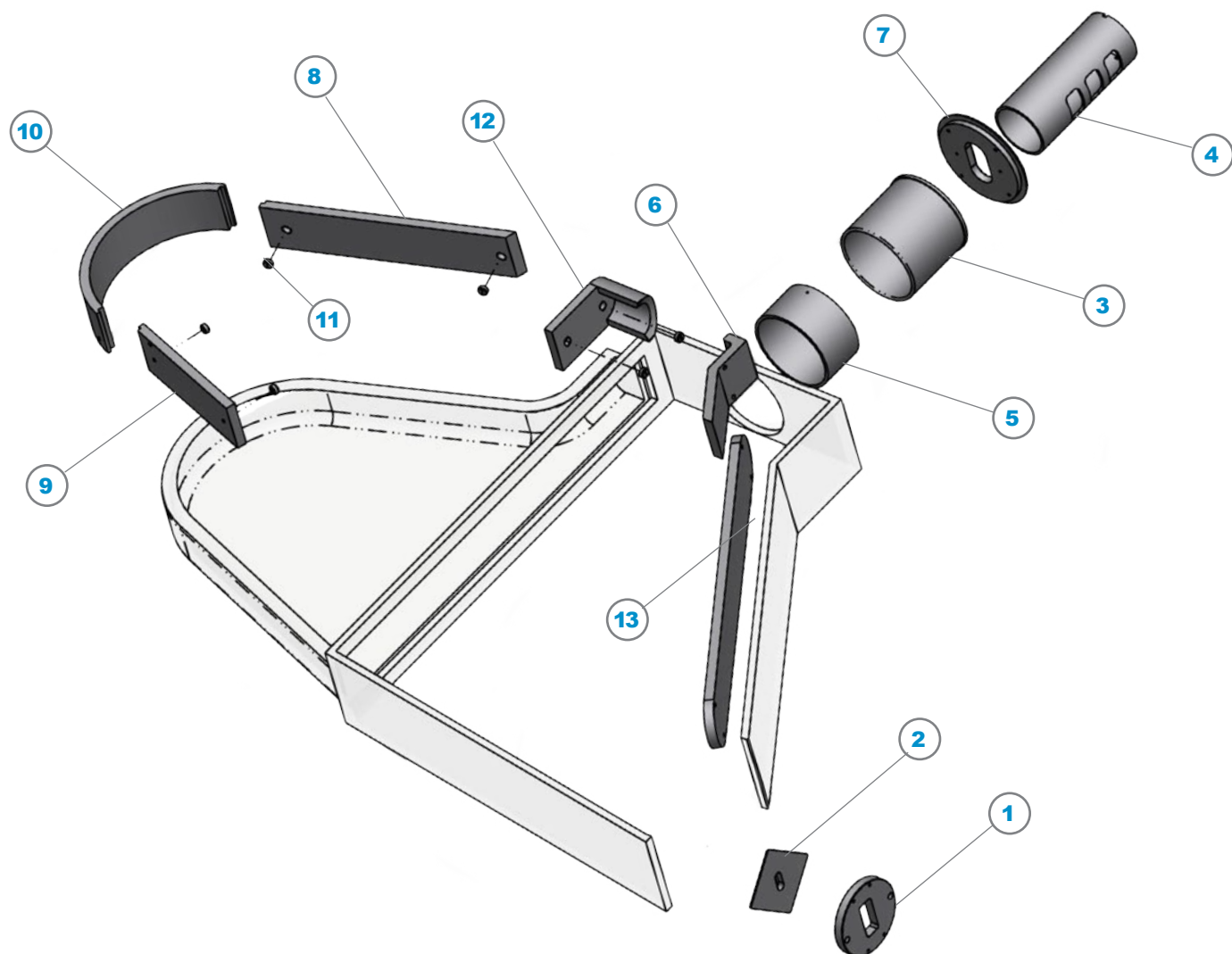
Extraction Electrode Components

View B



ITEM	P/N	DESCRIPTION	QTY
1	82582	6-32 x 7/16", 82°, SS, SFHS	4
2	8A166	6-32 x 3/8", 82°, SS, SFHS	2
3	8A168	8-32 x 1/2", 82°, SS, SFHS	3
4	99016AV	HV Aperture, VIG	1
5	99054	6-32 x 3/8" Ø x 3/8", Standoff	4
6	99138	Small Cup	4
7	99139	Large Cup	4
8	99586V	Aperture, VIG	1

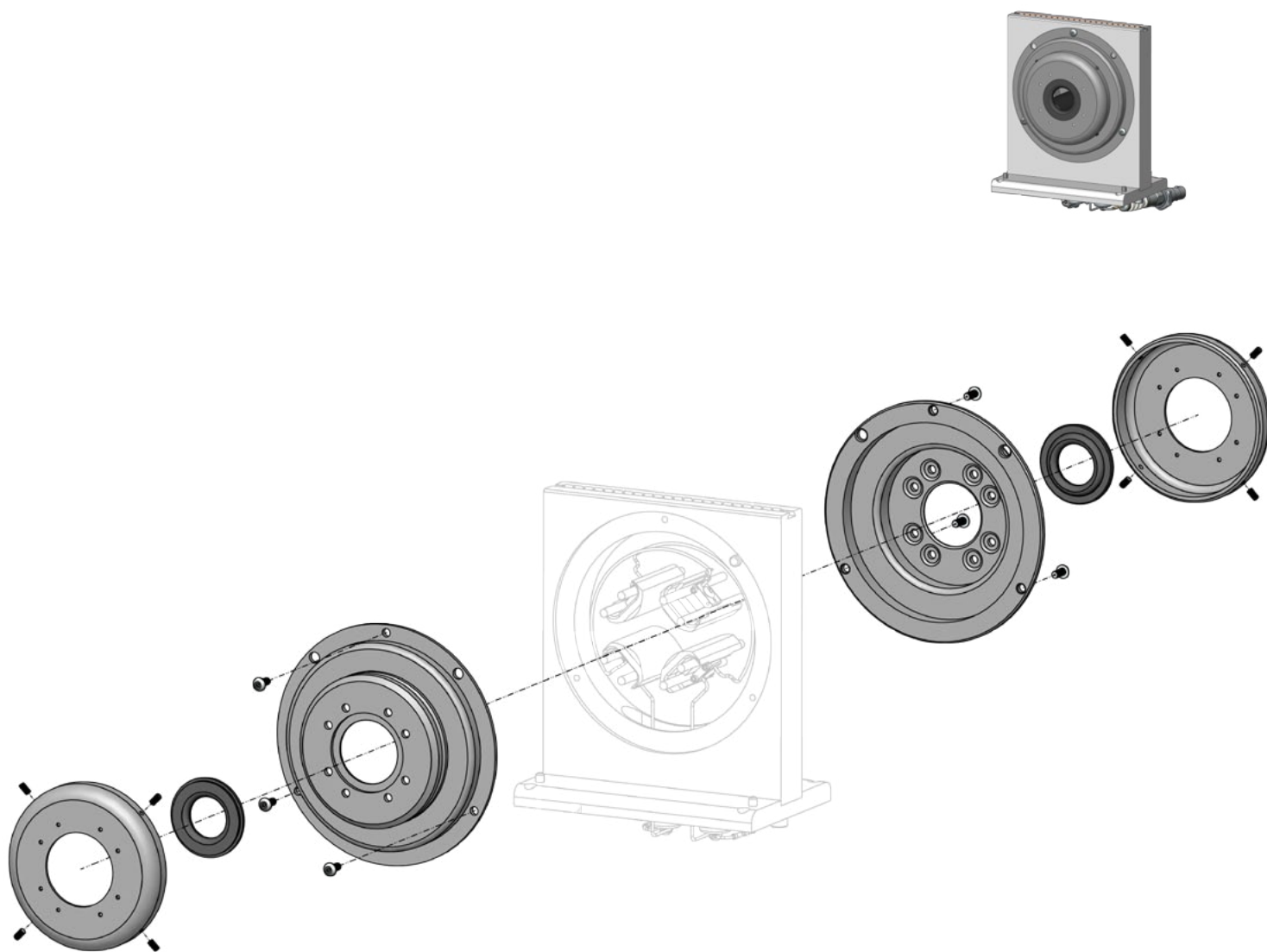
Analyzer Magnet Chamber Components



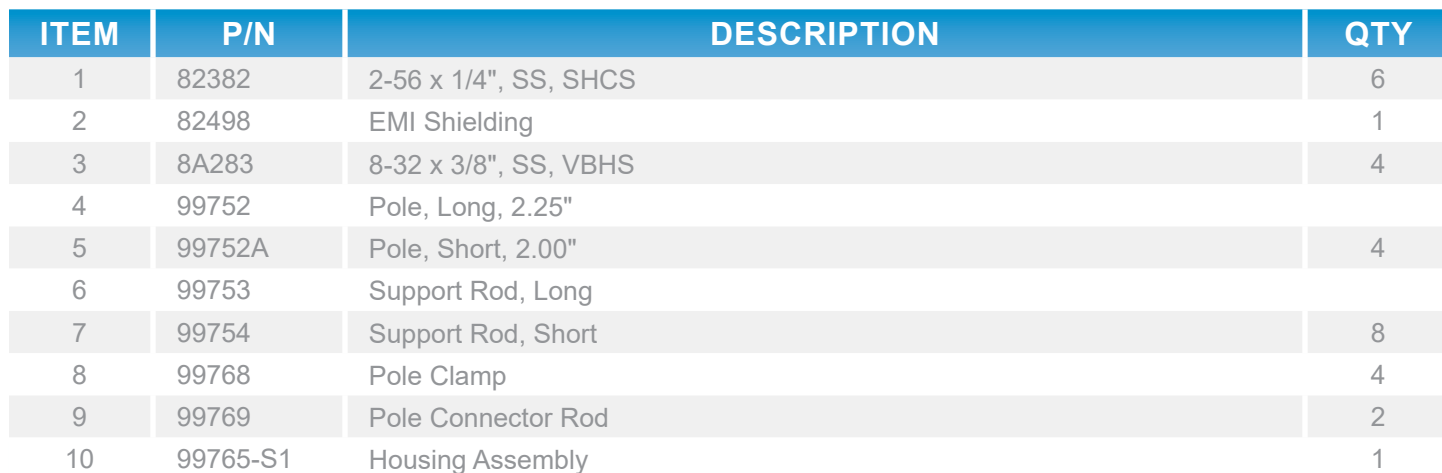
ITEM	P/N	DESCRIPTION	QTY
1	99036	Exit Aperture	1
2	99206	Entrance Aperture Plate, Linear Accel	1
3	99213	Extension Liner	1
4	99259	Post Accel Liner	1
5	99264	Exit Liner	1
6	99467	Inner Exit Shield	1
7	99489	Post Accel Aperture	1
8	99531	Liner	1
9	99531A	Liner	1
10	99575A	Magnet	1
11	99581	Insulating Cap	1
12	99591	Magnet Duct Liner	1
13	99684	Inner Beam Dump	1

Electrostatic Quadrapole Components

99765 View 1



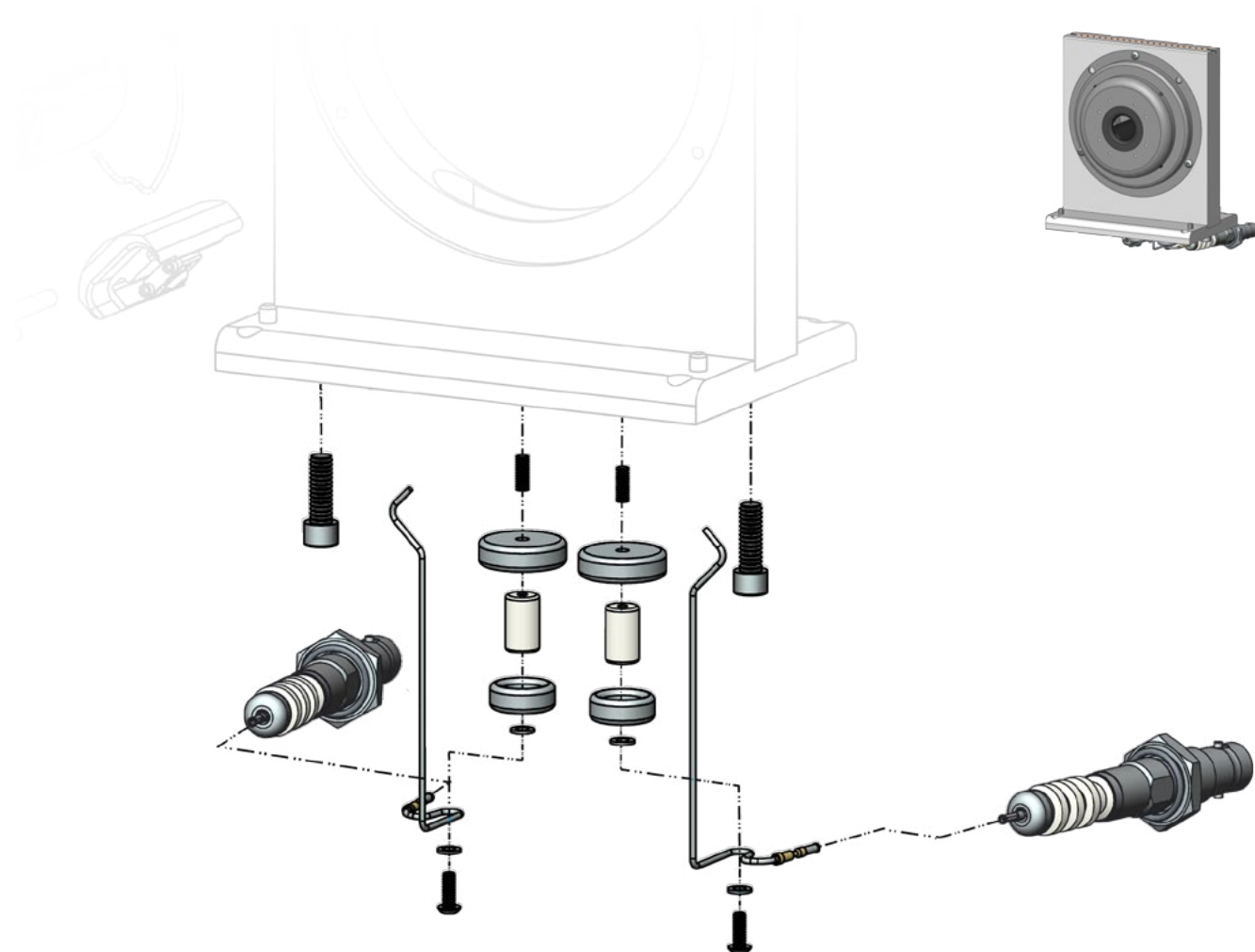
ITEM	P/N	DESCRIPTION	QTY
1	82116	6-32 x 1/4", SS, Set Screw	8
2	8A283	8-32 x 3/8", SS, VBHS	6
3	99760A	Aperture, Exit, .27" Thick	2
4	99765-3	Support, Aluminum	2
5	99765-4	Cover Plate, Aluminum	2





Electrostatic Quadrapole Components

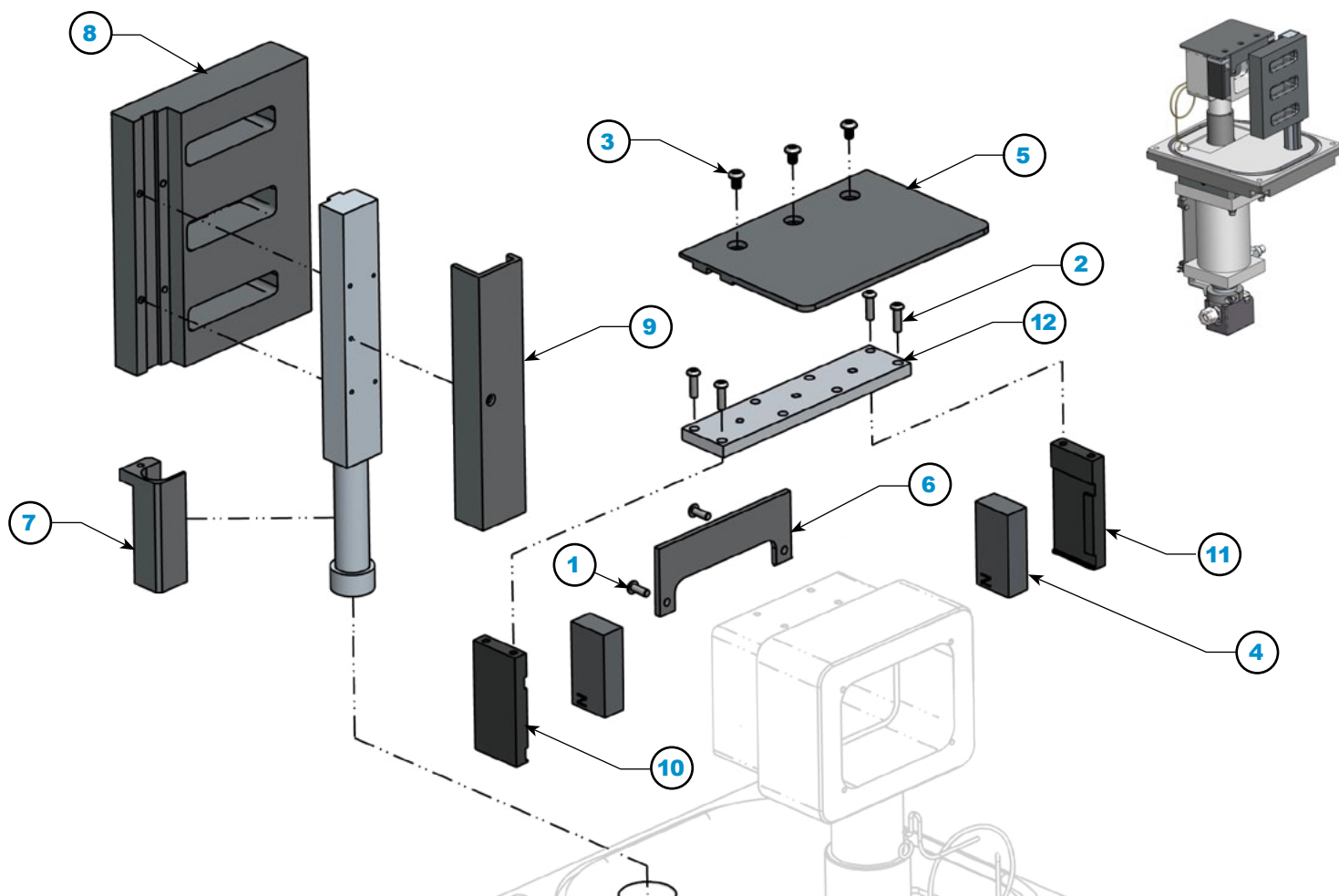
99765 View 3



ITEM	P/N	DESCRIPTION	QTY
1	30682	6-32 x 3/8" Ø x 5/8", Standoff	2
2	82445	1/4"-20 x 3/4", SS, SHCS	2
3	82469	#6 x .032, SS, Washer, Flat	4
4	82724	6-32 x 3/8", SS, Set Screw, Vented	2
5	8A257	6-32 x 3/8", SS, BHSS, Vented	2
6	99438	Feed-Thru, Lens	2
7	99766	Insulator Shield, Large	2
8	99767	Insulator Shield, Small	2
9	99770	Quadrapole Feed Rod, Left	1
10	99771	Quadrapole Feed Rod, Right	1

Variable Aperture Flag Components

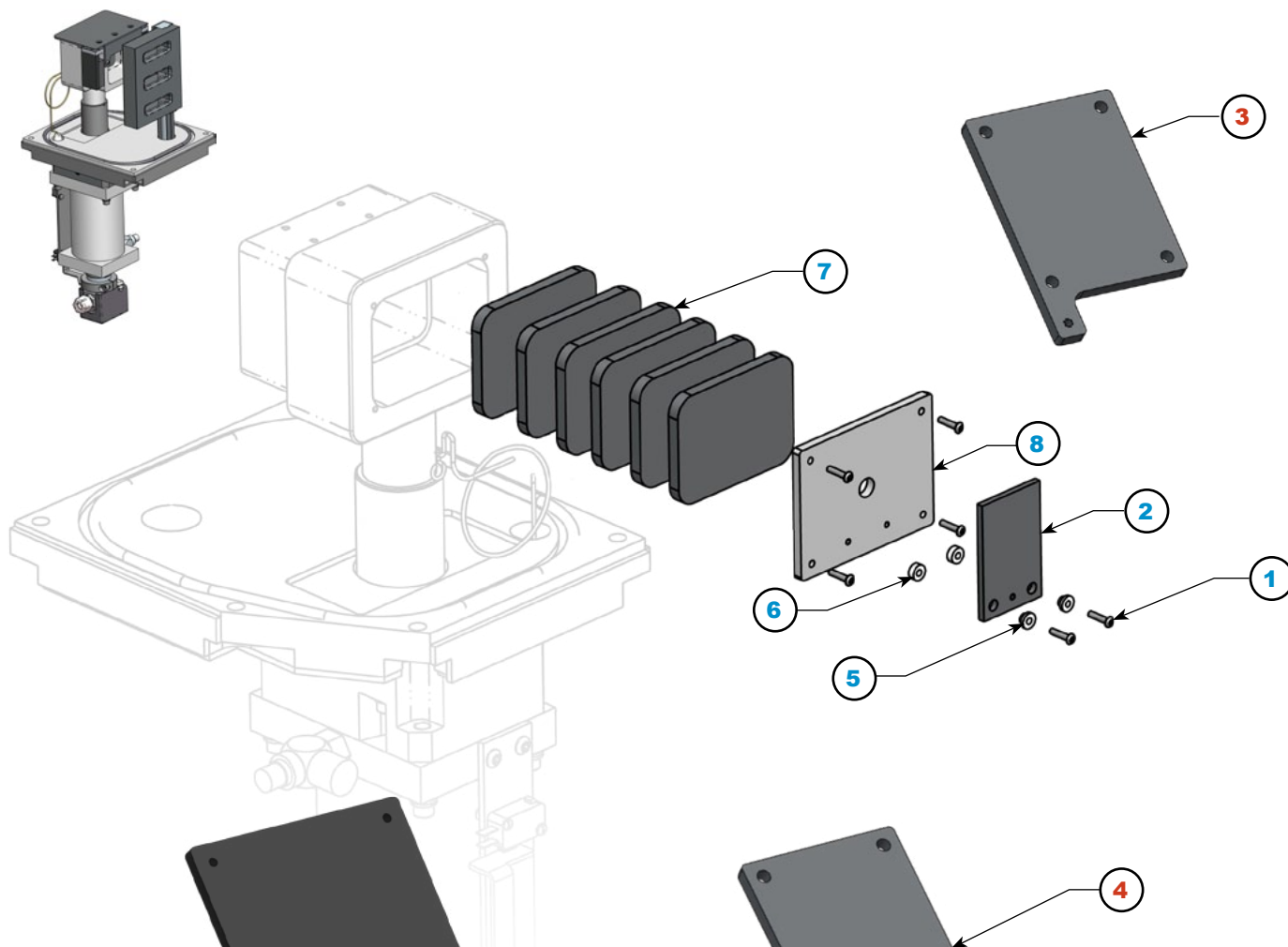
View 1



ITEM	P/N	DESCRIPTION	QTY
1			
2			
3			
4			
5			
6			
7			
8			
9			
10			
11			
12			
13			
14			

Variable Aperture Flag Components

View 2

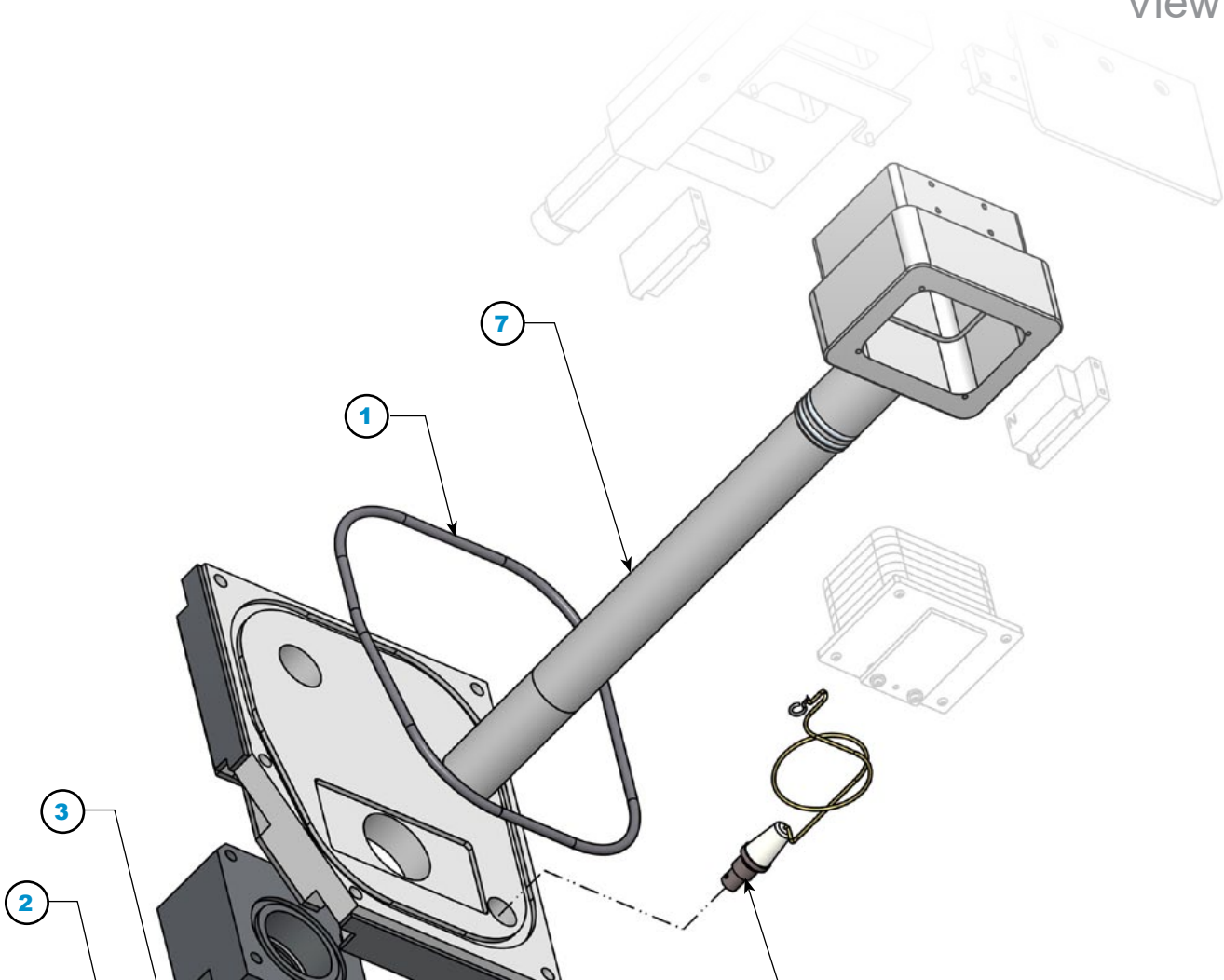


ITEM	P/N	DESCRIPTION	QTY
1			
2			
3			
4			
5			
6			
7			
8			
9			
10			
11			
12			
13			
14			



Variable Aperture Flag Components

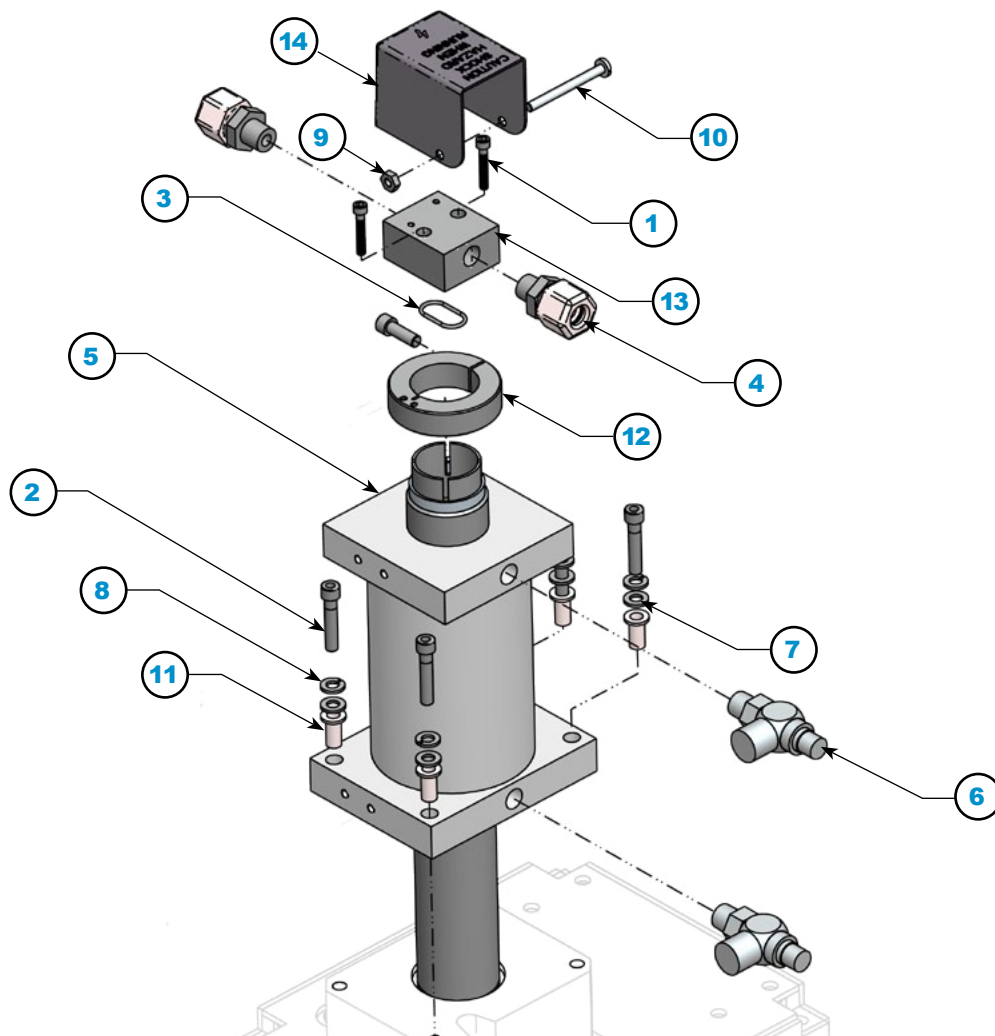
View 3



ITEM	P/N	DESCRIPTION	QTY
1			
2			
3			
4			
5			
6			
7			
8			
9			
10			
11			
12			
13			
14			

Variable Aperture Flag Components

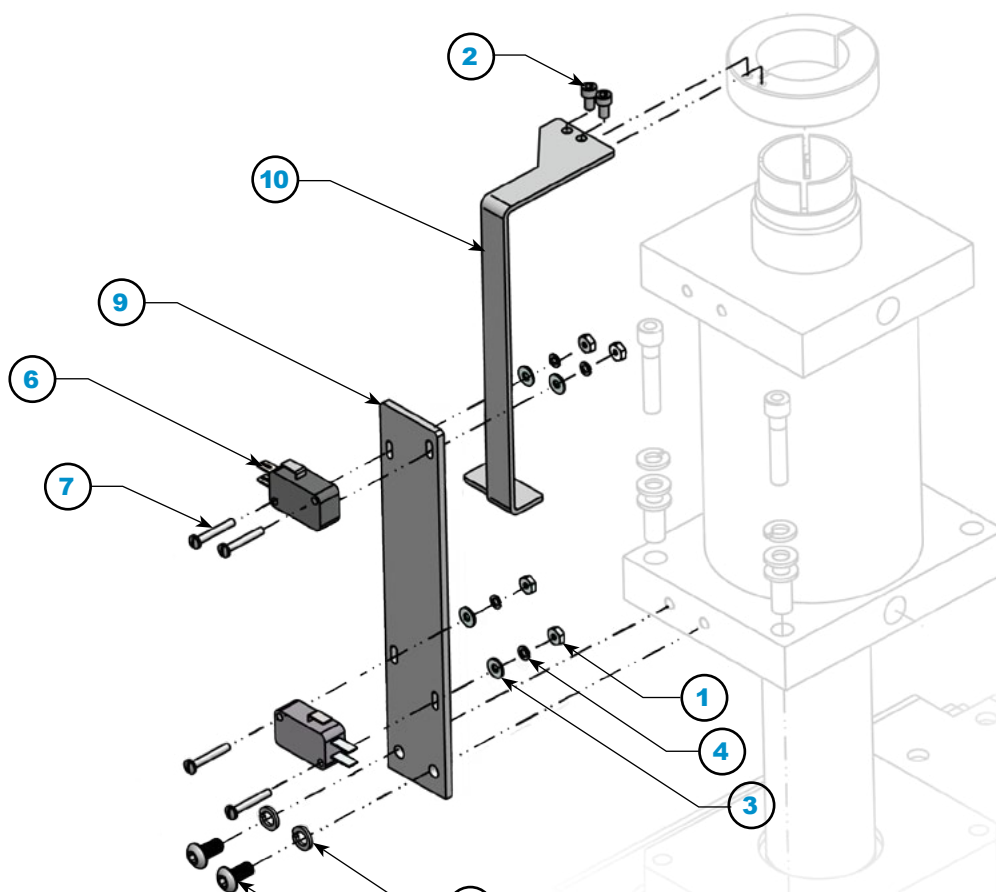
View 4



ITEM	P/N	DESCRIPTION	QTY
1			
2			
3			
4			
5			
6			
7			
8			
9			
10			
11			
12			
13			
14			

Variable Aperture Flag Components

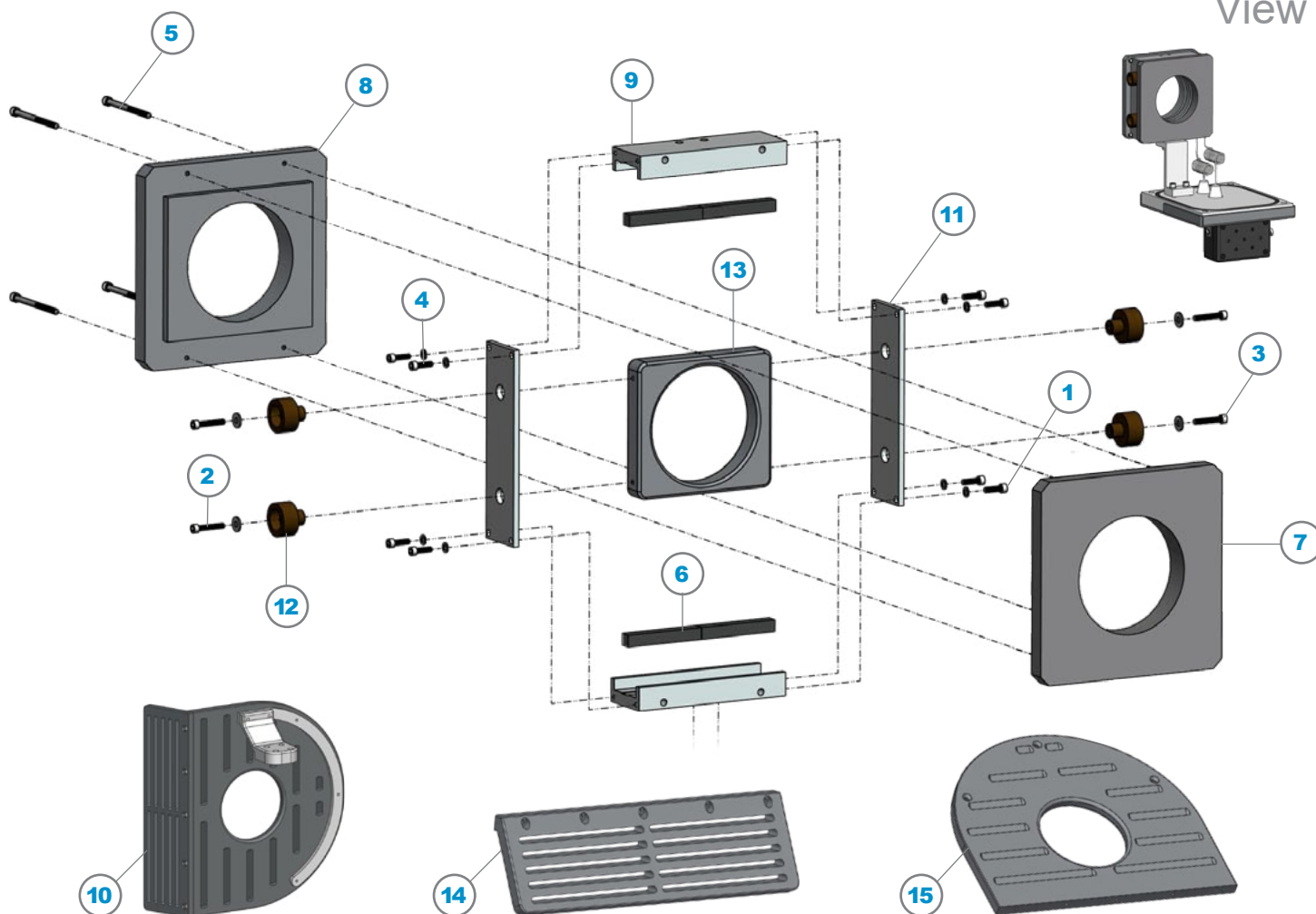
View 5



ITEM	P/N	DESCRIPTION	QTY
1			
2			
3			
4			
5			
6			
7			
8			
9			
10			
11			
12			
13			
14			

EMER Components For 99398A

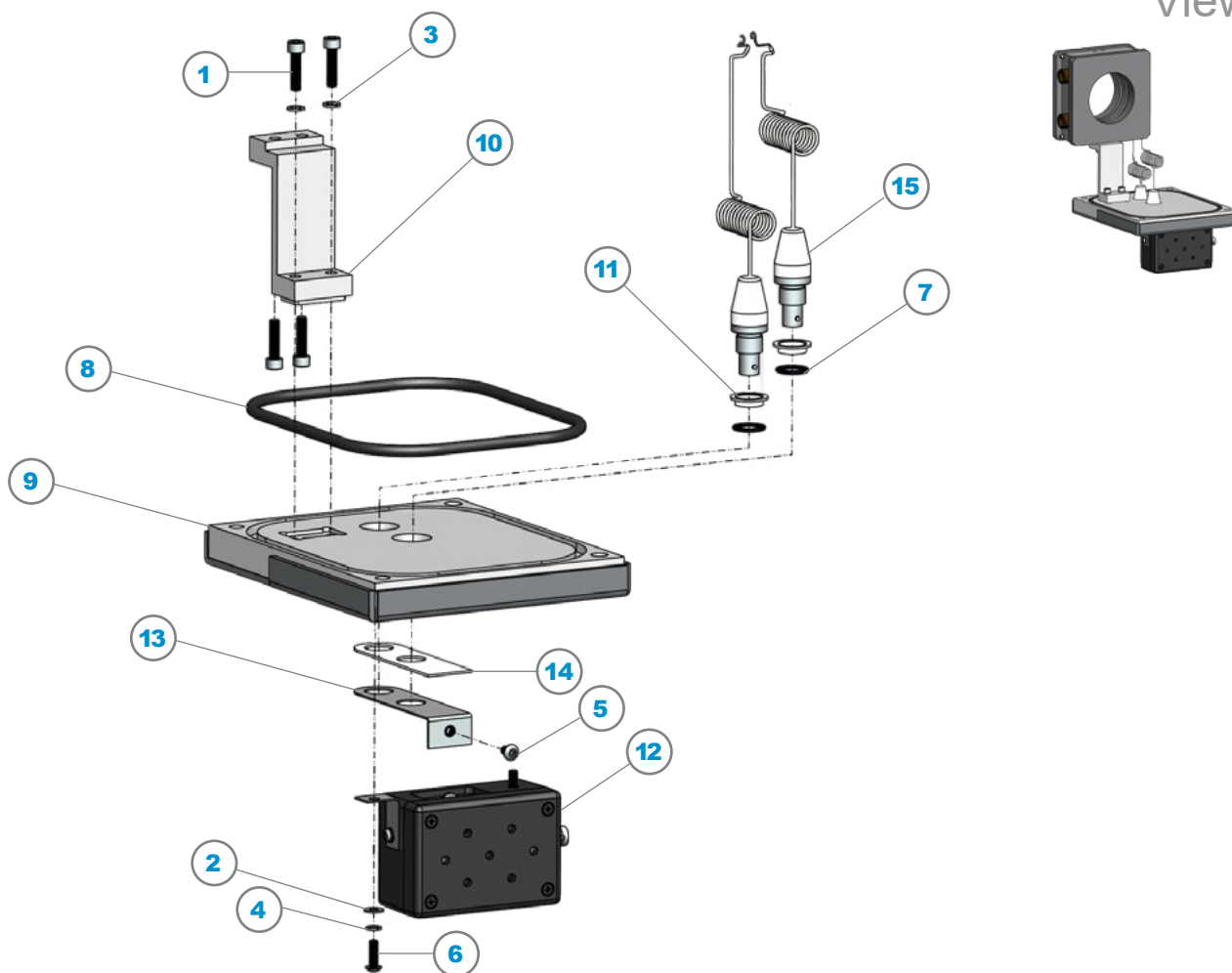
View 1



ITEM	P/N	DESCRIPTION	QTY
1	82387	4-40 x 3/8", SS, SHCS	8
2	82390	4-40 x 5/8", SS, SHCS	4
3	82456	#4 x .028, SS, Washer, Flat	4
4	82601	#4 x .025, SS, Washer, Split	8
5	8A122	4-40 x 1-1/2", SS, SHCS	4
6	99248	Magnet	4
7	99305	Aperture, Front	1
8	99305A	Aperture, Back	1
9	99398-5	Mounting Block, Magnet	2
10	99398-S1	Partition Plate Assembly	
11	99398A-4	Side Plate	2
12	99459	Bias Ring Aperture Insulator	4
13	99577	Aperture, Back Bias	1
14	99905	Shield, Side Partition Plate	
15	99906	Shield, Front Partition Plate	

EMER Components For 99398A

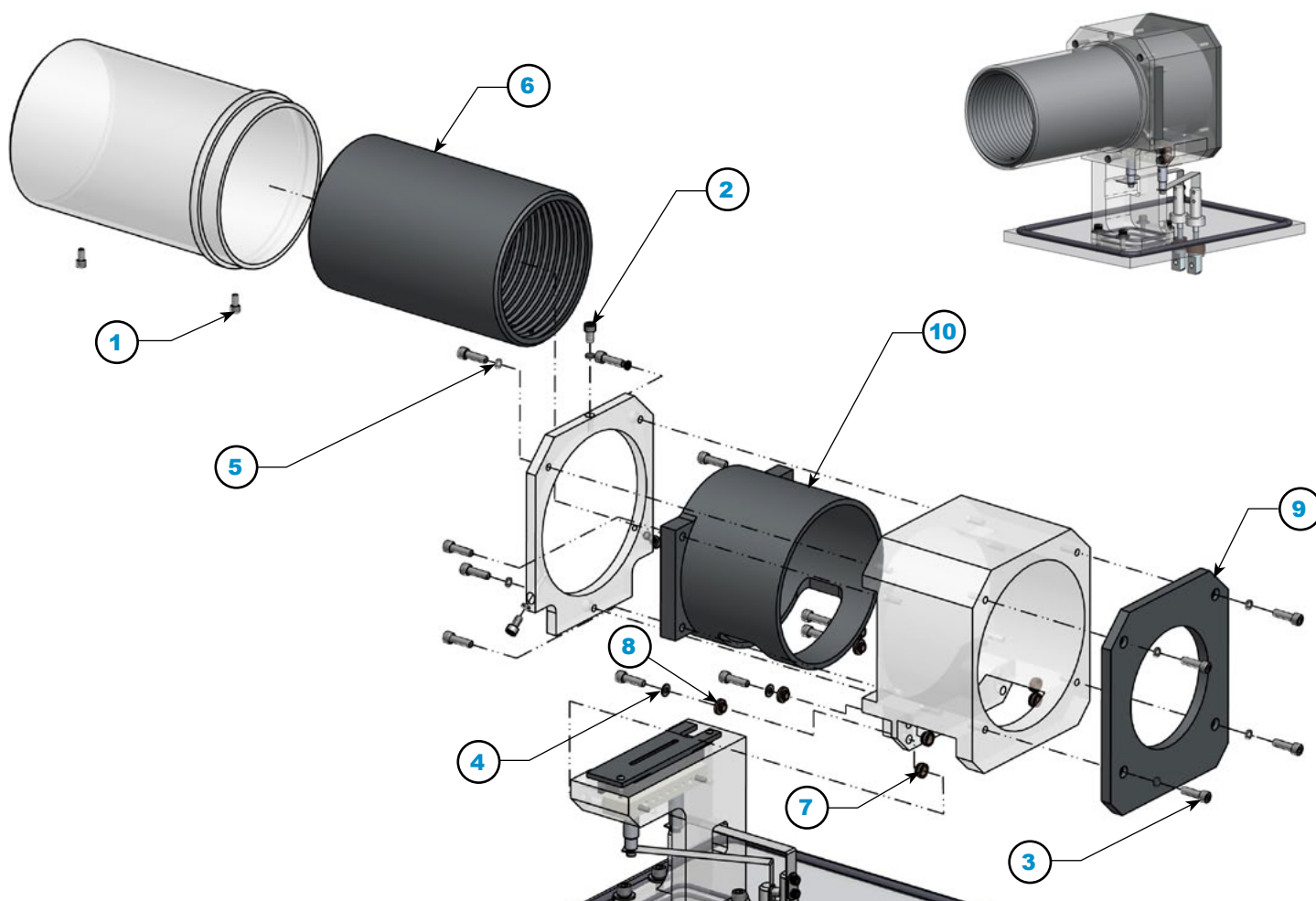
View 2



ITEM	P/N	DESCRIPTION	QTY
1	82441	10-32 x 3/4", SS, SHCS	4
2	82474	#8 x .032, SS, Washer, Flat	1
3	82608	#10, .220" ID x .334" OD, SS, Washer, Split, Lock	2
4	82609	#8, .174" ID x .293" OD, SS, Washer, Split, Lock	1
5	82630	8-32 x 1/4", SS, BHSS	1
6	82633	8-32 x 1/2", SS, BHSS	1
7	82914V	-014, Viton, 75A Duro, O-Ring	2
8	8A219	-361, Buna, 70A Duro, O-Ring	1
9	99398-1	Base Plate	1
10	99398-3	Support Arm	1
11	99398-6	Insulator, Feed-Thru Connector	2
12	99398-7	EMER Electronics	1
13	99398-9	Ground Strap	1
14	99398-10	Insulator, For Feed-Thru Connectors	1
15	99464	5 Amp Mini MHV Coaxial Connector, For Feed-Thrus	2

Electron Shower Components

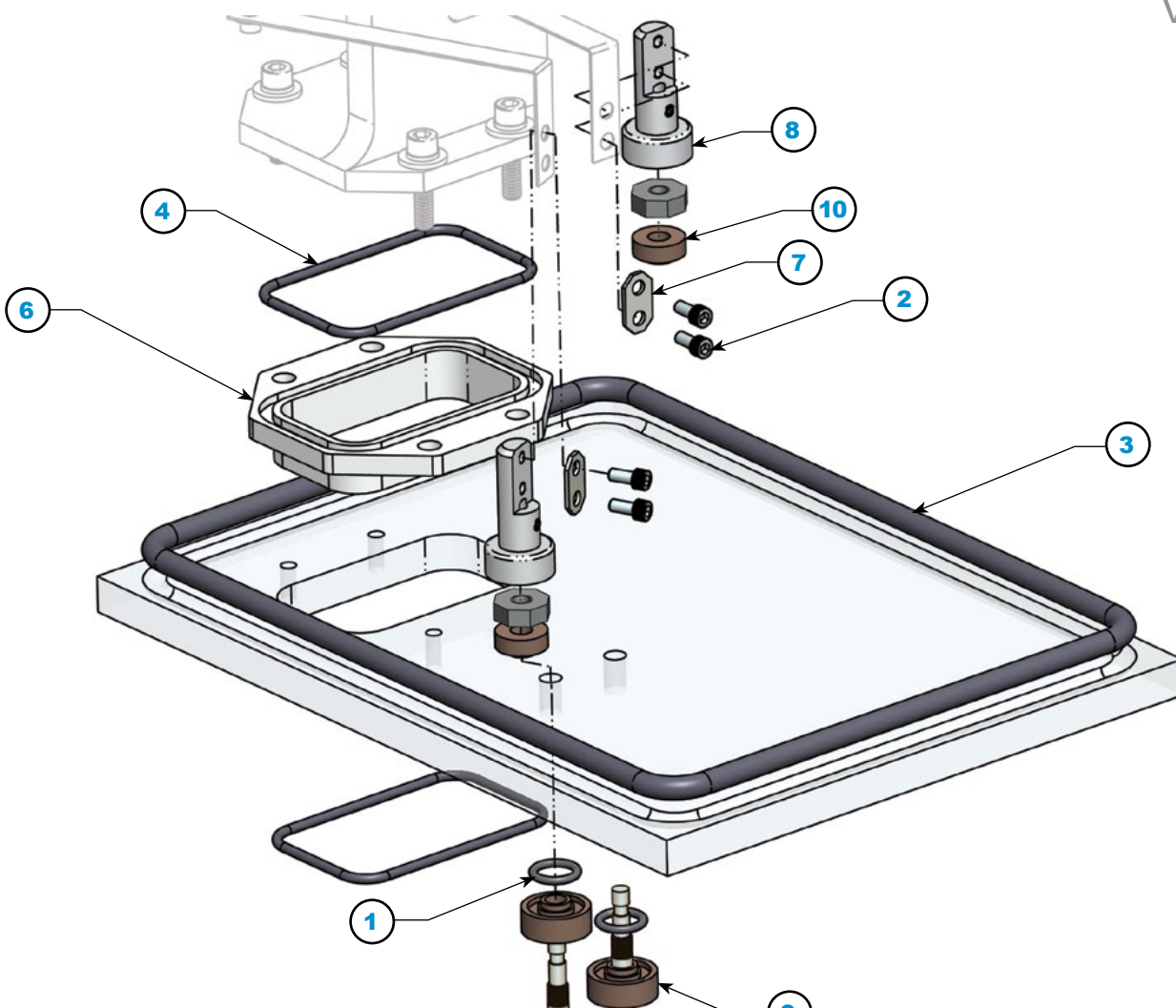
View 1



ITEM	P/N	DESCRIPTION	QTY
1			
2			
3			
4			
5			
6			
7			
8			
9			
10			
11			
12			
13			
14			

Electron Shower Components

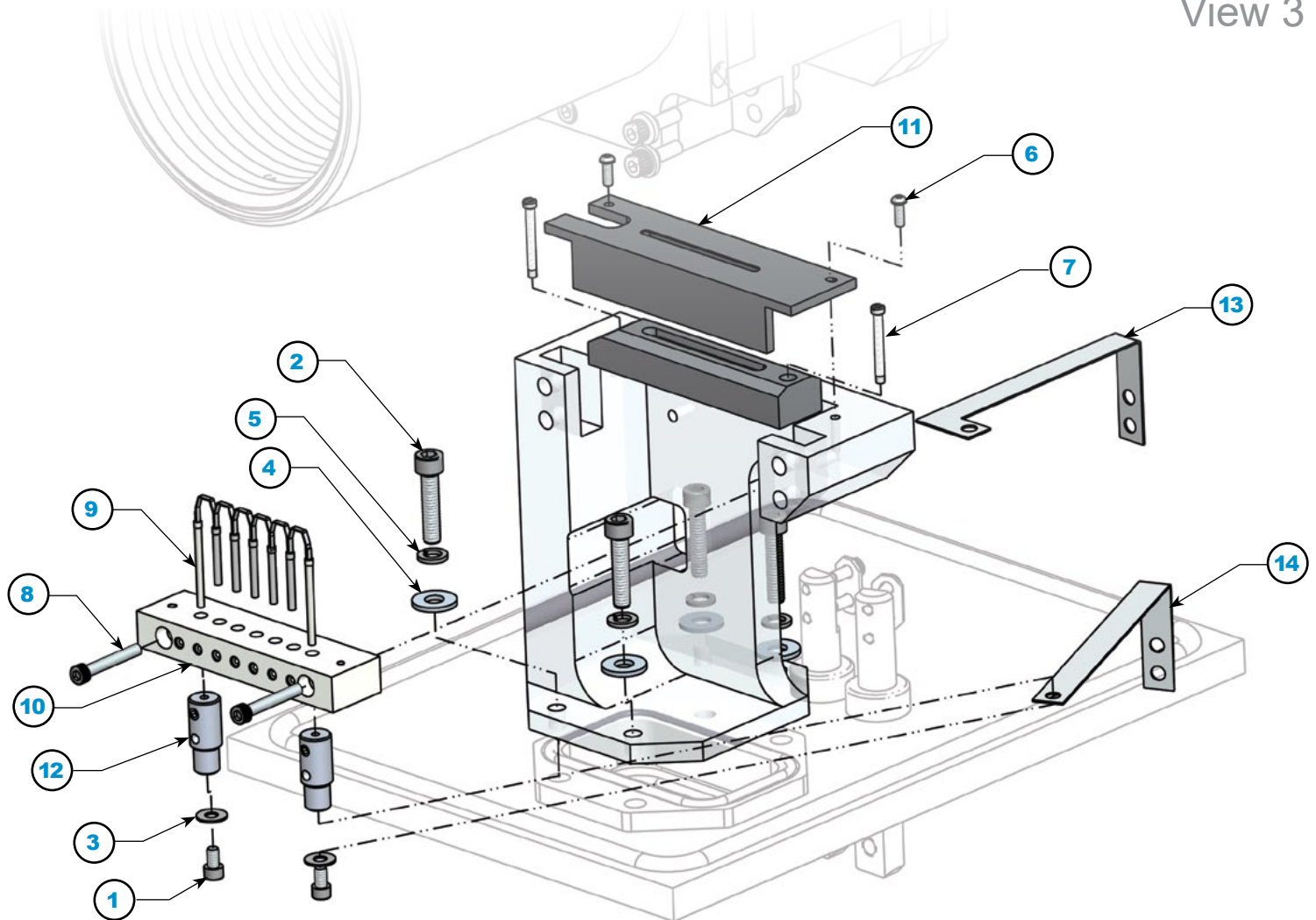
View 2



ITEM	P/N	DESCRIPTION	QTY
1			
2			
3			
4			
5			
6			
7			
8			
9			
10			
11			
12			
13			
14			

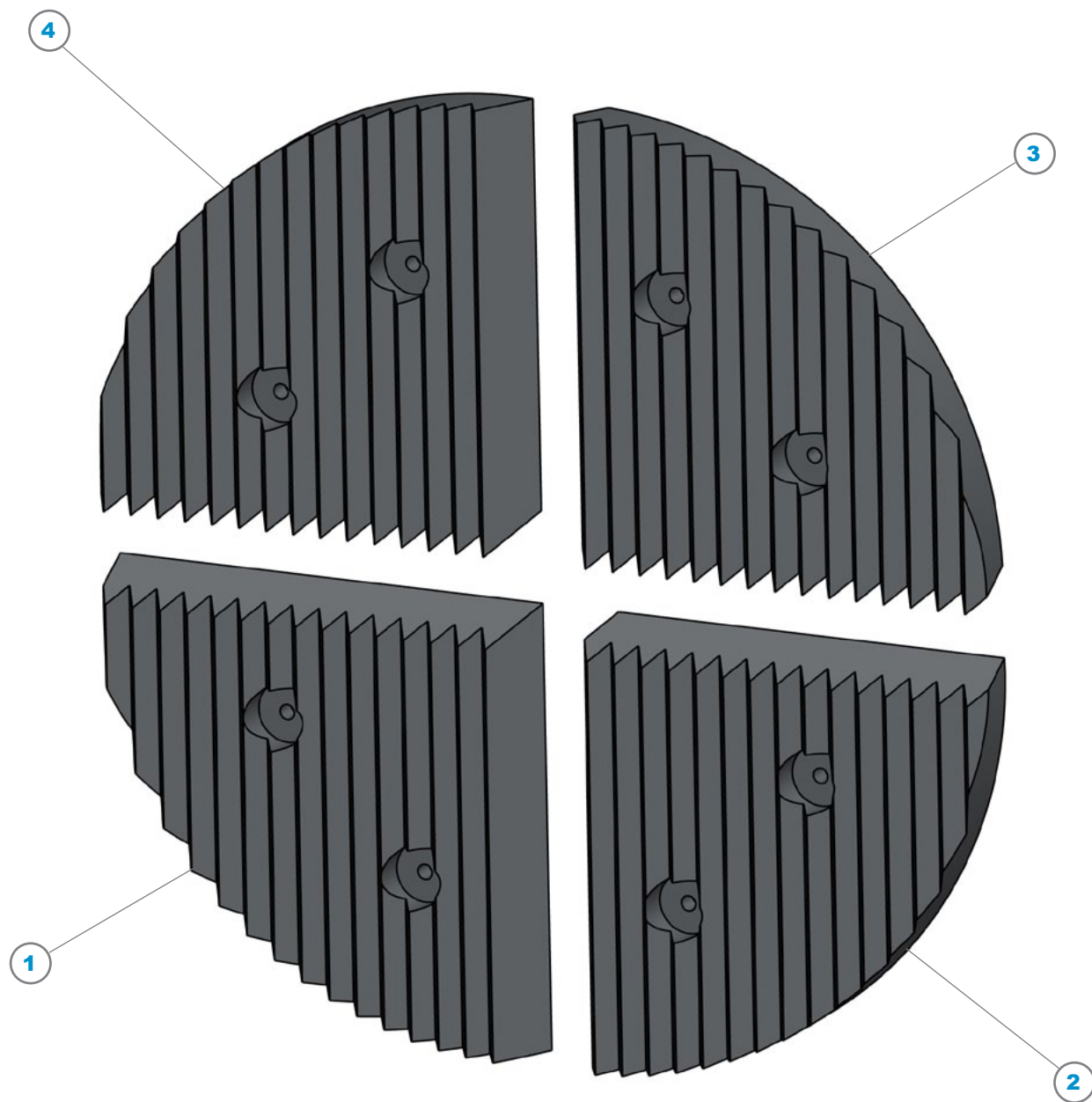
Electron Shower Components

View 3



ITEM	P/N	DESCRIPTION	QTY
1			
2			
3			
4			
5			
6			
7			
8			
9			
10			
11			
12			
13			
14			

Faraday Discs Components



ITEM	P/N	DESCRIPTION	QTY
1	99483	Strike Plate, Disc 1	1
2	99484	Strike Plate, Disc 2	1
3	99485	Strike Plate, Disc 3	1
4	99486	Strike Plate, Disc 4	1



End Station Components

ITEM	P/N	DESCRIPTION	QTY
1	99707		
2	99708		
3	99709		
4	99714		
5	99715		