



# GSD Flange & Liner Components

Floating Clamp Ring Setup



*Water and non-water cooled source flanges are available.*



512.259.0320  
800.621.9598



glemco.com  
sales@glemco.com



PO Box 217  
Leander, TX 78646

Glemco® - Any unauthorized use and or duplication of any material from this media without express and written permission from Glemco is strictly prohibited.

G-30-110GSD Rev 01

## 99196 | 99280A

### Water Cooled Source Liner & Flange



#### ALSO AVAILABLE

##### 99280PM

Flange, Pump Improvement Modification  
*Modification of customer provided flange to improve pumping.*

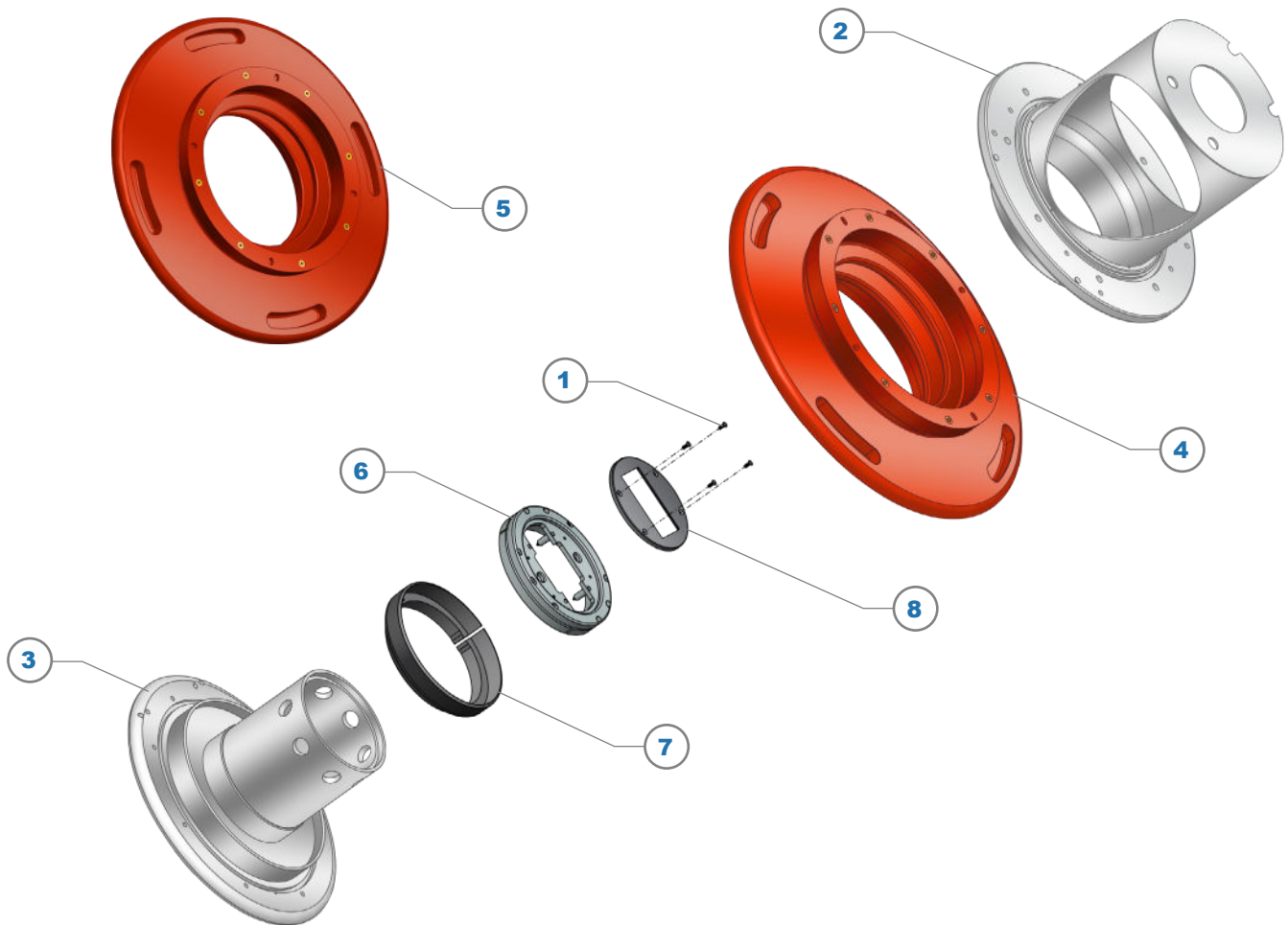
##### 99280R

Flange, Repair, Custom  
*Quote provided after evaluation of repair.*

ITEM	P/N	DESCRIPTION	QTY
1	8B330	8-32 x 7/16", SS, FHSS	4
2	99196	Liner	1
3	99280A	Flange, Floating Clamp, Shielded	1
4	99462	Source Collar	1
5	99463	Source Clamp Ring	1
6	99548	Source Shield	1
7	99636-WC	Bushing, Red	1
8	99636B-WC	Bushing, Tile Red	

# 99196A | 99280D

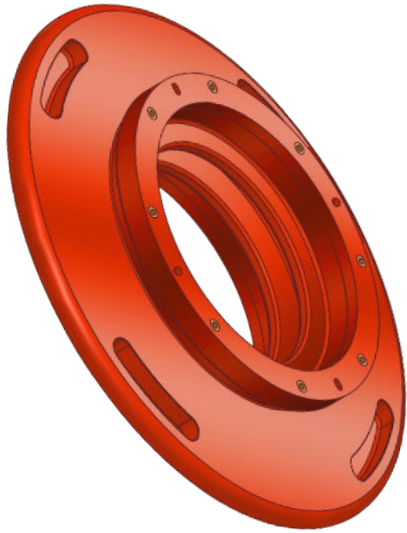
## Non-Water Cooled Source Liner & Flange



ITEM	P/N	DESCRIPTION	QTY
1	8B330	8-32 x 7/16", SS, FHSS	4
2	99196A	Liner	1
3	99280D	Flange, Floating Clamp, Shielded, Non-Water Cooled	1
4	99454B-WC	Bushing, Red	1
5	99454BB-WC	Bushing, Tile Red	
6	99462	Source Collar	1
7	99463	Source Clamp Ring	1
8	99548	Source Shield	1

## 99454B-WC | 99454BB-WC

### Bushing Options



99454B-WC  
Bushing, Red

RoHS Compliant, Track Resistant RS-2272, Non-Leaded, Shielded, not compatible with GSD HC. Track resistant filled epoxy resin specifically designed for high temperature, high voltage insulator applications. This material provides excellent electrical grade insulation properties and chemical resistance, and will not char when exposed to a high voltage arc. This updated bushing has improved durability over previous materials. Suitable for use in GSD HE and VHE implanters ONLY. Provided with crate.

99454BB-WC  
Bushing, Tile Red

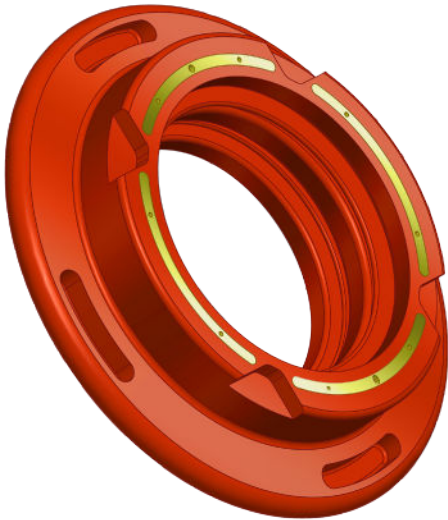
RoHS Compliant, Multi-Compound, Track Resistant I.D. with Shielded Epoxy Resin O.D., Red Multi-layer bushing with inner walls made of same track resistant material used in 99454B, with a special outer layer made of castable, lead free insulating grade, filled epoxy resin specifically designed for high voltage insulator applications requiring X-Ray shielding.

This material provides good electrical grade insulation properties, high mechanical properties, and superior arc resistance to any lead oxide filled epoxy. This material has equal x-ray shielding to a 25% lead oxide filled epoxy. This material is non-flammable and meets UL94V-0 requirements. This updated bushing has improved durability over previous materials. Provided with crate.



## 99636-WC | 99636B-WC

### Bushing Options



99636-WC  
Bushing, Red

RoHS Compliant, Track Resistant, Non-Leaded, Shielded. Track resistant filled epoxy resin specifically designed for high temperature, high voltage insulator applications. This material provides excellent electrical grade insulation properties and chemical resistance, and will not char when exposed to a high voltage arc. This updated bushing has improved durability over previous materials. Provided with crate.

99636B-WC  
Bushing, Tile Red

RoHS Compliant, with X-Ray Shielding, the only RoHS compliant bushing that is compatible with GSD HC (X-Ray Shielded). Multi-layer bushing with inner walls made of same track resistant material used in 99636, with a special outer layer made of castable, lead free insulating grade, filled epoxy resin specifically designed for high voltage insulator applications requiring X-Ray shielding. This material provides good electrical grade insulation properties, high mechanical properties, and superior arc resistance to any lead oxide filled epoxy. This material has equal x-ray shielding to a 25% lead oxide filled epoxy. This material is non-flammable and meets UL94V-0 requirements. This updated bushing has improved durability over previous materials. Provided with crate.

