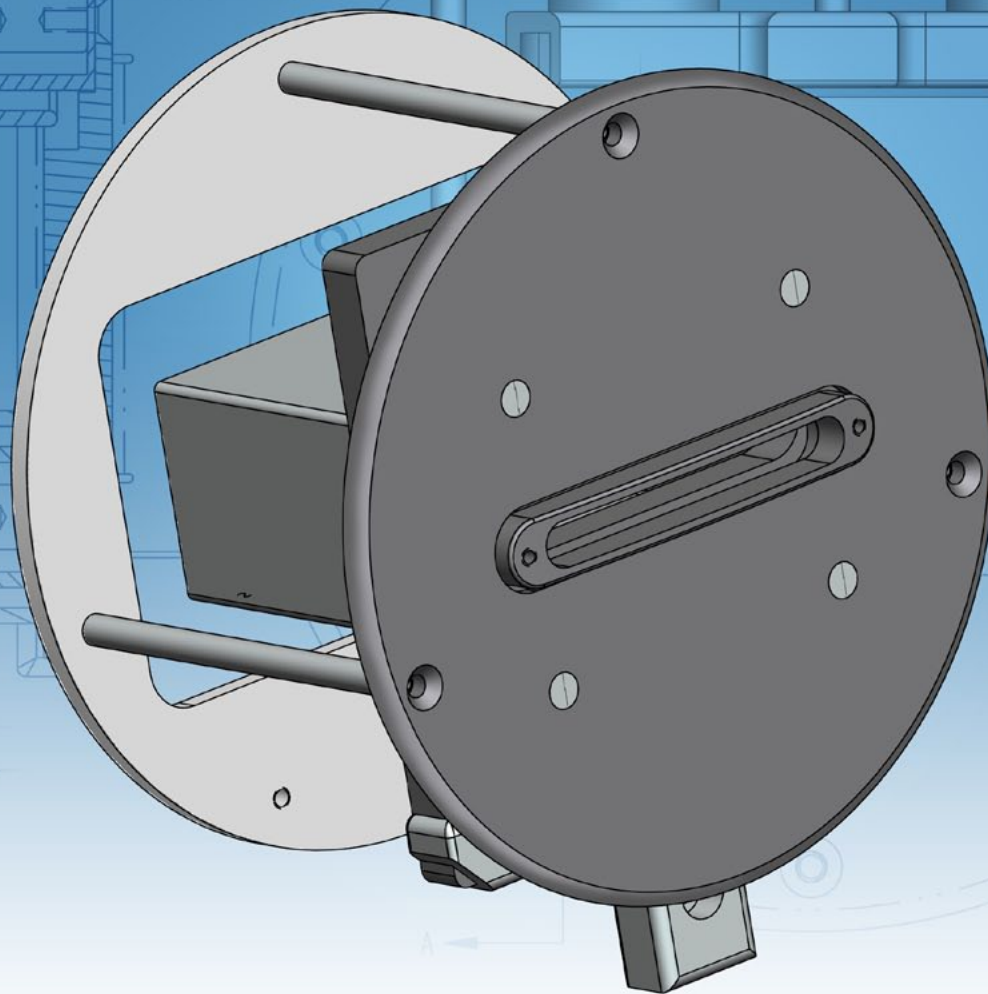




A Resource for Semiconductor Manufacturers



HE/VHE Extraction Electrode Upgrade for **GSD Implanter Systems**

Glemco enhances the HE/VHE Electrode Manipulator Head through construction that optimizes production and increases efficiency with these developments...

- **Enhanced Design**
Improved isolation of the suppression aperture.
- **Greater Protection**
Increased shielding of the power feed-through.
- **Better Productivity**
Reduced arcing and extended PM frequency.



A Resource for Semiconductor Manufacturers

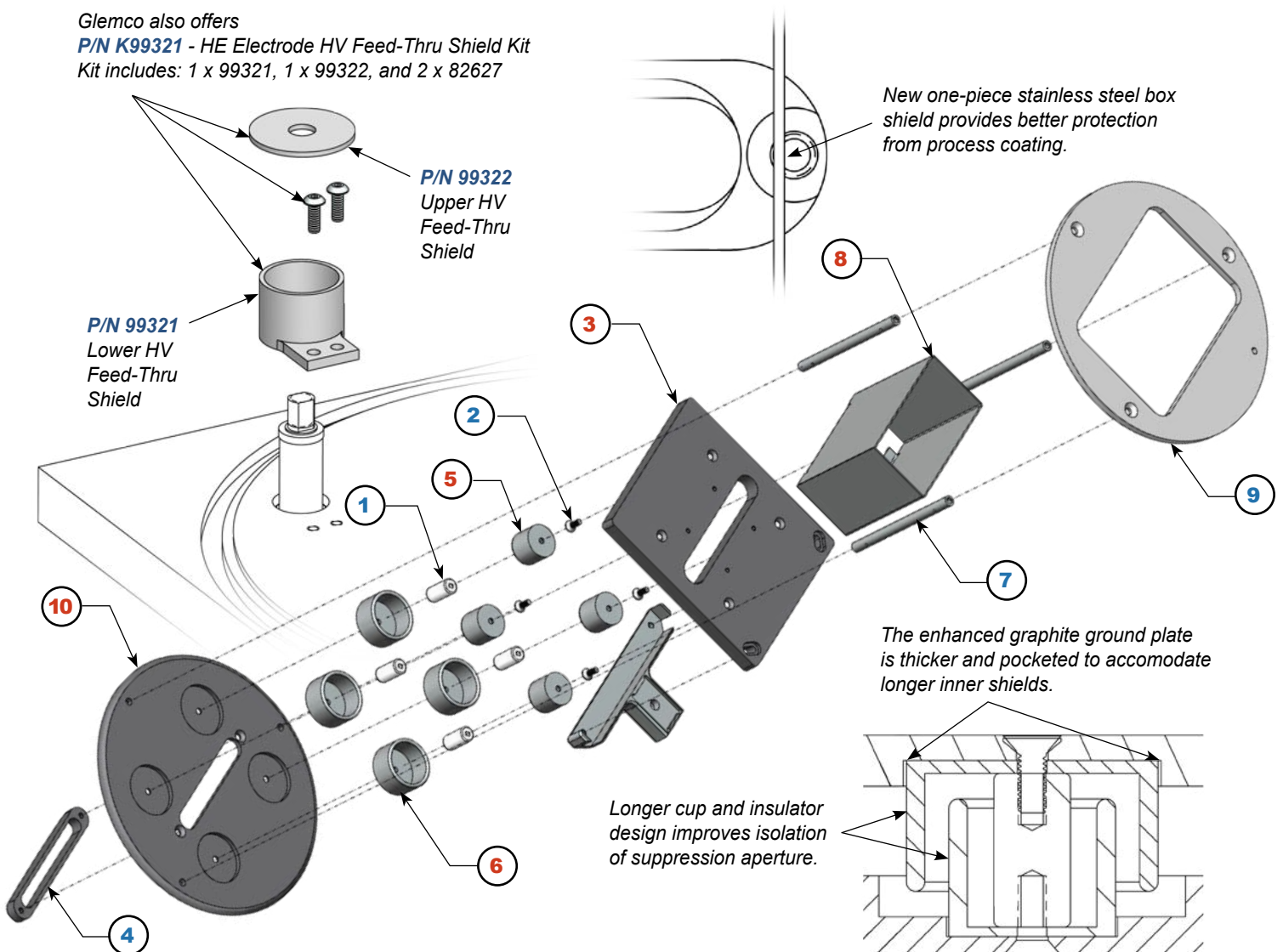
PO Box 217 Leander, TX USA 78646-0217 • 800-621-9598 • sales@glemco.com • www.glemco.com

HE/VHE Extraction Electrode Manipulator Head Components

Glemco also offers

P/N K99321 - HE Electrode HV Feed-Thru Shield Kit

Kit includes: 1 x 99321, 1 x 99322, and 2 x 82627



Item	P/N	Description	OEM	Qty
1	30680	Ceramic Standoff, 3/8" Dia X 3/4 Long	7230-0003-0014	4
2	8A166	FHS, 6-32 X 3/8 Slotted, SST	440084	6
3	99013C	Electrode Ground Plate, Graphite	17125571	1
4	99016	High Voltage Aperture	17037720	1
5	99138C	Small Cup, Extended	1711262	4
6	99139A	Large Cup, Extended	1711261	4
7	99140	Standoff	1712390	3
8	99141C	Shield, One Piece	No OEM Reference	1
9	99191	Back Flange	17037730	1
10	99586A	Aperture Plate	17125561	1

Contact us at sales@glemco.com Order online at www.glemco.com



A Resource for Semiconductor Manufacturers

PO Box 217 Leander, TX USA 78646-0217 • 800-621-9598 • sales@glemco.com • www.glemco.com