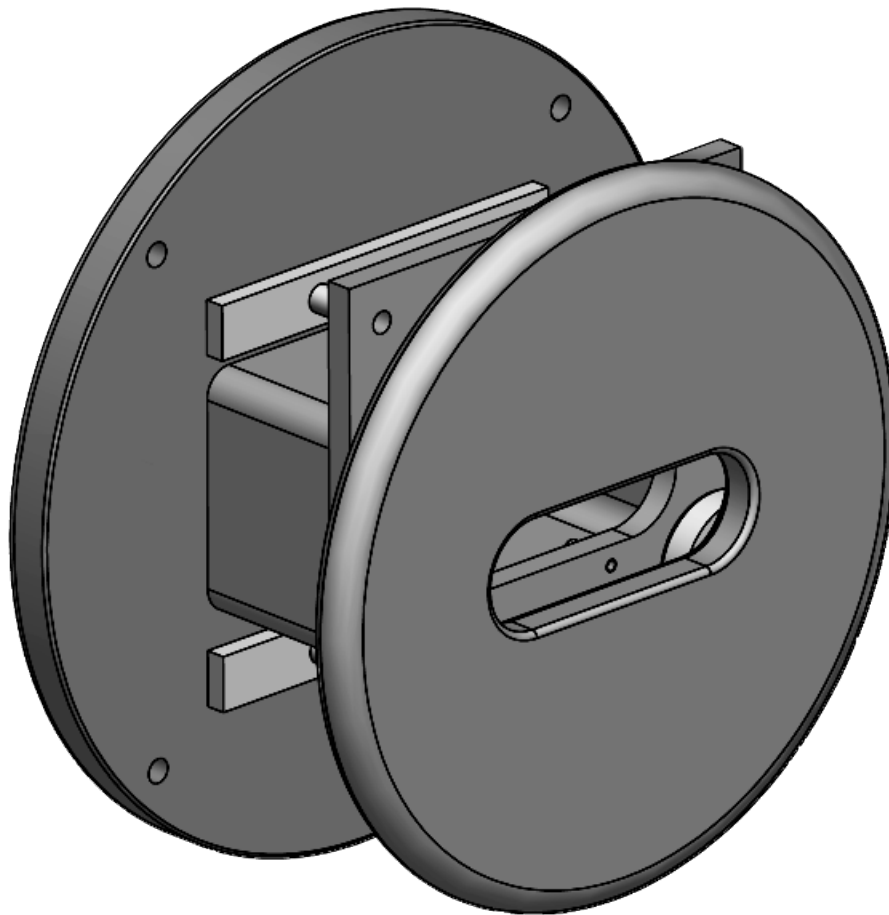


GSD High Current Post Accel

Extraction Electrode



512.259.0320
800.621.9598



glemco.com
sales@glemco.com

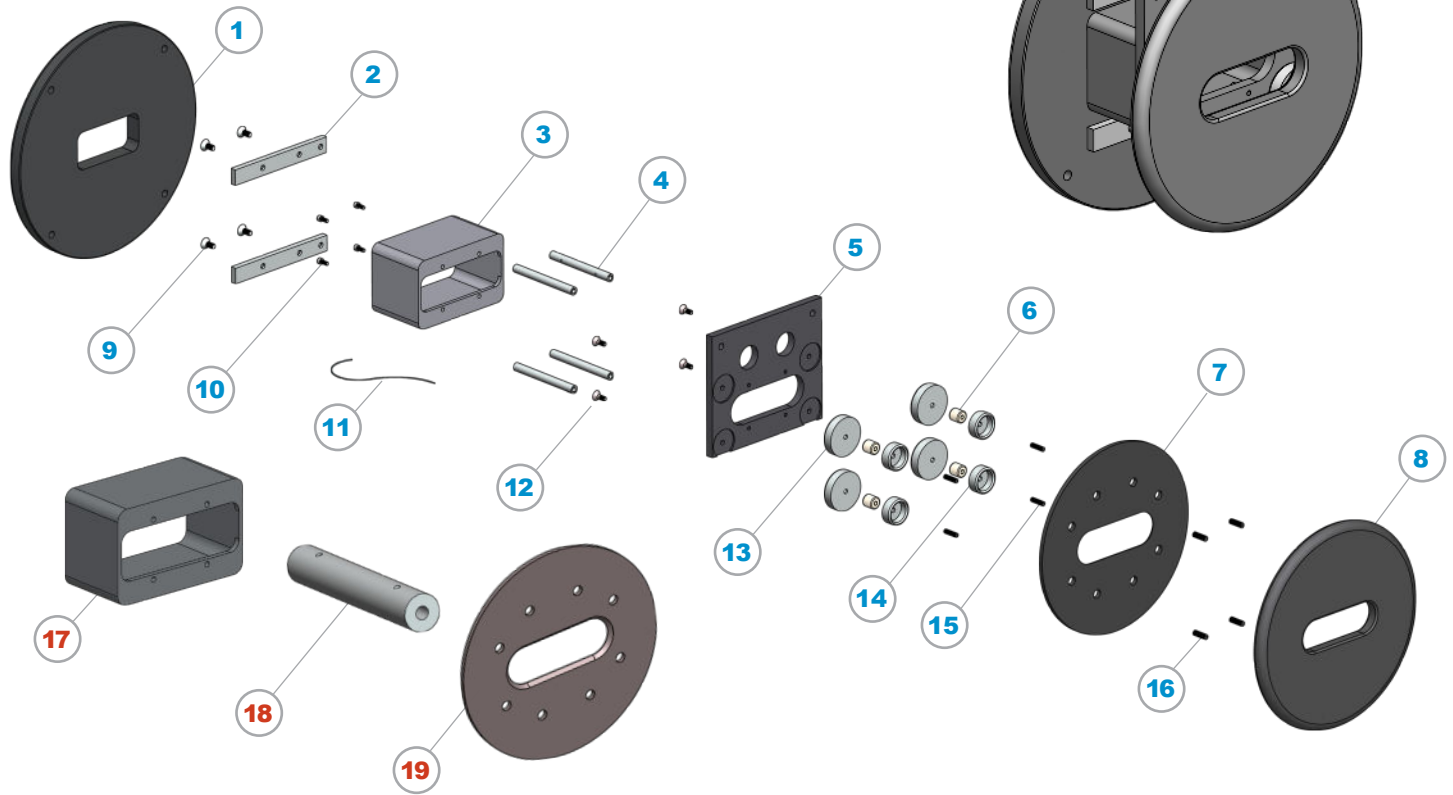


PO Box 217
Leander, TX 78646

Glemco® - Any unauthorized use and or duplication of any material from this media without express and written permission from Glemco is strictly prohibited.

G-30-150GSD Rev 01

HCPA Extraction Electrode



ITEM	P/N	DESCRIPTION	QTY
1	99807	Resolving Housing Aperture	1
2	99137	Bar, SS	2
3	99473	Aperture Block	1
4	99582	Electrode Standoff	4
5	99030C	Ground Electrode, Single Gas	1
6	99054	6-32 x 3/8" Ø x 3/8", Ceramic Standoff	4
7	40570A	Shield, Extraction Electrode	1
8	99181B	Extraction Aperture	1
9	8A217	8-32 x 3/8", SS, FHS-H	4
10	82385	4-40 x 1/4", SS, SHCS	4
11	82785	Ø.032" Electrical Safety Wire	1
12	82587	6-32 x 3/8", SS, FHS-H	4
13	99139	Large Cup, SS	4
14	99138	Small Cup, SS	4
15	82119	6-32 x 1/2", SS, Set Screw	4
16	8A387	8-32 x 1/2", SS, Vented, Set Screw	4
17	99473A	Aperture Block, Enhanced	
18	99582A	Electrode Standoff, Enhanced	
19	40570AW	Shield, Extraction Electrode, W	