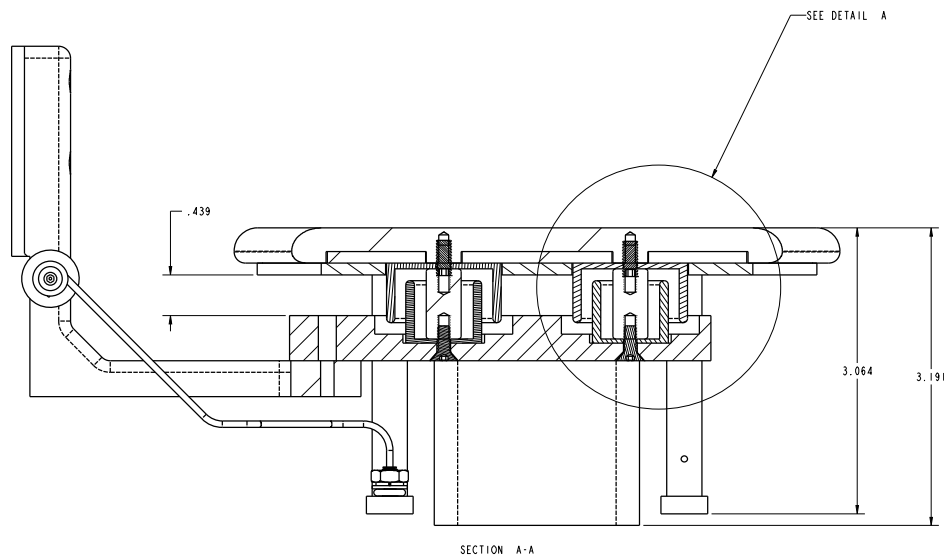
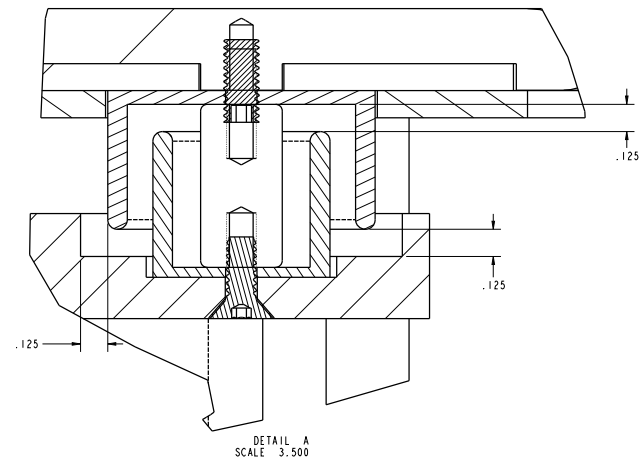
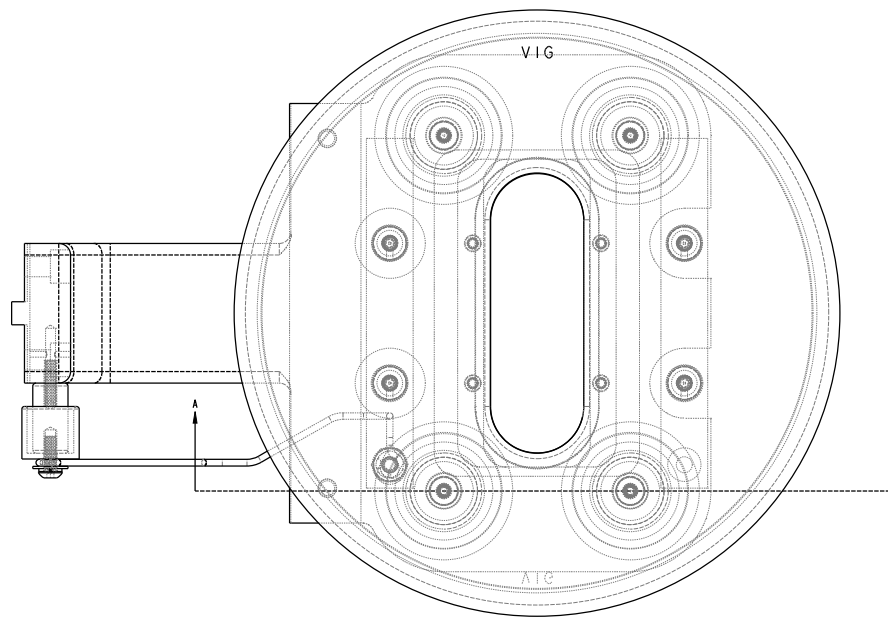



This document and the information presented within are considered the intellectual property of Glemco, Inc.

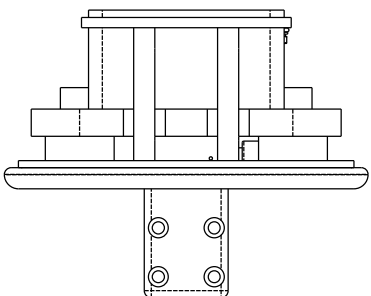
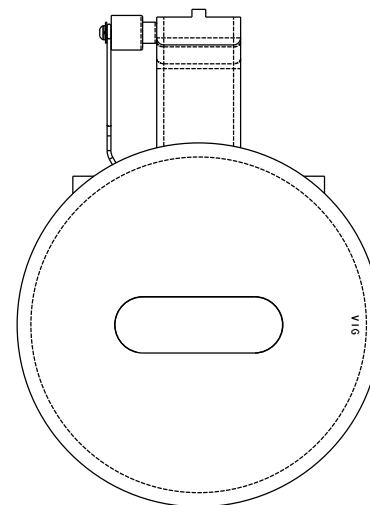
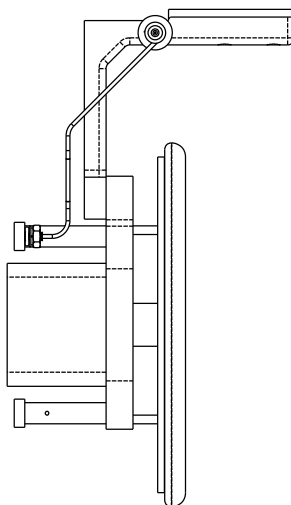
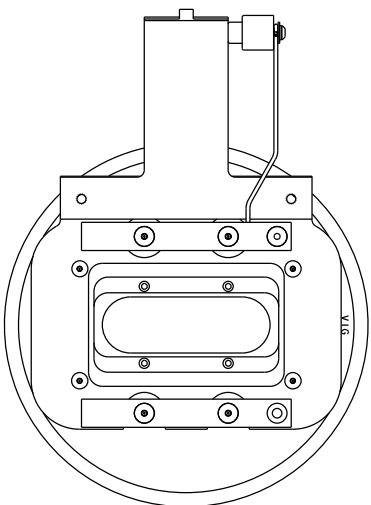
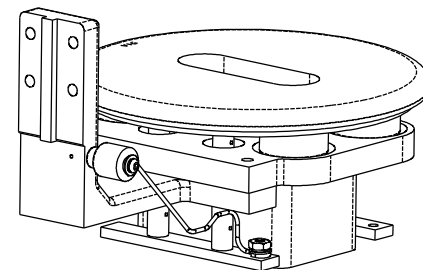
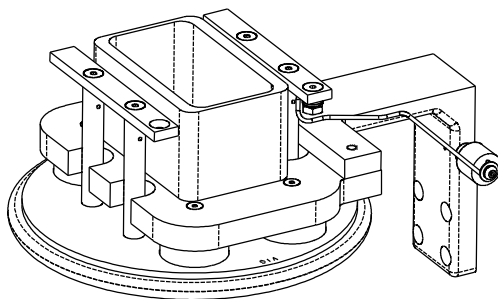
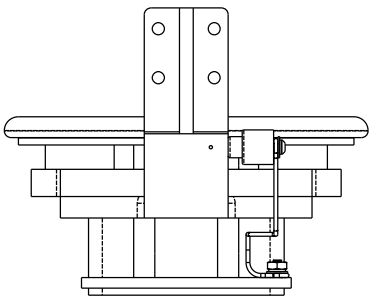


DESCRIPTION:  
HEAD, 2X ISOLATION, NO Pb  
ELECTRODE, POST ACCEL, GSD/Hc

98103  
D SCALE: 1.100 PAGE 1 OF 4



This document and the information presented within are considered the intellectual property of Glemco, Inc.			
DESCRIPTION:		98103	REV.
HEAD, 2X ISOLATION, NO Pb ELECTRODE, POST ACCEL, GSD/HC		D	SCALE: 1.500 PAGE 2 OF 4



This document and the information  
presented within are  
considered the intellectual  
property of Glemco, Inc.

DESCRIPTION:  
HEAD, 2X ISOLATION, NO Pb  
ELECTRODE, POST ACCEL, GSD/HC

**GLEMCO**

REV. NO. 98103

SCALE: 0.900 PAGE 3 OF 4

	12	11	9	8	7	6	5	4	3	2	1	
I												I
H												H
G												G
F												F
E												E
D												D
C												C
B												B
A												A

Part Number	Description	Total Qty
30680	6-32 x 3/8" Dia x 3/4", Ceramic Standoff	5
30710	Cup, Aluminum	1
82119	6-32 x 1/2", SS, Set Screw	1
82118	6-32 X 3/8, SS, Set Screw	4
82298	8-32 x 11/32" by 1/8", SS, Hex Nut	1
82385	4-40 x 1/4", SS, SHCS	4
82470	#6 x .025, SS, Washer, Flat	1
82474	#8 x .032, SS, Washer, Flat	1
82587	6-32 x 3/8", SS, FHSS	4
82589	8-32 x 1/2", SS, FHSS	1
82606	#6, .148" ID, .250 OD, SS, Washer, Split Lock	1
82609	#8, .174" ID, .293" OD, SS, Washer, Split Lock	1
99137	Bar, SS	2
99898	Mounting Bracket	1
99915	Suppression Wire, Ta	1
8A217	8-32 x 3/8", SS, FHSS	4
8A257	6-32 x 3/8", SS, Vented, BHSS	1
8A387	8-32 x 1/2", SS, Vented, Set Screw	4
99030D	Ground Electrode, Single Gas	1
99138C	Small Cup, SS, Enhanced	4
99139A	Large Cup, SS, Enhanced	4
99473A	Aperture Block, Enhanced	1
99582A	Electrode Standoff, Enhanced	4
99181D-1	Apature	1
99181D-2	Shield	1
99181D-3	Shield, Cover Plate	1

This document and the information presented within are considered the intellectual property of Glemco, Inc.

DESCRIPTION:

HEAD, 2X ISOLATION, NO Pb ELECTRODE, POST ACCEL, GSD/HC

98103

D


SCALE: 0.900

PAGE 4 OF 4

</

This document and the information presented within are considered the intellectual property of Glemco, Inc.

DESCRIPTION:  
HEAD, 2X ISOLATION, NO Pb  
ELECTRODE, POST ACCEL, GSD/HC



98103

D SCALE: 0.900 PAGE 4 OF 4