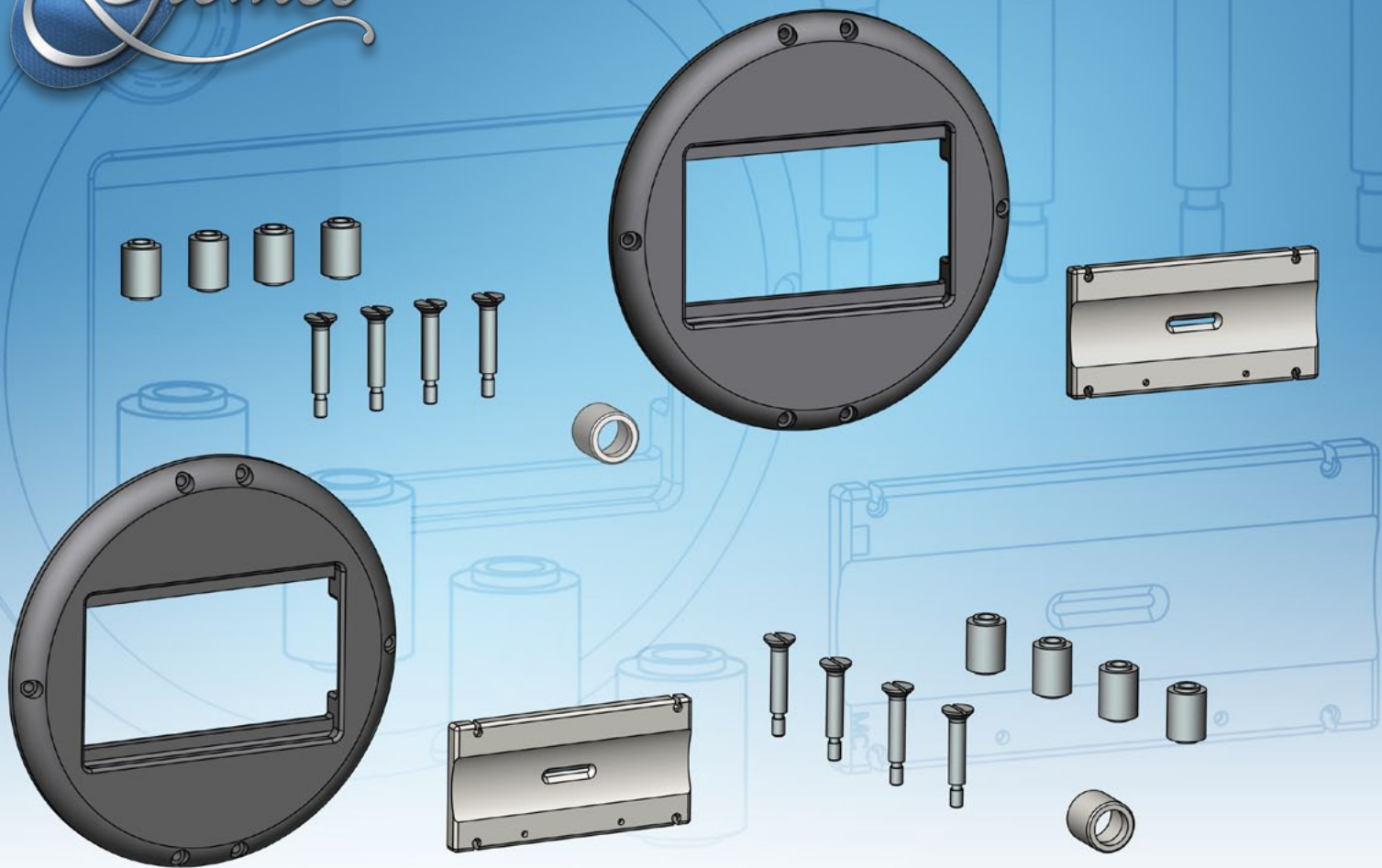




A Resource for Semiconductor Manufacturers



## 8250 Conversion Kits - K40549C & K40549D for **GSD Arc Chambers**

Glemco presents two retrofit kits for 8250 Source Bodies, that allow you to upgrade your legacy system to the GSD system with these advantages...

### ➤ **Extended Source Life**

*Through these configuration improvements:*

- 1. The cathode and filament are pinned to the arc chamber.*
- 2. The arc slit is pinned to the arc chamber.*
- 3. The rigid mounted arc chamber is bolted to the source body.*

### ➤ **Reduced Costs**

*Using common parts from the GSD platform, our kits require fewer parts which lowers operating costs.*

### ➤ **Complete Turnkey**

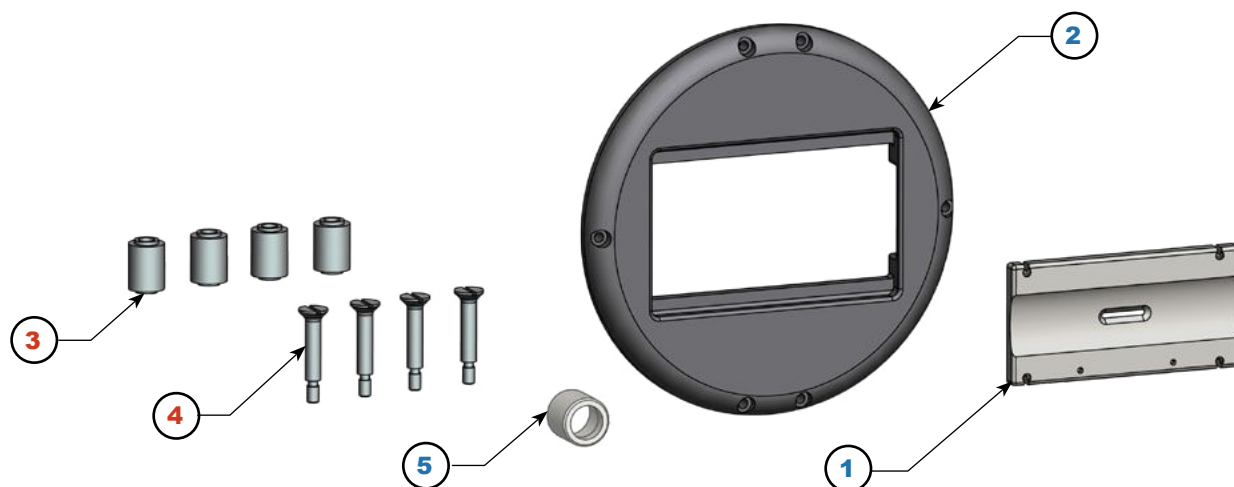
*Glemco's conversion upgrade kits require no modifications to the source body or housing.*



A Resource for Semiconductor Manufacturers

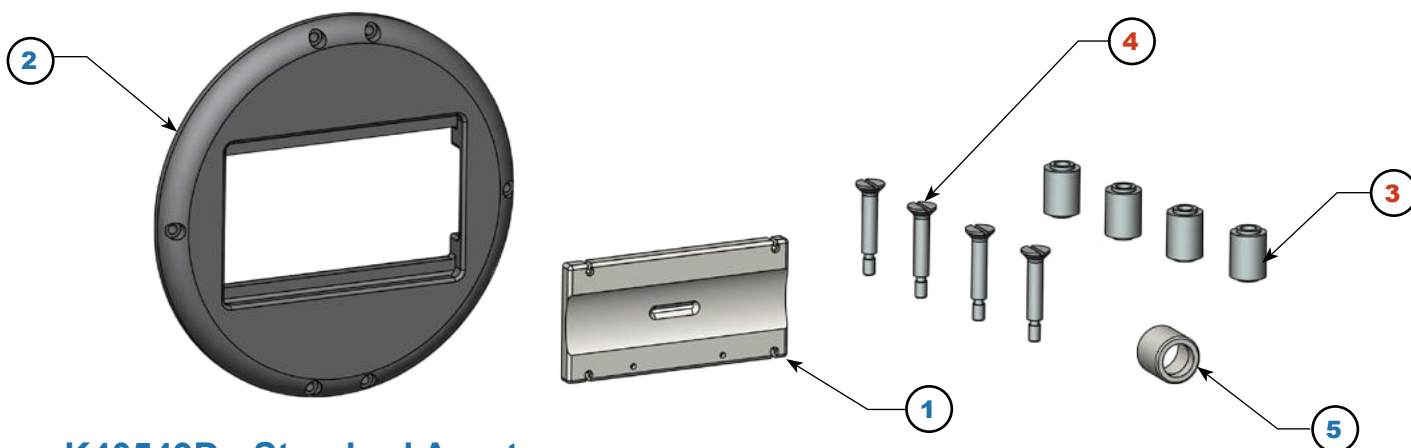
PO Box 217 Leander, TX USA 78646-0217 • 800-621-9598 • sales@glemco.com • www.glemco.com

# K40549C / K40549D - 8250 To GSD Conversion Kits



## K40549C - Beam Current Upgrade With Oversize Aperture

Item	P/N	Description	Qty
1	40549C	TOP PLATE ASSEMBLY	1
2	99154A	SHIELD, SOURCE PLATE	1
3	99293A	ARC CHAMBER STANDOFF, GLEMCO DESIGN	4
4	99338A	ARC CHAMBER MOUNTING SCREW, SHORT, MODIFIED, GLEMCO DESIGN	4
5	99409B	CATHODE REPELLER, MOLYBDENUM	1



## K40549D - Standard Aperture

Item	P/N	Description	Qty
1	40549D	TOP PLATE ASSEMBLY	1
2	99154A	SHIELD, SOURCE PLATE	1
3	99293A	ARC CHAMBER STANDOFF, GLEMCO DESIGN	4
4	99338A	ARC CHAMBER MOUNTING SCREW, SHORT, MODIFIED, GLEMCO DESIGN	4
5	99409B	CATHODE REPELLER, MOLYBDENUM	1

Contact us at [sales@glemco.com](mailto:sales@glemco.com) Order online at [www.glemco.com](http://www.glemco.com)



A Resource for Semiconductor Manufacturers

PO Box 217 Leander, TX USA 78646-0217 • 800-621-9598 • [sales@glemco.com](mailto:sales@glemco.com) • [www.glemco.com](http://www.glemco.com)