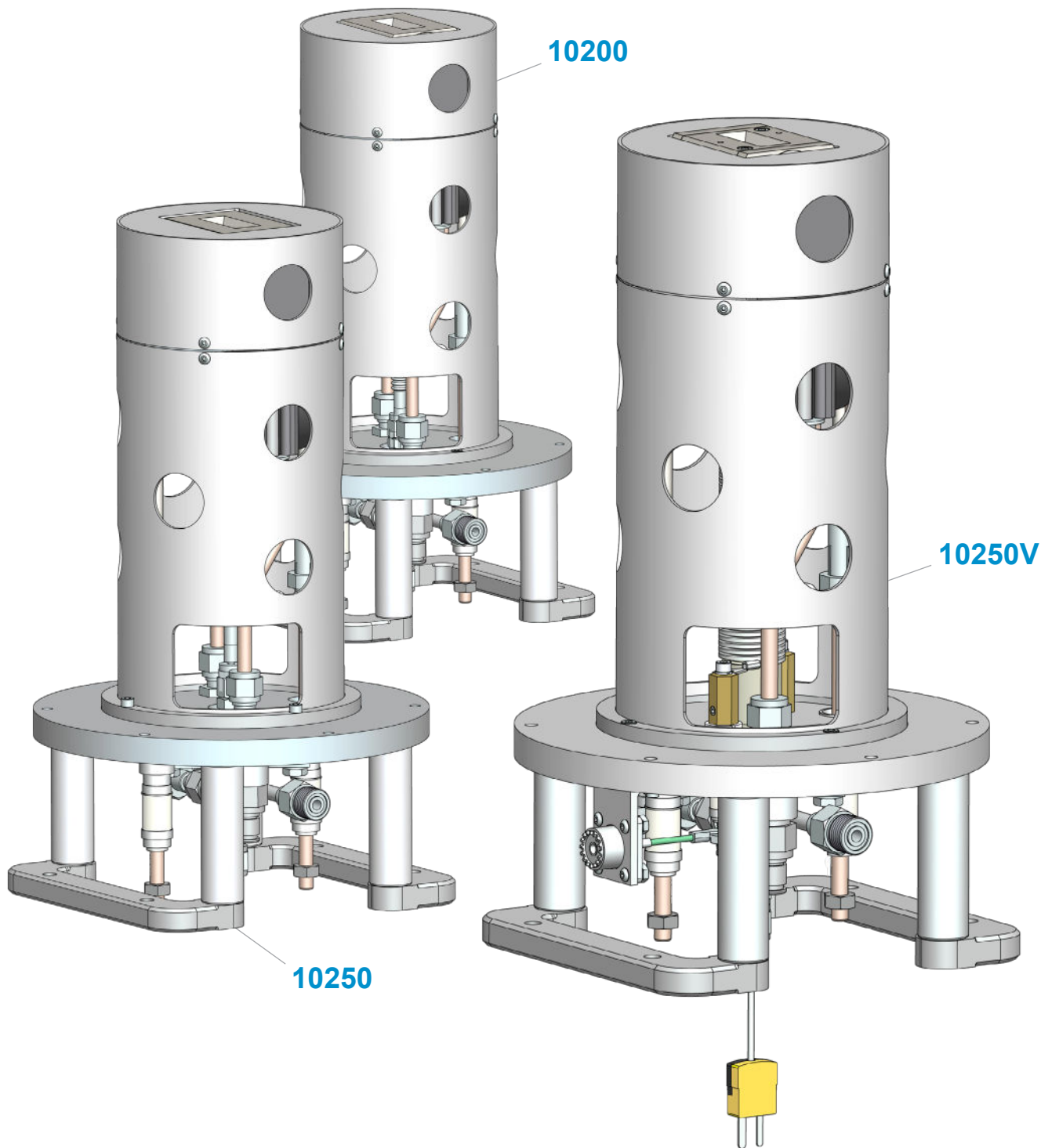


# 6200AV Sources

Vaporizer and Non-Vaporizer



512.259.0320  
800.621.9598



glemco.com  
sales@glemco.com



PO Box 217  
Leander, TX 78646

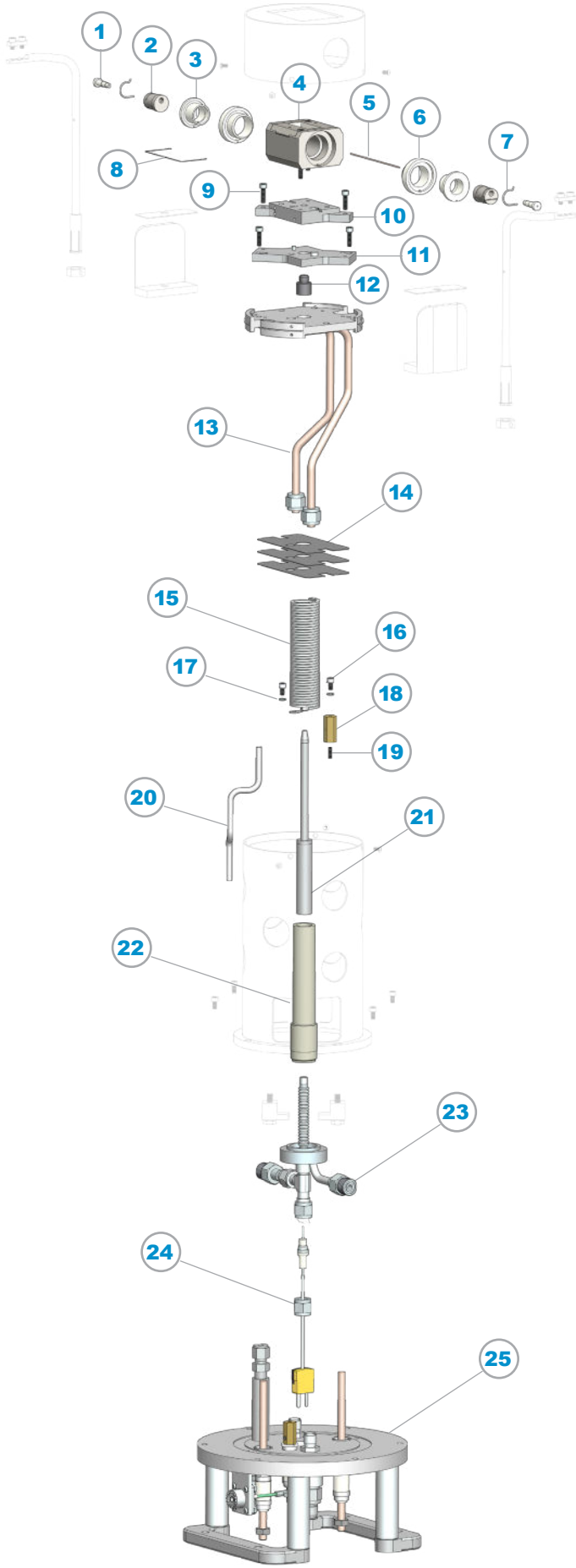
Glemco® - Any unauthorized use and or duplication of any material from this media without express and written permission from Glemco is strictly prohibited.

G-30-1006200 Rev 01



10250V - SKM Source Vaporizer Configuration

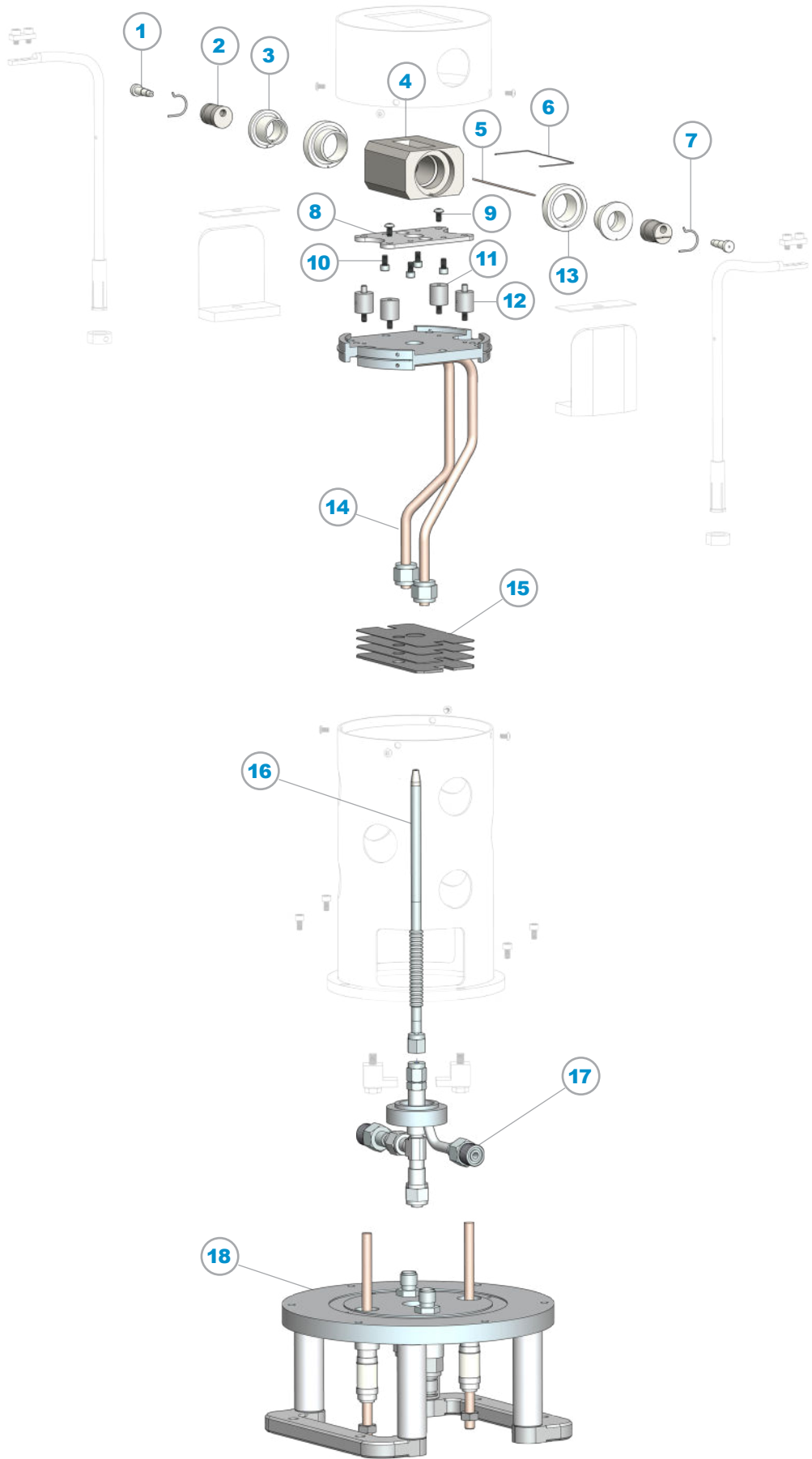
ITEM	P/N	DESCRIPTION	QTY
1	30120	Filament Insulator	2
2	30500	Filament Electrode	2
3	30140	Electrode Insulator, Inner	2
4	10650	Arc Chamber Assembly, 3pc	1
5	30565	Filament	1
6	30130	Electrode Insulator, Outer	2
7	30515	Retainer Clip, Tungsten	2
8	30505	Electrode Connector	1
9	82415	6-32 x 1/2", SS, SHCS	4
10	30105	#2 Mounting Stage, Dual Gas	1
11	30106A	#1 Mounting Stage, Modified	1
12	40800	Open Crucible Coupling	1
13	10609	Dual Gas Cooling Plate	1
14	10304	Magnet Shunt Set	3
15	10146	Vaporizer Heater Wire Assembly	1
16	82412	6-32 x 1/4", SS, SHCS	2
17	82606	#6, .148" ID x .250" OD, SS, Washer, Split, Lock	2
18	10623A-6	Stand-Off	1
19	82724	6-32 x 3/8", SS, Set Screw, Vented	1
20	10623A-5	Gas Feed Tube	1
21	40100	Vapor Source Crucible	1
22	10145	Vaporizer Tube	1
23	40115V	Gas Tube Manifold, Vaporizer Version	1
24	40116	Thermocouple Assembly	1
25	10611A	Flange Assy Threaded Terminals	1





10250 - SKM Source Non-Vaporizer Configuration

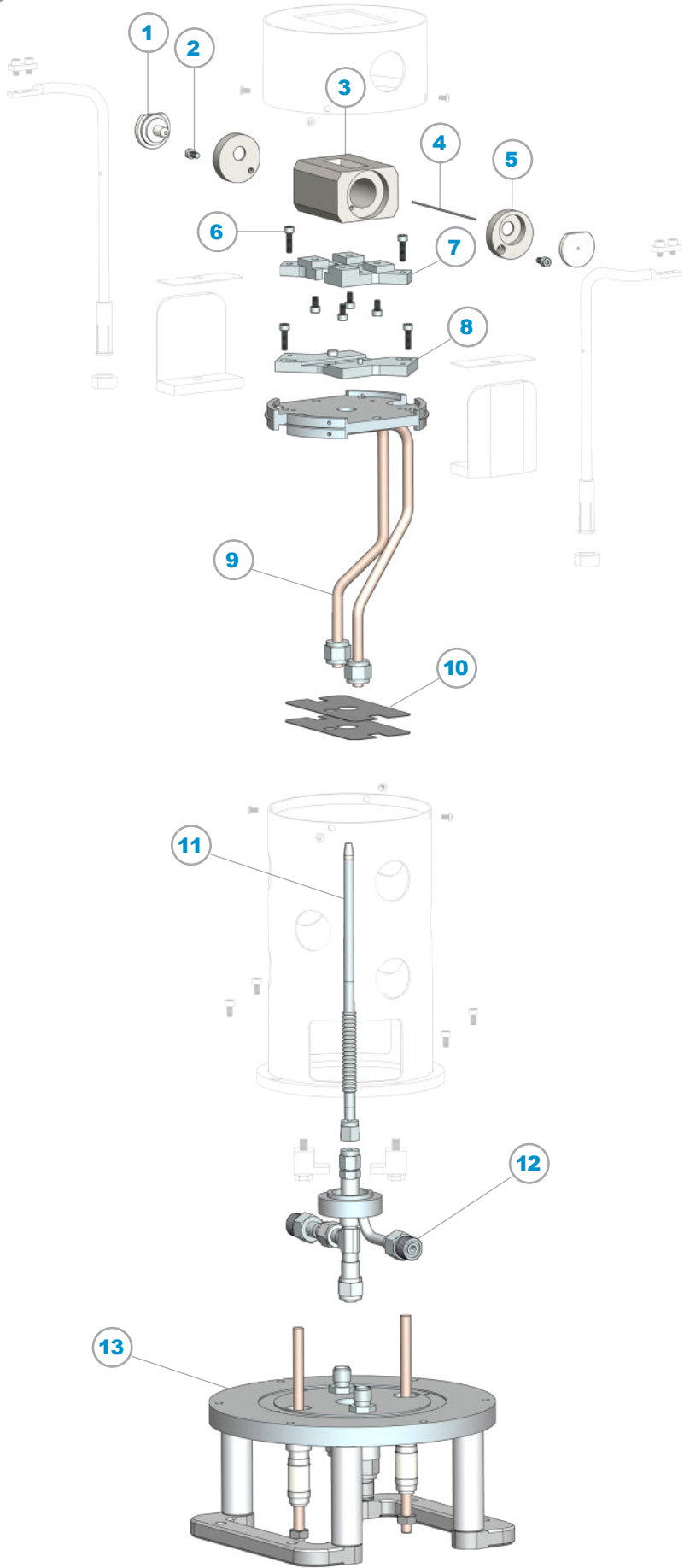
ITEM	P/N	DESCRIPTION	QTY
1	30120	Filament Insulator	2
2	30500	Filament Electrode	2
3	30140	Electrode Insulator, Inner	2
4	10110	Arc Chamber	1
5	30565	Filament	1
6	30505	Electrode Connector	1
7	30515	Retainer Clip, Tungsten	2
8	40836	Arc Chamber Mounting Plate	1
9	82625	6-32 x 1/4", SS, BHSS	2
10	82412	6-32 x 1/4", SS, SHCS	4
11	20501	Arc Chamber Spacer	2
12	20500	Arc Chamber Support	2
13	30130	Electrode Insulator, Outer	2
14	10610	Cooling Plate, Single Gas	1
15	10304	Magnet Shunt Set	4
16	40105	Gas Feed Tube	1
17	40115	Gas Tube Manifold	1
18	10611	Flange Assy Threaded Terminals	1





10200 - Standard Source Non-Vaporizer Configuration

ITEM	P/N	DESCRIPTION	QTY
1	30100	Filament Insulator	2
2	82412	6-32 x 1/4", SS, SHCS	6
3	10100	Arc Chamber	1
4	30550	Filament	1
5	20100	Arc Chamber Endcap	2
6	82415	6-32 x 1/2", SS, SHCS	4
7	30107	#2 Mounting Stage	1
8	30106	#1 Mounting Stage	1
9	10610	Cooling Plate, Single Gas	1
10	10304	Magnet Shunt Set	2
11	40105	Gas Feed Tube	1
12	40115	Gas Tube Manifold	1
13	10611	Flange Assy Threaded Terminals	1





Universal Source Components

ITEM	P/N	DESCRIPTION	QTY
1	10301	Corona Shield	1
2	82623	4-40 x 3/16", SS, BHSS	8
3	30210	Filament Clamp	2
4	30200	Filament Buss Assembly	2
5	10306	Copper Thermal Seal	2
6	10305	Magnet Pole	2
7	30220	Collar, Filament Buss	2
8	10307	Magnet	1
9	82486	.281 ID x .625 OD, SS, Washer, Flat	2
10	82447	1/4-20 x 2 1/2", SS, SHCS	2
11	40104	Vapor Source Clamp, Set	2
12	10300	Source Can	1
13	82412	6-32 x 1/4", SS, SHCS	4

